



WINDOWMAKER®
SOFTWARE

WINDOWMAKER 2025

Release Version: 25 R4.0.0

Date: 29/12/2025

CONTENTS

Upgrading from older versions.....	3
General Enhancements – Windowmaker	4
MIXABLE BY FRAME – COUPLING DESIGNS OF SAME TYPE.....	4
U-VALUE CALCULATIONS – THERMAL PERFORMANCE ANALYSIS	5
OPTIONS	7
PART MATRICES	8
General Enhancements – Windowmaker Web	8
MIX GLAZING SPECIFICATION	8
GLOBAL CHANGES.....	8
RECALCULATE.....	9
BAYS & BOWS.....	9
PART SALES LINE	9
Enhancement to Options - Windowmaker.....	9
DEALER CLIENT - ENHANCED DEALER HANDLING OF GLASS.....	9
PROPERTY TYPES.....	11
LINK TO SAW.....	11
LINK TO WORKING CENTRE	11
LINK TO WELDER.....	11
LINK TO GLASS CUTTING TABLE	11
Issues Fixed	11
Database Schema Changes.....	13

UPGRADING FROM OLDER VERSIONS

When upgrading, please also refer to the following documents for changes since your current version:

If your current version is	What's New	Release Notes
Windowmaker 2025 (v25.x)	https://windowmaker.com/public/en/pdf/windowmaker-2025-rx-release-document.pdf	
Windowmaker 2024 (v12.x)	https://windowmaker.com/en/pdf/windowmaker-2024-r12.x-release-document.pdf	
Windowmaker 2023 (v11.x)	https://windowmaker.com/en/pdf/windowmaker-2023-r11.x-release-document.pdf	
Windowmaker 2022 (v10.x)	https://windowmaker.com/en/pdf/windowmaker-2022-r10.x-release-document.pdf	
Windowmaker 2021 (v9.x)	https://windowmaker.com/en/pdf/windowmaker-2021-r9.x-release-document.pdf	
Windowmaker 2020 (v8.x)	https://windowmaker.com/en/pdf/windowmaker-2020-r8.x-release-document.pdf	
Windowmaker 2018 (v7.x)	www.windowmaker.com/en/pdf/Windowmaker%202018%20(v7.x)%20What's%20New.pdf	www.windowmaker.com/en/pdf/Windowmaker%202018%20(v7.x)%20Release%20Notes.pdf
Windowmaker 2012 (v6.x)	www.windowmaker.com/en/pdf/Windowmaker%202012%20(v6.x)%20What's%20New.pdf	www.windowmaker.com/en/pdf/Windowmaker%202012%20(v6.x)%20Release%20Notes.pdf

You may also refer:

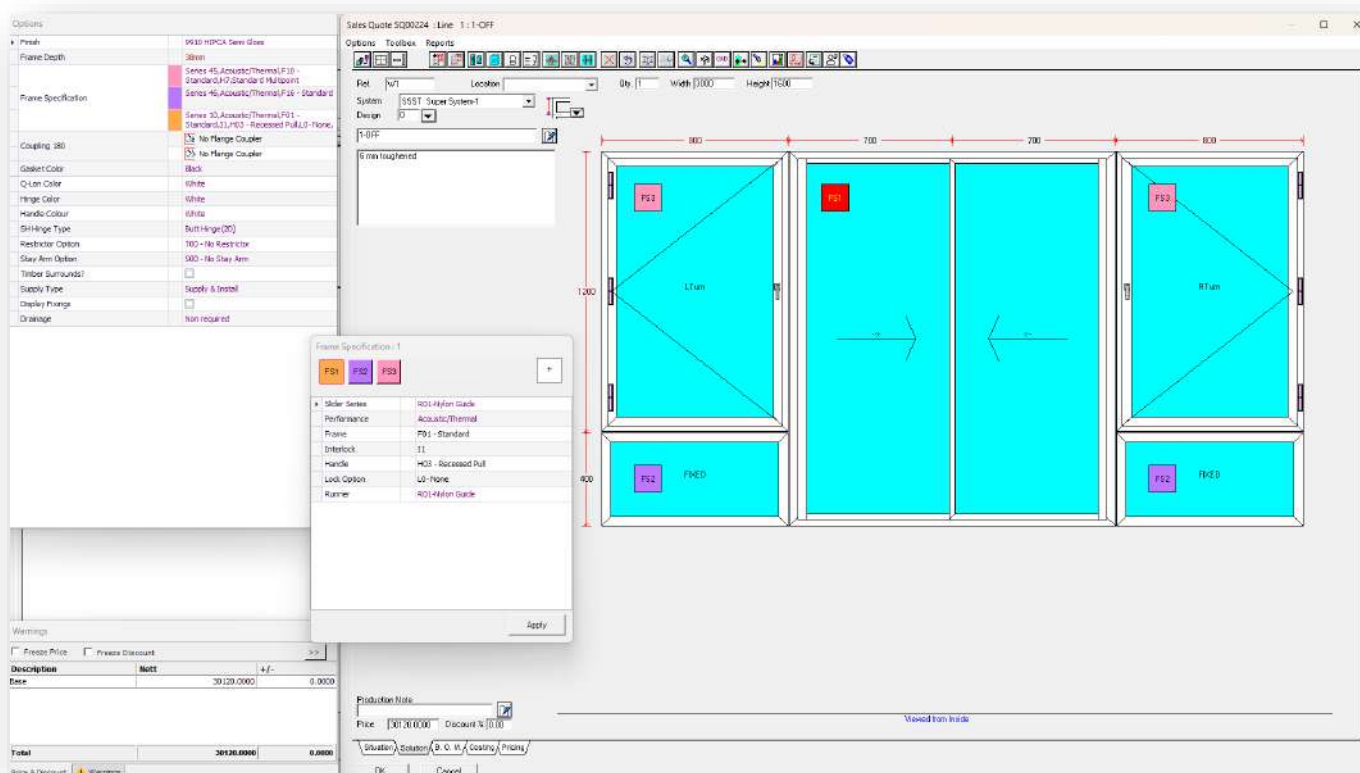
Windowmaker Technical Requirements	https://windowmaker.com/en/pdf/windowmaker-technical-requirements.pdf
------------------------------------	---

GENERAL ENHANCEMENTS – WINDOWMAKER

MIXABLE BY FRAME – COUPLING DESIGNS OF SAME TYPE

Introducing the ability to couple two or more designs of the same type but from different series (e.g., two casement windows from different series or two slider designs). It simplifies configuration, reduces redundant data setup, and improves usability for sales teams through intuitive configuration using Frame Specifications.

Frames can be selected directly on the Solution Page to apply or modify frame-level entities such as Designs or Option-Answers. Users can update option answers for one or multiple frames within the Frame Specification dialog or apply an existing specification to other frames using the Apply button. Frame Specification numbers (e.g., FS1, FS2, FS3) are now displayed on the top-left corner of each frame. This provides clear identification of specifications applied to individual frames.



To activate this functionality, enable the following settings:

- System – Super System**
 Added to the System Header page (Design systems). Marks the system as a combination system, allowing Frame Specifications per frame.
- Option – Mixable by Frame**
 Added to the Option Setup screen. Allows different answers per frame within a coupled design, enabling flexible and accurate frame-level configuration.

Report Enhancements

Quotation, Order Acknowledgement and Production Document are updated to display Frame Specification descriptions, ensuring consistent and detailed output for both sales and manufacturing teams.

Note: Custom reports require modification to display Frame Specification descriptions. Ensure that these are updated as required before using this functionality.

Super Quality Windows
17 Brighton Road,
Surrey, Surrey,
KT8 5LR, UK

Quotation

To: **Ardmore Hotels & Commercial Ltd**
6 Wharf Studios
28 Wharf Road
London
N1 7GR

Deliver to: **6 Wharf Studios**
28 Wharf Road
London
N1 7GR

Quote No.: **SQ00225**

Customer Ref.: **NT 7GR**

Quote Date: **12/23/2025**

Dear Michael,
Thank you for giving my company the opportunity to provide you with the following quotation for your perusal.
Should you require any further information, please feel free to contact me at the above number.

Sales Line	Details	Qty	Rate	Amount
0001	<p>W1</p> <p>Super System-1</p> <p>(D1) SHC-L (D2) Casement F (D3) 2T XIX_ 2HS as long (D4) SHC-R (D5) Casement F</p> <p>3000w x 1600h 6 mm toughened Finish: 9910 Semi Gloss Frame Depth: 38mm</p> <p>FS1 (D3) Slider Series: Series A Performance: Acoustic/Thermal Frame: Standard Frame Handle: Recessed Finger Pull Runner: Nylon Guide</p> <p>FS2 (D2, D5) Hinged Series: Series B Performance: Acoustic/Thermal Frame: Non-Standard Frame</p> <p>FS3 (D1, D4) Hinged Series: Series C Performance: Acoustic/Thermal Frame: Standard Frame Handle Option: Non Locking Handle Lock Option: Standard Multipoint</p> <p>Coupling 180 No Flange Coupler</p> <p>Gasket Color: Black</p>	1	1115.4019	1115.4019

Super Quality Windows

Production Document

12/23/2025

SQ00225 / 0001

ARD001 Ardmore Hotels & Commercial Ltd

Qty 1

W1

System: SSST Super System-1

Design: (D1) SHC-L
(D2) Casement F
(D3) 2T XIX_ 2HS as long
(D4) SHC-R
(D5) Casement F

Size: 3000w x 1600h

Glazing: 6 mm toughened

Finish: 9910 Semi Gloss

Frame Depth: 38mm

FS1 (D3)
Slider Series: Series A
Performance: Acoustic/Thermal
Frame: Standard Frame
Handle: Recessed Finger Pull
Runner: Nylon Guide

FS2 (D2, D5)
Hinged Series: Series B
Performance: Acoustic/Thermal
Frame: Non-Standard Frame

FS3 (D1, D4)
Hinged Series: Series C
Performance: Acoustic/Thermal
Frame: Standard Frame
Handle Option: Non Locking Handle
Lock Option: Standard Multipoint

Coupling 180
No Flange Coupler

Gasket Color: Black

Q-Loon Color: White

Hinge Color: White

Handle Colour: White

SH Hinge Type: Butt Hinge (2D)

Restrictor Option: 100 - No Restrictor

Stay Arm Option: 800 - No Stay Arm

Timber Surrounds?: No

Supply Type: Supply & Install

Display Fixings: No

Drainage: Non required

U-VALUE CALCULATIONS – THERMAL PERFORMANCE ANALYSIS

Enhancing Windowmaker's existing U-value calculation capability to comply with EN ISO 10077-2 standards. It improves the accuracy of thermal transmittance (U-value) calculations for windows and doors by considering detailed profiles, glazing, and spacer data.

New U-Value Calculation Report has been introduced, providing:

- U-value per frame and per design
- Summary for multi-frame and multi-facet designs
- Overall U-value (U_{quote}) for the entire Sales Quote

Super Quality Windows
17 Brighton Road,
Surrey, Surrey,
KT8 5LR,
UK
UK
+912 345 3456
super.quality@gmail.com

Quote No.: 00000005

Customer: Holly Kent

00000005 Window U-Value: 1.2829

[DISCLAIMER](#)

Line No.	Reference	Location	Description	System	Size	Aw	Uw	Uw * Aw
0001	W1	Living Room	Casement F.R	Logik Internally Glazed system	1230 x 1480	1.8204	1.3391	2.4377
0002	W2	Living Room	Casement F.R	Logik Internally Glazed system	1230 x 1480	1.8204	1.3391	2.4377
0003	W3	Dining Room	Casement F.R	Logik Internally Glazed system	1230 x 1480	1.8204	1.2571	2.252
0004	W4	Living Room	Casement F.R	Logik Internally Glazed system	1230 x 1480	1.8204	1.2571	2.252
0005	W5	Bedroom 4	Casement F.R	Logik Internally Glazed system	1230 x 1480	1.8204	1.3391	2.4377
0006	W6	Toilet	Casement F.R	Logik Internally Glazed system	1230 x 1480	1.8204	1.3391	2.4377
0007	W7	Kitchen	Casement F.R	Logik Internally Glazed system	1230 x 1480	1.8204	1.2571	2.252
0008	W8	Living Room	Casement F.R	Logik Internally Glazed system	1230 x 1480	1.8204	1.2571	2.252
0009	W9	Hall	Casement F.R	Logik Internally Glazed system	1230 x 1480	1.8204	1.3288	2.4189
0010	W10	Hall	Casement F.R	Logik Internally Glazed system	1230 x 1480	1.8204	1.3288	2.4189
0011	W11	Kitchen	Casement F.R	Logik Internally Glazed system	1230 x 1480	1.8204	1.2268	2.2333
0012	W12	Bathroom	Casement F.R	Logik Internally Glazed system	1230 x 1480	1.8204	1.2268	2.2333
0013	W13	Stairs	Casement F.R	Logik Internally Glazed system	1230 x 1480	1.8204	1.3288	2.4189
0014	W14	Living Room	Casement F.R	Logik Internally Glazed system	1230 x 1480	1.8204	1.3288	2.4189
0015	W15	Bedroom 5	Casement F.R	Logik Internally Glazed system	1230 x 1480	1.8204	1.2268	2.2333
0016	W16	Bedroom 5	Casement F.R	Logik Internally Glazed system	1230 x 1480	1.8204	1.2268	2.2333
						29.126		37.3676

DISCLAIMER:
The U-value calculations provided by this application are for informational purposes only and are based on standard formulas, assumptions, and input data supplied by the user. While every effort has been made to ensure accuracy, results may not fully reflect actual product performance or site-specific conditions.
Windowmaker Software Ltd accepts no responsibility or liability for any errors, omissions, or discrepancies in the calculated values, nor for any decisions, actions, or outcomes arising from their use. For compliance, certification, or design-critical purposes, users should seek verification from qualified professionals and refer to official testing or regulatory standards.

Summary 0001 0002 0003 0004 0005 0006 0007 0008 0009 0010 0011 ...

- U-value (U_{Window}) of Window

Summary											
Frame	Sash 1	Transom	Sash 2	Bead	Position	Length	Section Width	Af	Uf	Uf * Af	Cutlet ID
60mm				EWS7301W	F^A1	615	60	0.034	1.1	0.0374	533
60mm	75mm+EWS800P			EWS7301W	F^B1	615	107	0.0557	1.2	0.0668	677
60mm				EWS7301W	F_A2	615	60	0.034	1.1	0.0374	533
60mm	75mm+EWS800P			EWS7301W	F_B2	615	107	0.0557	1.2	0.0668	677
60mm				EWS7301W	F<A1	1480	60	0.0852	1.1	0.0937	533
	75mm+EWS800P	70mm+EWS801P		EWS7301W	F B1	1480	117	0.1623	1.3	0.211	394
60mm	75mm+EWS800P			EWS7301W	F>C1	1480	107	0.1469	1.2	0.1763	677
								0.5738	0.6894		
Glazing											
4-20-4 Pilkington OptiFloat+KS Argon SwissSpacer	Position	Size	Sightline Size	Ag	Ug	Ug * Ag					
G.A1	G.A1	550x1390	520x1360	0.7072	1.219	0.8621					
4-20-4 Pilkington OptiFloat+KS Argon SwissSpacer	G.B1	456x1296	426x1266	0.5393	1.219	0.6574					
				1.2465	1.5195						
Spacer											
SwissSpacer	Position	Sightline Perimeter(L)	Ψ	L * Ψ							
G.A1		3.76	0.032	0.1203							
G.B1		3.384	0.032	0.1083							
		7.144		0.2286							
Window U-Value=											
1.3391 1.3											

< >

Summary

0001

0002

0003

0004

0005

0006

0007

0008

0009

0010

0011

0012

...

+

:

◀

To activate this functionality, ensure the following data-setup are met:

- Profile Cutlet Data: Define U-values (U_i) for all profile cutlets, including frames, sashes, beads, mullions and couplers.

	A	B	C	D	E	F	G	H	I
1	ID	Profile Cutlet Type	Frame	Sash1	Sash2	Bead1	Bead2	Sightline Width	U-Value
2	758	Frame+Sash	3576: 60mm+EWS7521A	4001: 75mm+EWS507A		465: EWS7303*#	107	1.6757	
3	757	Frame+Sash	3576: 60mm+EWS7521A	4003: 75mm+EWS7607S		465: EWS7303*#	107	1.6696	
4	756	Frame+Sash	3593: 60mm+EWS7621S	4001: 75mm+EWS507A		465: EWS7303*#	107	1.6523	
5	755	Frame+Sash	3593: 60mm+EWS7621S	4003: 75mm+EWS7607S		465: EWS7303*#	107	1.6447	
6	754	Frame+Sash	3580: 50mm+R25	4001: 75mm+EWS507A		465: EWS7303*#	107	1.452	
7	753	Frame+Sash	3580: 50mm+R25	4003: 75mm+EWS7607S		465: EWS7303*#	107	1.4407	
8	752	Frame+Sash	3576: 60mm+EWS7521A	4001: 75mm+EWS507A		467: EWS7301*#	107	1.715	
9	751	Frame+Sash	3576: 60mm+EWS7521A	4003: 75mm+EWS7607S		467: EWS7301*#	107	1.709	

- Using Export Updates generate a single Excel Workbook containing sheets for all profile cutlets of a module/eCatalog:
 - Profile Cutlet – All Profile Cutlets will be listed
 - Coupler – All Couplers will be listed
- When the workbook is ready, import it into Windowmaker. Profile Cutlet details can also be edited from the Profile Cutlet tab.
- Glazing Data: Assign glass U-values (U_g) for each glazing record.

Glazing: 434 : 4-12-4-12-4 Pilkington KS

Header	Configuration	Attributes	Limits
Weight		45.00	
U-value		0.7630	
G-value		0.0000	
dB		0.0	
Wastage %		0.00	

- Spacer Data: Populate Ψ -value matrices (Psi-values) for spacers by material and glazing type.

Spacer Type Attributes

Linear Thermal Transmittance (Ψ -value - W/m²K)

Drag a column header here to group by that column

Material Type	Double Glazed	Double Glazed Laminated	Double Glazed Low E	Double Glazed Laminated Low E	Triple Glazed	Triple Glazed Laminated	Triple Glazed Low E	Triple Glazed Laminated Low E	Quadruple Glazed	Quadruple Glazed Laminated	Quadruple Glazed Low E	Quadruple Glazed Laminated Low E
PVC-U	0.032	0.032	0.032	0.032	0.03	0.03	0.03	0.03	0	0	0	0
Aluminium	0	0	0	0	0	0	0	0	0	0	0	0
Steel	0	0	0	0	0	0	0	0	0	0	0	0
Wood	0	0	0	0	0	0	0	0	0	0	0	0
TS Aluminium	0	0	0	0	0	0	0	0	0	0	0	0
Pingless	0	0	0	0	0	0	0	0	0	0	0	0
Composite	0	0	0	0	0	0	0	0	0	0	0	0
Polyurethane	0	0	0	0	0	0	0	0	0	0	0	0

Also, Quotation and Order Acknowledgement reports are updated to display U-value.

Super Quality Windows
17 Brighton Road,
Surrey, Surrey,
KT8 5LR, UK

Quotation

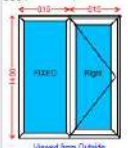
To	Deliver to
Holly Kent 22 Caxton Place BUSSAGE GL6 4WZ UK	22 Caxton Place BUSSAGE GL6 4WZ UK

Quote No.	Customer Ref.	Quote Date
00000005		12/16/2025

Dear Holly,

Thank you for giving my company the opportunity to provide you with the following quotation for your perusal.
Should you require any further information, please feel free to contact me at the above number.

Sales Line	Details	Qty	Rate	Amount
0001 1	Living Room Logik Internally Glazed system Casement F.R 1230w x 1480h 4-20-4 Pilkington OptiFloat+KS Argon SwissSpacer	1	74.93	74.93



U-value 1.3391

Super Quality Windows
17 Brighton Road,
Surrey, Surrey,
KT8 5LR, UK

Order Acknowledgement

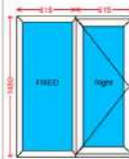
To	Deliver to
Holly Kent 22 Caxton Place BUSSAGE GL6 4WZ UK	22 Caxton Place BUSSAGE GL6 4WZ UK

Order No.	Customer Ref.	Order Date
00000005		12/16/2025

Dear Holly,

Thank you for giving my company the opportunity to provide you with the following quotation for your perusal.
Should you require any further information, please feel free to contact me at the above number.

Sales Line	Details	Qty	Amount
0001 1	Living Room System Description Size Glazing Logik Internally Glazed system Casement F.R 1230w x 1480h 4-20-4 Pilkington OptiFloat+KS Argon SwissSpacer	1	74.93



U-value 1.3391

OPTIONS

Introducing a new option visibility — “Visible and Changeable” — expanding flexibility in option behaviour and default handling during order entry. These options behave similarly to “Hidden and Changeable”, but are visible and prompted at order entry, allowing users to view and modify values while still retaining rule-based defaults.

Introducing a new Option Type — “Adjustment”. The Adjustment option behaves the same as the existing Size option, with one key difference:

- When using Metric units, it supports values with one decimal place (0.1 mm precision).
- When using Imperial units, values continue to be stored in 1/64th of an inch, consistent with the existing Size option behaviour.

Option 4413: Slider Int Clr-MV

Header

ID: 4413

Description: Slider Int Clr-MV

Type: **Adjustment**

Category: Profile System

Prompt: Never

Costhead: <none>

Answers:

☐ Optional ☐ Mixable by Frame

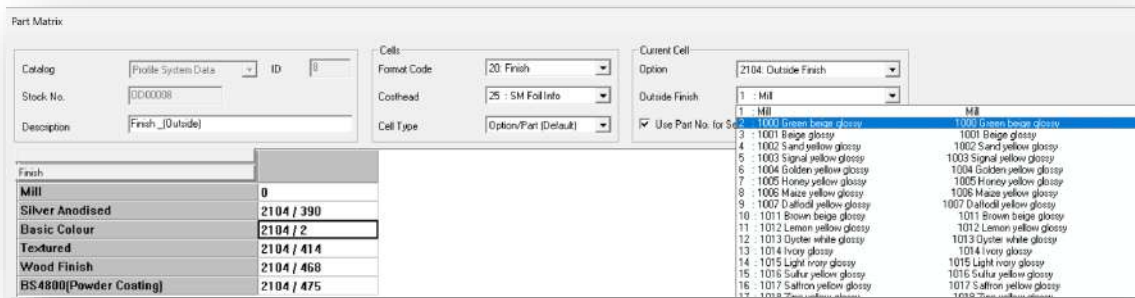
Not Mixable

Hidden and Changeable

Minimum: -500 Maximum: 500

PART MATRICES

When “Use Part No. for Selection” is enabled, the Answer List in the Part Matrix now displays both the Answer ID and Answer Description for text-type options.

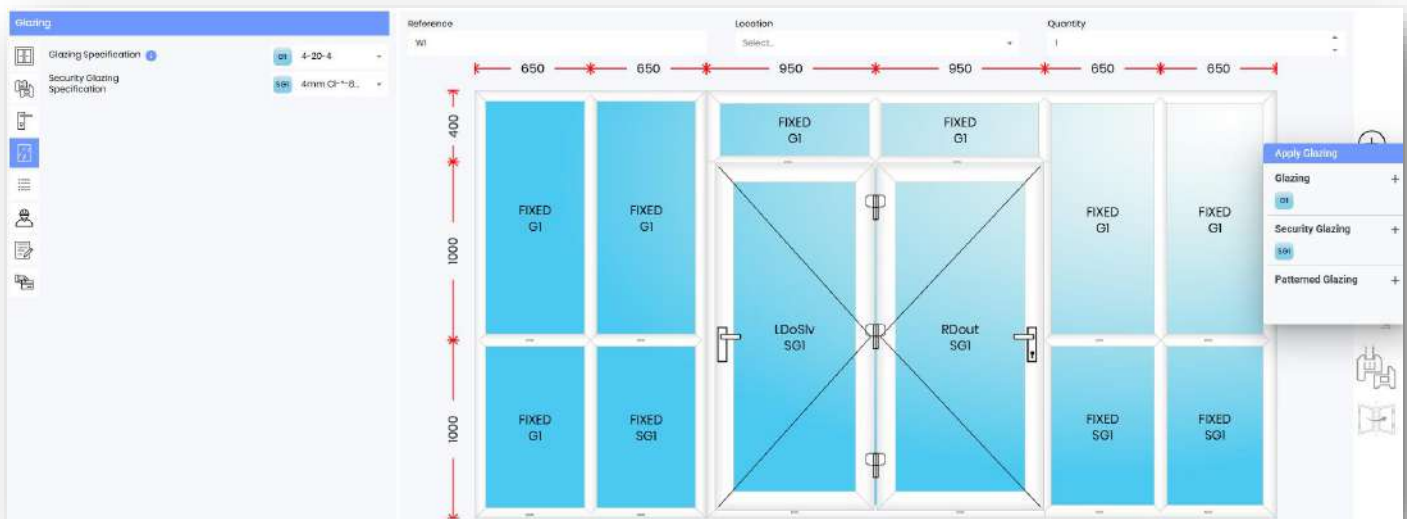


Option	Answer ID	Answer Description
1	Mill	Mill
2	1000 Green beige glossy	1000 Green beige glossy
3	1001 Beige glossy	1001 Beige glossy
4	1002 Sand yellow glossy	1002 Sand yellow glossy
5	1003 Signal yellow glossy	1003 Signal yellow glossy
6	1004 Golden yellow glossy	1004 Golden yellow glossy
7	1005 Honey yellow glossy	1005 Honey yellow glossy
8	1006 Maize yellow glossy	1006 Maize yellow glossy
9	1007 Daffodil yellow glossy	1007 Daffodil yellow glossy
10	1011 Brown beige glossy	1011 Brown beige glossy
11	1012 Lemon yellow glossy	1012 Lemon yellow glossy
12	1013 Oyster white glossy	1013 Oyster white glossy
13	1014 Ivory glossy	1014 Ivory glossy
14	1015 Light ivory glossy	1015 Light ivory glossy
15	1016 Sulfur yellow glossy	1016 Sulfur yellow glossy
16	1017 Saffron yellow glossy	1017 Saffron yellow glossy
17	1018 Teal glossy	1018 Teal glossy

GENERAL ENHANCEMENTS – WINDOWMAKER WEB

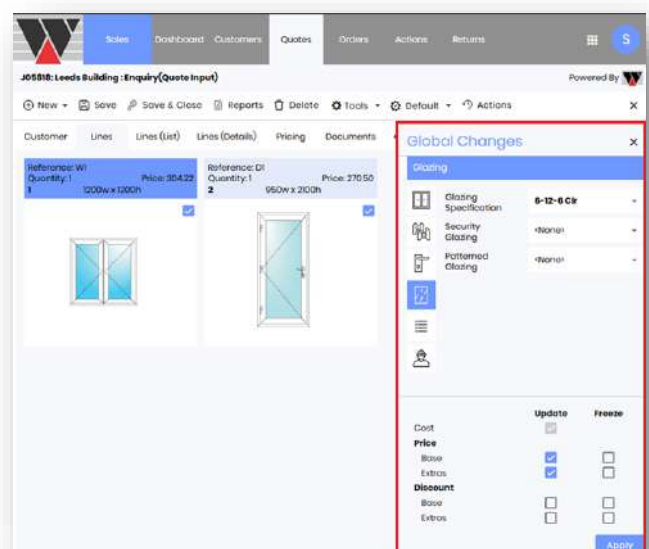
MIX GLAZING SPECIFICATION

Windowmaker Web now supports the ability to mix glazing specifications. Users can select different glazing types — such as Normal Glazing, Security Glazing, and Patterned Glazing.



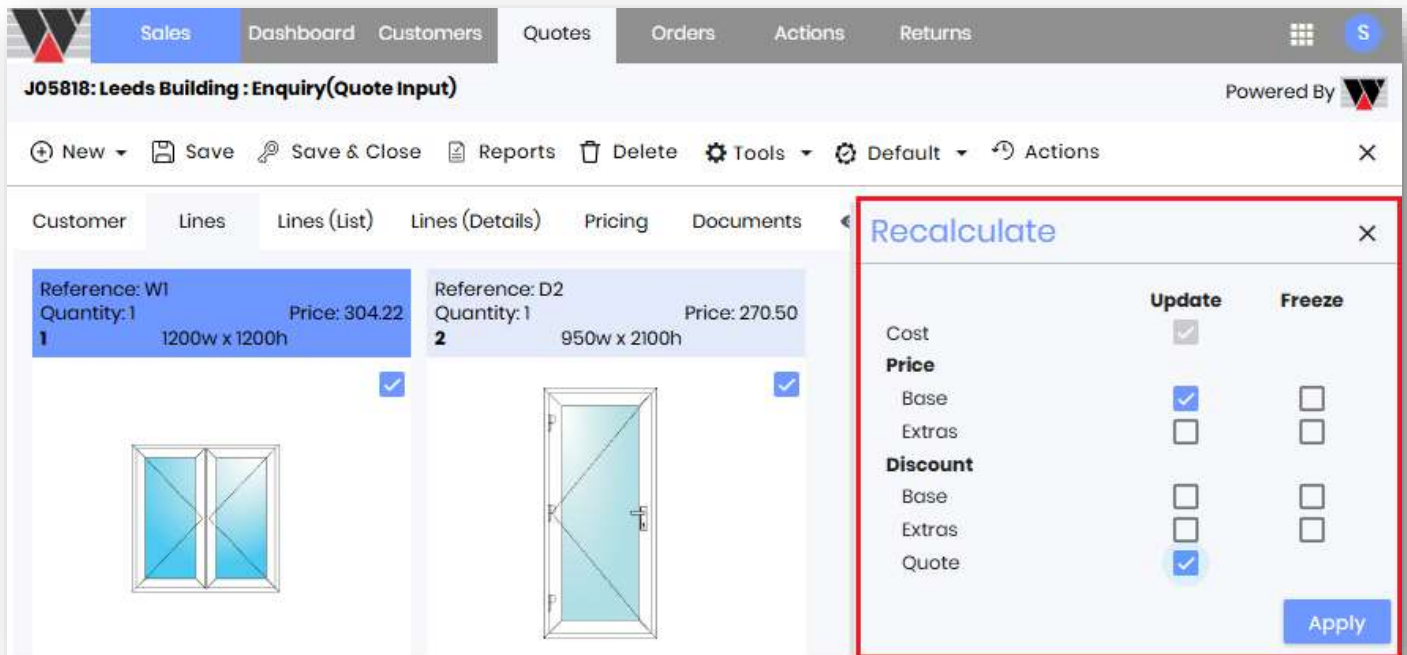
GLOBAL CHANGES

The Global Changes functionality is now available in Windowmaker Web, allowing users to apply specification changes such as system, glazing and options across multiple Sales Lines efficiently. User can update/freeze Price and/or Discount.



RECALCULATE

The Sales Quote Recalculation functionality is now available in Windowmaker Web, allowing users to recalculate Sales Header and Sales Line details based on the latest configuration, pricing, and discount.



BAYS & BOWS

Windowmaker Web now supports Bows and American Bay.

PART SALES LINE

Windowmaker Web now supports +Part Sales Line.

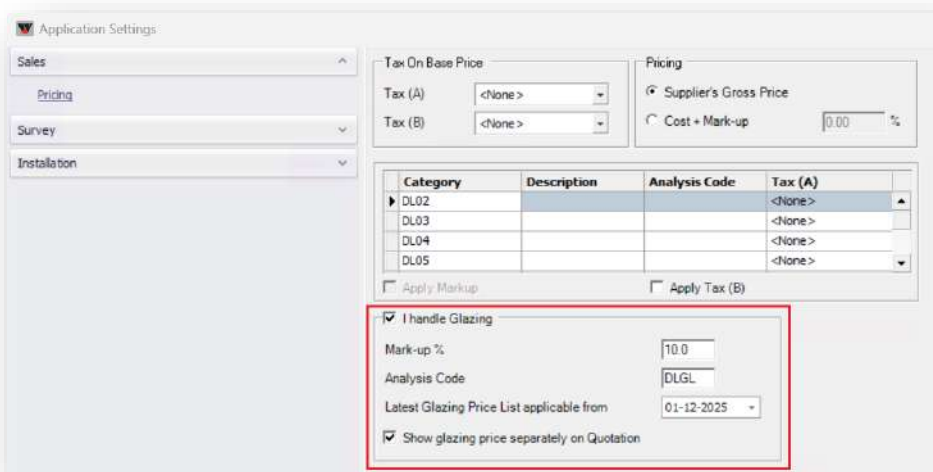
ENHANCEMENT TO OPTIONS - WINDOWMAKER

DEALER CLIENT - ENHANCED DEALER HANDLING OF GLASS

Windowmaker Dealer Client now supports glazing cost management, allowing dealers to control glass pricing, apply mark-ups, and handle supplier orders independently.

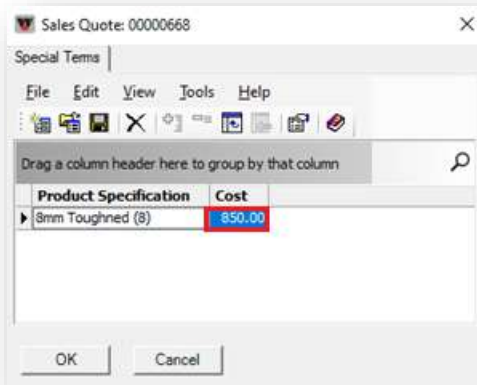
Dealers can now manually define glazing costs within Sales Quotes. Windowmaker automatically retrieves glazing costs from previous quotes, if available. The Glazing BOM is also available.

Additionally, dealers can generate and send Purchase Orders for glazing directly to their local suppliers.



Sales Quote

Define the glazing cost from Special Terms in the Sales Quote.



Note: Windowmaker deducts fabricator glazing cost when dealer handles glazing.

Report Enhancements

Quotation has been updated to display Glazing cost separately.

Sales Line	Details	Qty	Rate	Amount
0001 W1	Living Room WE Plus Series Fixed/2P2T sliding W_R A11001 1400w x 1600h 8mm Toughned (8)	1	13788.45	13788.45
	Glass		1674.25	1674.25
Payment Terms 20% on Order and 30% on Production and 50% on Installation		Total	₹	15462.70
		Installation	₹	1120.00
		Total Goods	₹	16582.70
		GST 18.00%	₹	2683.52
		Grand Total	₹	19266.22

Glazing Purchase Order

Dealers can now set up local suppliers of type 'Glazing' within Windowmaker Dealer Client to manage their independent glass procurement process. These suppliers will appear in the WM_Glass Order Report, allowing dealers to generate and send glazing purchase orders directly to their chosen suppliers.

To activate this functionality, ensure the following settings are configured:

Dealer Settings

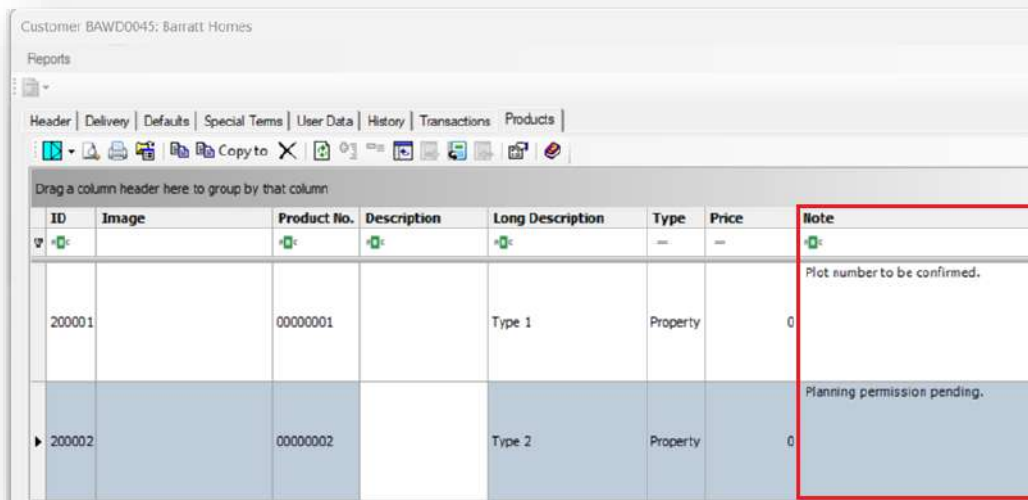
- I handle the Glazing – Enables glazing management at the dealer level.
- Mark-up % for Glazing – Allows defining the percentage margin to apply on glazing cost.
- Latest Glazing Price List applicable from <date> – Specifies the date from which the latest glazing price list became applicable. The system stops referencing glazing prices from quotes before this date.
- Show Glazing price separately on Quotation – Enables separate glazing price display on quotation.
- To support above, additional user rights have been enabled in Windowmaker Dealer Client:
 - Sales Line BOM – View – Enables visibility of Glazing Bill of Materials.
 - Setup – Supplier – Change/View – Allows dealers to create/update glazing suppliers.

- Also provide Costs, Margins – Change/View – Allows dealers to view and modify glazing costs and margins.

PROPERTY TYPES

The existing multiline text field 'Note' within Property setup can now be added as a column through the Column Chooser on the Products tab.

Enables users to enter and display property-specific comments directly within the product list.



Customer: BAWD0045: Barratt Homes

Reports

Header | Delivery | Defaults | Special Terms | User Data | History | Transactions | **Products**

Drag a column header here to group by that column

ID	Image	Product No.	Description	Long Description	Type	Price	Note
200001		00000001		Type 1	Property	0	Plot number to be confirmed.
▶ 200002		00000002		Type 2	Property	0	Planning permission pending.

LINK TO SAW

Windowmaker now links to Proline MC330V2.

LINK TO WORKING CENTRE

Windowmaker now links to Sturtz FC3000.

LINK TO WELDER

Windowmaker now links to Graf Welder – SL4FF EVO RS and Sturtz Welder Countline 4-Head.

LINK TO GLASS CUTTING TABLE

Windowmaker now links to Bottero Glass Cutting Table.

ISSUES FIXED

Sales->Sales Headers ->Performance 72249, 72328, 72330, 72374, 72382, 70476, 69420, 68805

Time taken to do the following operations on Sales Headers with large number of sales lines is now much improved:

- Copy
- Convert Sales quote to order
- Creating a Revision
- Activating a Revision
- Automatic Sub order Creation
- Sales Header Recalculation and Global changes
- Applying Special Glazing Cost
- Pricing Special Terms

Sales-> Sales Header List->Customise Appearance – 70080

Changes done to the Sales Header List view using 'Customise Appearance' were sometimes not available for the next session even if saved by the user. This is now resolved.

Sales – Phased Orders - Create Sub-Orders -70953

Short Production Note was not copied to the Sub-Order sales Line on sub-order creation. This is now fixed.

Sales – User Define Fields – Multiline Field -74942

Multiline UDFs were not displaying enough height for multiple lines of input, making data entry difficult. This has now been corrected.

Sales – Line configuration – Graphics – 74701, 51424, 70700, 67286

Issue with incorrect bead drawings for some Arch shapes is now resolved. Similarly, issues with incorrect hardware graphics for certain angled is also fixed.

Angled shapes 14 and 15 showed Flipped Graphics on some reports. This issue is also fixed.

Sales – Line configuration – Grid Wizard – 70755

Changes using Grid Wizard were not allowed for line with Severe Warnings. This is now allowed.

Purchasing->Purchase Ordering-> Report, Manufacturing->Report->Glass Order – 69708, 69329, 67580, 69115, 76203

- The 'WM_Glass Order' report sometimes printed incorrect graphics for arched shape glass. This is now fixed.
- Long glazing descriptions with spacer, grid, and process were also getting truncated. This is also fixed.
- Sometimes incorrect quantity of glazing units was printed in 'WM_Glass Order' for a Production Batch when the unit count spanned across pages. This issue is also resolved.
- Issue with truncation of Grid dimension when printing values in Imperial fractions is also solved.
- When user update the status to "Ordered" of a purchase order, only one glass record gets displayed in the purchase order file (.ASC). This issue is also resolved.

Manufacturing->Reports->Frame Label - 73809

The issue with the Frame Label report crashing due to sales line images with very small heights is now fixed.

Installation->Schedule Board -74527

The missing information in the Customer Reference column on the Installation Schedule Board is now available.

DATABASE SCHEMA CHANGES

New database Tables are added as listed below:

Table	Remark
WMProfileCutlet	Profile Cutlet details will be stored.

Changes specific to database tables are as listed below:

Table	Column	Change
WMProduct	CatalogHeaderID	Included in Primary key constraint
	RulesData2	Added
WMProductCosting	CatalogHeaderID	Included in foreign key constraint referencing to WMProduct.CatalogHeaderID
WMProductBasePricing	CatalogHeaderID	Included in foreign key constraint referencing to WMProduct.CatalogHeaderID
WMProductMapping	CatalogHeaderID	Added and included in foreign key constraint referencing to WMProduct.CatalogHeaderID
WMCustomerSpecialTerm	CatalogHeaderID	Added and included in foreign key constraint referencing to WMProduct.CatalogHeaderID
WMSupplier	OrganisationID	Included in Primary key constraint
WMBomTable	LongDescription	DataType (Previous- nvarchar(60), New- nvarchar(200))
	OrganisationID	Included in foreign key constraint referencing to WMSupplier.OrganisationID
WMSupplierTransaction	OrganisationID	Included in foreign key constraint referencing to WMSupplier.OrganisationID

New Trigger added as listed below:

Table	Remark
wm_tg_AfterUpdateWMCustomer	Added