



WINDOWMAKER®
SOFTWARE

WINDOWMAKER 2026

Release Version: 26 R1.0.0

Date: 09/04/2026

CONTENTS

Upgrading from older versions.....	3
General Enhancements – Windowmaker	4
Sub-Assembly type Parts and Part Matrices - Allow filter criteria	4
U – Value Calculation	4
Glazing	5
Order Entry	6
General Enhancements – Windowmaker Web	6
Windowmaker Web – New UI.....	6
Enhancement to Options – Windowmaker	7
Surveying - Link to WM Measure – Import back into Windowmaker	7
Link to CAD I/II	8
Link to Working Centre.....	8
Advanced Data Management Tools	9
Enhancement to Options – Windowmaker Web	10
Whatsapp Integration.....	10
Issues Fixed	11

UPGRADING FROM OLDER VERSIONS

When upgrading, please also refer to the following documents for changes since your current version:

If your current version is	What's New	Release Notes
Windowmaker 2026 (v26.x)	https://windowmaker.com/public/en/pdf/windowmaker-2026-rx-release-document.pdf	
Windowmaker 2025 (v25.x)	https://windowmaker.com/public/en/pdf/windowmaker-2025-rx-release-document.pdf	
Windowmaker 2024 (v12.x)	https://windowmaker.com/en/pdf/windowmaker-2024-r12.x-release-document.pdf	
Windowmaker 2023 (v11.x)	https://windowmaker.com/en/pdf/windowmaker-2023-r11.x-release-document.pdf	
Windowmaker 2022 (v10.x)	https://windowmaker.com/en/pdf/windowmaker-2022-r10.x-release-document.pdf	
Windowmaker 2021 (v9.x)	https://windowmaker.com/en/pdf/windowmaker-2021-r9.x-release-document.pdf	
Windowmaker 2020 (v8.x)	https://windowmaker.com/en/pdf/windowmaker-2020-r8.x-release-document.pdf	
Windowmaker 2018 (v7.x)	www.windowmaker.com/en/pdf/Windowmaker%202018%20(v7.x)%20What's%20New.pdf	www.windowmaker.com/en/pdf/Windowmaker%202018%20(v7.x)%20Release%20Notes.pdf
Windowmaker 2012 (v6.x)	www.windowmaker.com/en/pdf/Windowmaker%202012%20(v6.x)%20What's%20New.pdf	www.windowmaker.com/en/pdf/Windowmaker%202012%20(v6.x)%20Release%20Notes.pdf

You may also refer:

Windowmaker Technical Requirements	https://windowmaker.com/en/pdf/windowmaker-technical-requirements.pdf
------------------------------------	---

GENERAL ENHANCEMENTS – WINDOWMAKER

SUB-ASSEMBLY TYPE PARTS AND PART MATRICES - ALLOW FILTER CRITERIA

Introducing filter criteria for sub-assembly type parts and part matrices. The Answers tab will display a list of available sub-assembly parts and part matrices for the Unit Part Filter option type.

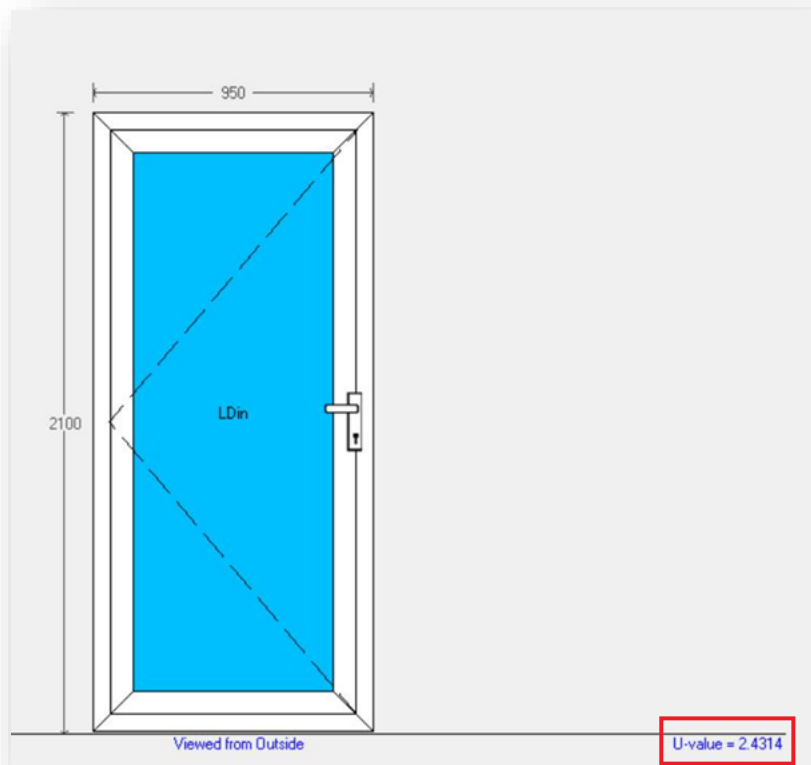
The benefits are:

1. Allows real kit parts to be answers to options. Previously answers were setup as non-real, then used in the rules to calculate the real parts.
2. Part Matrices of Kit parts can be answers to Options of type 'Unit (Part Filter)'.

This will make data setup easier.

U – VALUE CALCULATION

Windowmaker now displays the window U-value directly on Solution page.



U-Value Calculation Report

The U-Value calculation report has been enhanced to include:

- The Fabricator Logo
- Sales Line elevation graphics on Sales Line sheets.
- Display the company name, processor name, and the report creation date.

Window & Door Co
14, Shantivan Park,
Near old court
Laxmipura
Vadodara
Gujarat
364945
0265123789

Quote No. 00000001 Customer ABCD
Report Authorised By Mr. John G. Report Date 16-03-2026
Powered By WINDOWMAKER SOFTWARE

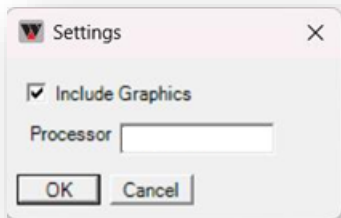
Frame	Sash 1	Transom	Sash 2	Bead	Position	Length	Section Width	Af	Uf	Uf * Af	Outlet ID
60mm	105mm+EWS518A			EWS7301W	F^A1	950	137	0.1114	1.5	0.1671	45
60mm	105mm+EWS518A			EWS7301W	F_A2	950	137	0.1114	1.5	0.1671	45
60mm	105mm+EWS518A			EWS7301W	F<A1	2100	137	0.2689	1.5	0.4034	45
60mm	105mm+EWS518A			EWS7301W	F>B1	2100	137	0.2689	1.5	0.4034	45
									0.7606	1.141	

Glazing	Position	Size	Sightline Size	Ag	Ug	Ug * Ag
4mm Cl-16-8mm T Black Bar	G.A1	706x1856	676x1826		1.2344	2.6
					1.2344	3.2094

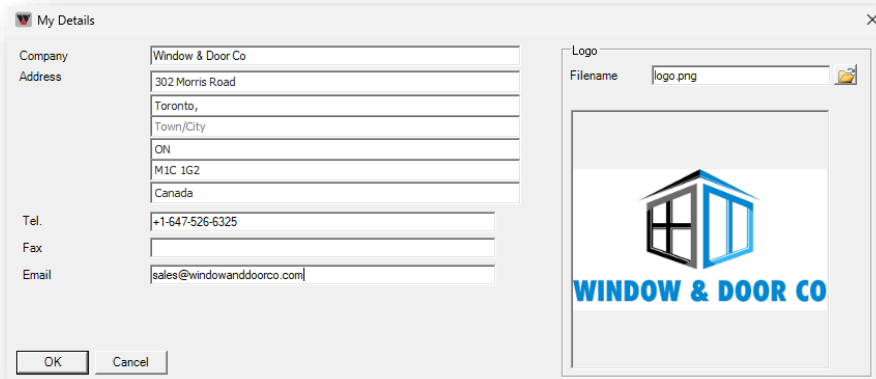
Spacer	Position	Sightline Perimeter(L)	ψ	L * ψ
Black Bar	G.A1	5.004	0.1	0.5004
		5.004		0.5004

Window U-Value= **2.4315** 2.4

Introducing the report parameters to control whether processor details and Sales Line graphics are included or not.



Fabricator logo configuration is now available in Administration → My Details.



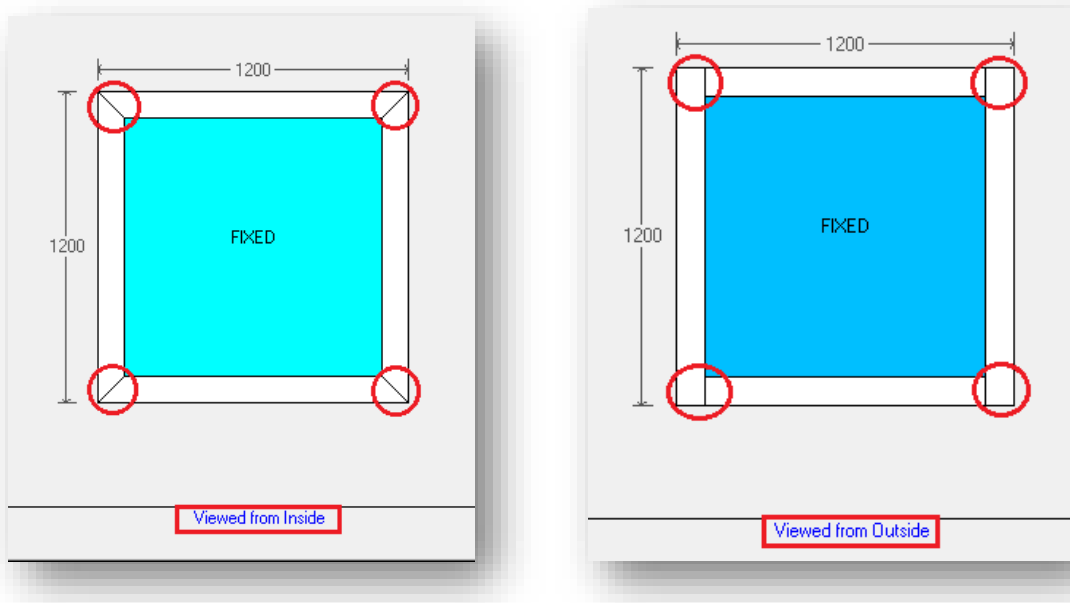
GLAZING

A 'Glass Cost' column now appears in the Glass Search view on the Order Entry page, when the Costing Version option is **not** available in the licence.

ORDER ENTRY

Mech Weld Joins

Windowmaker now supports “Mech Weld” / HFL joins for profiles, enabling different visual representations for inside and outside views while maintaining accurate manufacturing output.



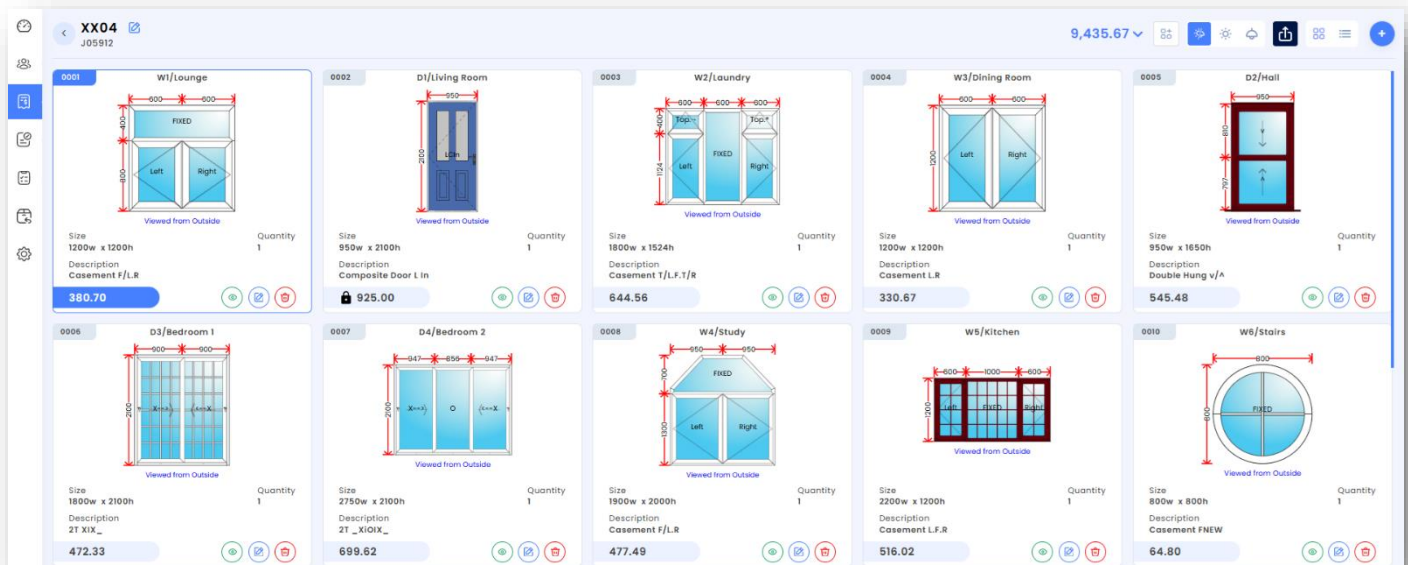
Profiles can now be configured to appear welded on one side and mechanically joined on the other.

GENERAL ENHANCEMENTS – WINDOWMAKER WEB

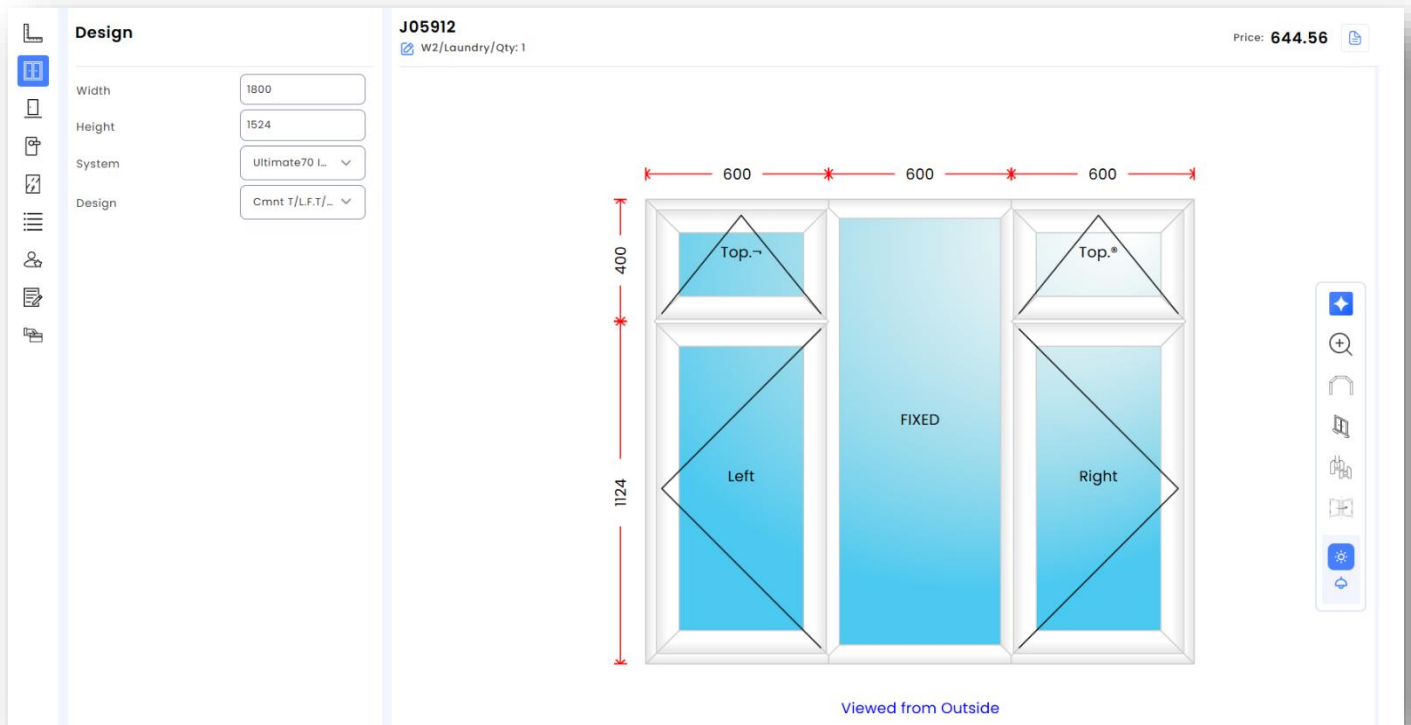
WINDOWMAKER WEB – NEW UI

Windowmaker Web now introduces a new, modern user interface, designed to improve usability, clarity, and overall performance.

Lines



Design Configuration



J05912
W2/Laundry/Qty: 1

Price: **644.56**

Width: 1800
Height: 1524
System: Ultimate70 L...
Design: Cmnt T/L,F,T,...

600 600 600

400

1124

Top.~ Top.*

Left FIXED Right

Viewed from Outside

Quotes Live

Actions	Quote	Account	Name	Customer Ref.	Quote Value	Status	Comment	Quote Date	Region	Owner
	J05977	XX04	John Smith		6,726.95	Enquiry(Quote Input)		01/06/2027	South East	Aaron
	J05976	XX04	Alex Morgan		11,520.22	Enquiry(Quote Input)		01/06/2027	South East	Aaron
	J05975	XX04	Laura Bennett		16,307.75	Enquiry(Quote Input)		01/06/2027	South East	Aaron
	J05974	XX04	Luke Martin		12,480.88	Enquiry(Quote Input)		01/06/2027	South East	Aaron
	J05973	XX04	Ryan Cooper		9,220.61	Enquiry(Quote Input)		01/06/2027	South East	Aaron
	J05972	XX04	Tom Edwards		17,107.29	Enquiry(Quote Input)		01/06/2027	South East	Aaron
	J05971	XX04	Ben Carter		10,868.55	Enquiry(Quote Input)		01/06/2027	South East	Aaron
	J05970	XX04	Oliver James		6,338.16	Enquiry(Quote Input)		01/06/2027	South East	Aaron
	J05969	XX04	Simon Wright		5,262.80	Enquiry(Quote Input)		01/06/2027	South East	Aaron
	J05968	XX04	Alan Baker		5,822.62	Quotation Sent		01/06/2027	South East	Aaron
	J05967	XX04	Kevin White		5,112.82	Enquiry(Quote Input)		01/06/2027	South East	Aaron

ENHANCEMENT TO OPTIONS – WINDOWMAKER

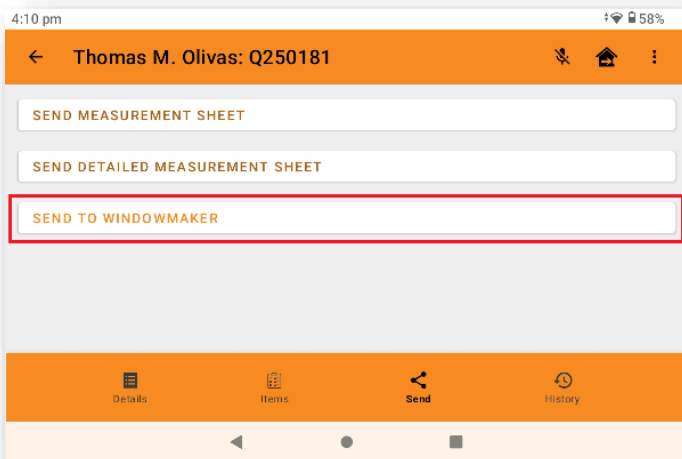
SURVEYING - LINK TO WM MEASURE – IMPORT BACK INTO WINDOWMAKER

Import surveyed size back into Windowmaker is now available. This will avoid re-entry of surveyed sizes into Windowmaker which will eliminate costly errors (e.g. typos, not picking the smallest of the measured sizes).

This now completes the entire survey cycle digitally: WM → WMM → WM.

Export from WM Measure

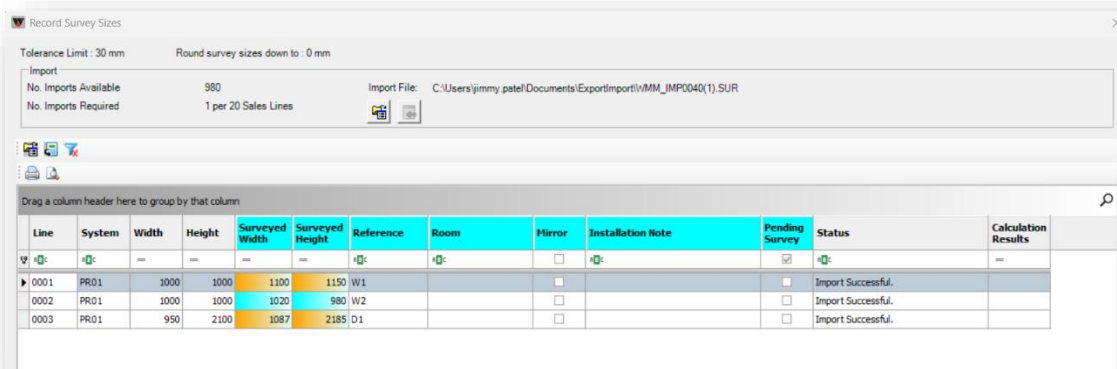
Once Survey activity will be completed using WM Measure, click on send button → Send to Windowmaker.



This will generate a .SUR file from WM Measure which surveyor will share with the office.

Import into Windowmaker

Import survey sizes from a .SUR file generated from WM Measure. It can then be imported in Windowmaker from Record Survey Sizes dialog to record survey details.



It also transfers the Reference, Room and Installation Note from the app. This way the Surveyors can communicate the surveyed details back to the office.

LINK TO CAD I/II

Windowmaker Link to CAD now works with AutoCAD® 2026.

LINK TO WORKING CENTRE

Windowmaker now links to

- Proline MC330V2
- FENSTEK CNC Copy Routing Machine (CMC3-2500 & CMC4-2500)

V & Y Notch Capabilities – Independent Configuration of Notch Type and Direction

It is now possible to specify whether the saw is capable of doing V/Y notches from above only. Earlier it was assumed that saws capable of doing V/Y notches can always do so from below. Windowmaker flips the profile, if required and possible, depending on the saw capabilities.

Before Upgrade

V and Y notch Capabilities

V notches from Below

From Above

Y notches from Below

Affect Pairing

After Upgrade

V and Y notch Capabilities

Notches

V notches

Y notches

From

Below

Above

Affect Pairing

ADVANCED DATA MANAGEMENT TOOLS

Products- Export/Import Products (Spreadsheet)

The Export/Import Products (Spreadsheet) now includes sub-assembly parts in a new sheet - KIT, where each row represents a kit part and the columns list the associated normal parts along with their respective quantities and filter criteria.

Export Products (Spreadsheet)

Export To: _____

Product Type: **Kit**

Export Graphics

Width, Height

Labour

Warning

Error

Percentage

Kit

Operation

Export Cancel

OK Cancel

	A	B	C	D	E	F	G	H	I	J	K	L	M	N
1	Catalog	Catalog	Product ID	Product Type	Status	Product No.	Description	Long Description	Tag	Costhead	Weight	Pack Quantity	Print	Track
2	8329042	Fittings Data	901	801	Active	H06	H06 - Slimline	H06 - Slimline Handle Locking			171	0	0	0
3	8329042	Fittings Data	902	801	Active	H08	H08 - Locking	H08 - Locking Handle			171	0	0	0
4	8329042	Fittings Data	903	801	Active	H09	H09 - Rosette	H09 - Rosette			171	0	0	0
5	8329042	Fittings Data	904	801	Active	H12	H12 - Peardrop	H12 - Peardrop Handle Locking			171	0	0	0
6	8329042	Fittings Data	905	801	Active	H15	H15 - Reeded	H15 - Reeded Handle Locking			171	0	0	0
7	8329042	Fittings Data	906	801	Active	H16	H16 - Monkeytail	H16 - Monkeytail Handle Locking			171	0	0	0
8	8329042	Fittings Data	907	801	Active	H18	H18 - Low Profile	H18 - Vivo Low Profile Handle			171	0	0	0
9	8329042	Fittings Data	908	801	Active	H21	H21 - Flush /Disc	H21 - Flush Lock with Cover Disc			171	0	0	0
10	8329042	Fittings Data	909	801	Active	H22	H22 - Flush /Secure	H22 - Flush Lock Security Cover Plate			171	0	0	0
11	8329042	Fittings Data	910	801	Active	H29	H29 - Pivot	H29 - Pivot Handle			171	0	0	0
12	8329042	Fittings Data	911	801	Favorite	H07	H07 - Non-Locking	H07 - Non-Locking Handle			171	0	0	0
13	8329042	Fittings Data	912	801	Favorite	TEST	TEST	TEST			171	0	0	0
14														

KIT +

Move Records

The move records functionality is now enhanced to update sub-assembly parts and part matrices criteria for the Unit Part Filter option type.

ENHANCEMENT TO OPTIONS – WINDOWMAKER WEB

WHATSAPP INTEGRATION

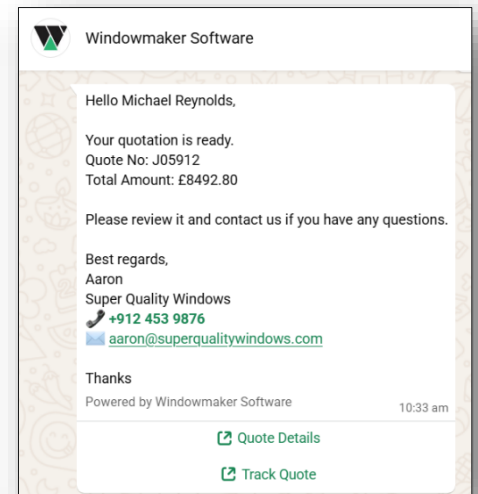

Windowmaker Web now supports WhatsApp integration, allowing fabricators to send Smarter Quote and customer documents (pdf) directly from their Meta-registered WhatsApp number.

Smarter Quote

Smarter quote is an interactive, web-based quotation sharing feature in Windowmaker Web.

Shared as a WhatsApp link, it gives customers access to pricing, product details, and terms.

With the 3D View, users can explore the design visually and get a real feel of the product, making quotations more engaging and easier to understand.

Quote: **J05912** Price: **£ 9,435.67**

Item	Description	Size	Quantity	Price
0001	W1/Lounge Casement F/L.R	1200w x 1200h	1	£ 380.70
0002	D1/Living Roo... Composite Door L In	950w x 2100h	1	£ 925.00
0003	W2/Laundry Casement T/L.F.T/R	1800w x 1524h	1	£ 344.65
0004	W3/Dining Ro... Casement L.R	1200w x 1200h	1	£ 398.67

Customer Lines Pricing Terms Contact

Powered By 

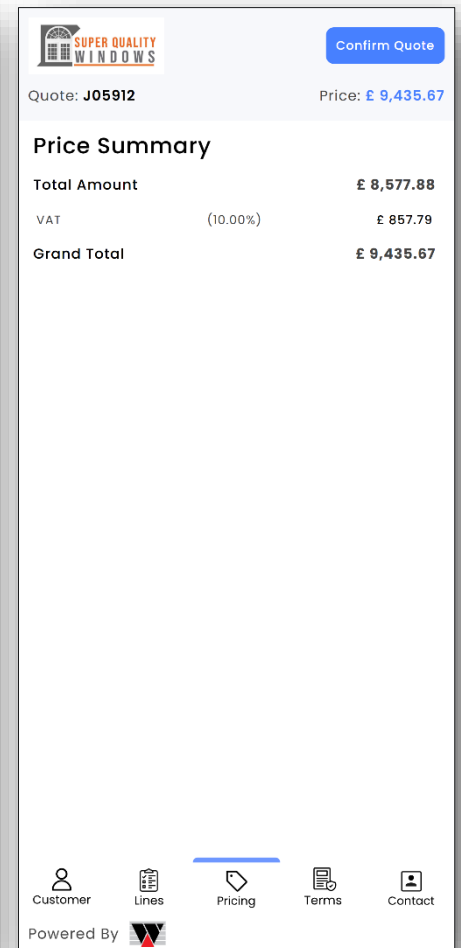


Quote: **J05912** Price: **£ 9,435.67**

0005 / D2 / Hall

Customer Lines Pricing Terms Contact

Powered By 




Quote: **J05912** Price: **£ 9,435.67**

Price Summary

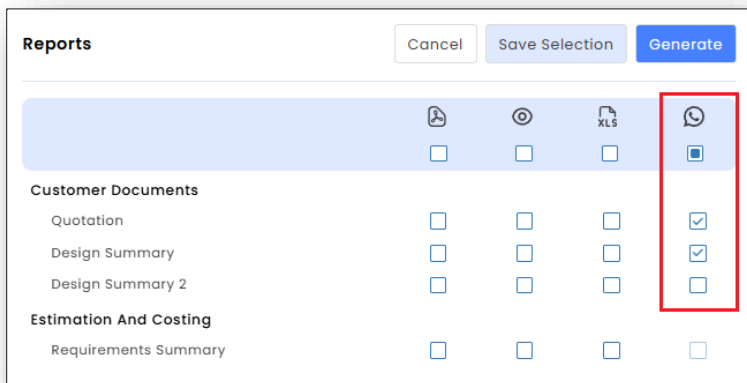
Total Amount	£ 8,577.88
VAT (10.00%)	£ 857.79
Grand Total	£ 9,435.67

Customer Lines Pricing Terms Contact

Powered By 

Customer Documents Reports

Users can send customer documents via WhatsApp directly from Windowmaker Web.



ISSUES FIXED

Sales→Customers - 78495

The issue with Customer name field getting blank on copying a customer is now resolved.

Customers→Products→Property Product – 78656

The issue with the program crashing on the Property List when user clicked 'Refresh' after removing the Note of property product is now resolved.

Sales→Order Entry→Credit Limit - 79679

When Credit limit was set with 'On Stop' in the customer and when user pressed "OK" button to save the existing Sales Order, Order Balance and Excess values in the customer gets increased, even when not expected. This is now fixed

Sales→Order Entry→Property Sales Lines – 78836

Contents of the Multiline text (Note) from property product were pre-pended to the multiline text generated by the Property system template during Order entry. This is now modified to only support the System template, like all other sales lines.

Sales→Order Entry→Schedule – 77081

The Order Date field on the 'Schedule' page of the Sales Order notebook allowed the date to be removed anytime. This caused issues in accessing various functionalities during the lifecycle of an Order.

The Order date will now be disabled If the Order is scheduled (applicable to users having the Scheduling options). For Other users it will be disabled If status >= "Under Survey" (if mapped) else >= "In Production".

Sales→Phased Orders→Stage sub-orders→Transfer Quantity – 78379

Issue with BOM records duplicating when stage sales line quantities were manually transferred from main Phased order to any existing sub-order is now fixed. This also fixed the issue of Sales line graphics not getting stored for such sales line.

Sales→Line configuration – 79009

A copied Sales Line no longer generates a new Reference. It inherits the value from the Original Sales line.

Sales→Line configuration→Pricing - 78495

Finish cost is not calculated if the part on which it is applied has part # > 16383.

Sales→Line configuration→Bays – 78361

The issue with the program sometimes hanging while changing design from a higher facet count to a lower one is now resolved.

Sales→History→Email – 80605

The issue with users using SMTP for sending Reports from History to themselves generated 3 Email copies. This is now resolved

Windowmaker→API – 79924, 78392

1. The missing Option type with tangible answers and Leaf Pattern Option (10505) are now included in the API endpoint /exportoptionmapping.
2. The issues with calculation errors on importing non-rectangular sales lines using /ImportSalesQuote and /ImportSalesOrder is also resolved.

Manufacturing→Reports→Production Document - 79005

Issue with missing Sales Header No. and Customer details going missing on subsequent pages of the production document is now resolved

Manufacturing→Reports→Profile Labels - 76363

Bead information missing in Profile Label for Excel based design even if the BOM was generated with correct position codes. This is now resolved

Products→Parts→Cost Matrix - 65213

It was not possible to increase the size of a cost matrix in the exported excel for indexes other than width and/or height criteria. This is now fixed.

Administration→Tools→Review locked Sales Headers - 79001

The Issue with error while unlocking a sales Order or Quote while locked Property records were also listed, is now fixed.