



OCTOBER 24, 2023

WINDOWMAKER 11.2.0

RELEASE DOCUMENT

AUTHOR: M KRISHNA KUMAR (KK)
WINDOWMAKER SOFTWARE



Contents

Upgrading from older versions	2
Windowmaker 2023 R2	3
General Enhancements	3
SQL Server 2022 for Windowmaker	3
History	3
Tax Calculations – Tax from System	3
Purchase Order, Glass Order	3
Export/Import Products	4
Pane Types	4
Saws - Y-Cut Capabilities	4
Quote/Order Pricing	6
Enhancements to Options	6
Bar Optimisation III – Piece Length greater than bar Length	6
Georgians, Shapes	7
Export-Import Sales Quotes/Orders	7
Link to Sales	8
Link to Saws	8
Enhancements to Products	8
Windowmaker Dealer Client	8
Windowmaker SQL Sales Client	8
Issues Fixed	9
Database Schema Changes	9

Upgrading from older versions

When upgrading, please also refer to the following documents for changes since your current version:

If your current version is	What's New	Release Notes
Windowmaker 2022 (v11.x)	https://windowmaker.com/en/pdf/windowmaker-2022-r11.x-release-document.pdf	
Windowmaker 2022 (v10.x)	https://windowmaker.com/en/pdf/windowmaker-2022-r10.x-release-document.pdf	
Windowmaker 2021 (v9.x)	https://windowmaker.com/en/pdf/windowmaker-2021-r9.x-release-document.pdf	
Windowmaker 2020 (v8.x)	https://windowmaker.com/en/pdf/windowmaker-2020-r8.x-release-document.pdf	
Windowmaker 2018 (v7.x)	www.windowmaker.com/en/pdf/Windowmaker%202018%20(v7.x)%20What's%20New.pdf	www.windowmaker.com/en/pdf/Windowmaker%202018%20(v7.x)%20Release%20Notes.pdf
Windowmaker 2012 (v6.x)	www.windowmaker.com/en/pdf/Windowmaker%202012%20(v6.x)%20What's%20New.pdf	www.windowmaker.com/en/pdf/Windowmaker%202012%20(v6.x)%20Release%20Notes.pdf

You may also refer:

Windowmaker Technical Requirements	https://windowmaker.com/en/pdf/windowmaker-technical-requirements.pdf
------------------------------------	-----------------------------------------------------------------------------------------------------------------------------------------------------------

Windowmaker 2023 R2

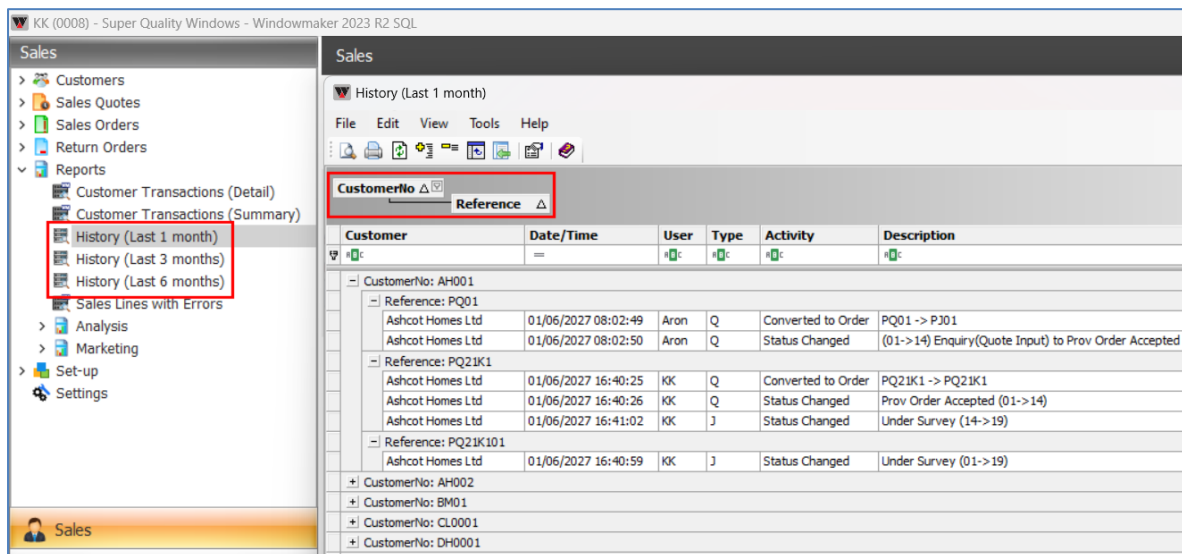
General Enhancements

SQL Server 2022 for Windowmaker

Windowmaker is now supported to work with SQL Server 2022.

History

It is now possible to view History records for the last 1, 3 & 6 months. Grouping, sub-grouping, filtering, sorting etc. maybe done further to fetch the specific information e.g., by user; by customer by quote/order number.




Tax Calculations – Tax from System

Windowmaker now allows selecting systems with 'Tax from System' during Order Entry when 'Analyse Extras separately' is ON and 'Apply Tax for Extras separately' is OFF.

Purchase Order, Glass Order

Glass Purchase Order and Glass Order can now optionally print customer name. Note that this is available only when the sequence is Sales Order based. This helps the supplier to include it in the labels, thereby helping in easier identification of pieces during glazing.

Super Quality Windows
17 Brighton Road
Surbiton, Surrey
KT6 5LR, UK



Purchase Order

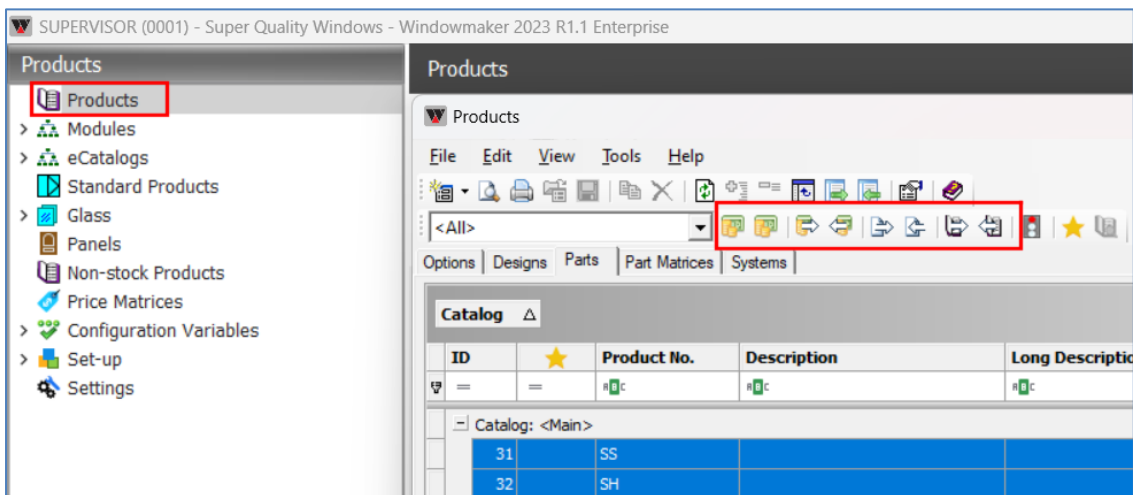
To		Deliver to	
Cleveland Glass Unit 4 Tweed Road Industrial Estate Cleveland Avon BS21 6RR		17 Brighton Road, Surbiton, Surrey, KT6 5LR UK	
P.O. No.	Order Ref.	Order Date	Due Date
	J00049/ R940C	02/06/2027	07/06/2027
Order No.	Customer	Customer Ref.	
J00049	Richard R. Key	R940C	
Line	Pane	Reference	Location
0002	FIXED /G.A2/2	W1	Living Room
0002	Top @ /G.A1/1	W1	Living Room
		Size	Qty
		1156w x 765h	0
		1103w x 312h	0

Export/Import Products

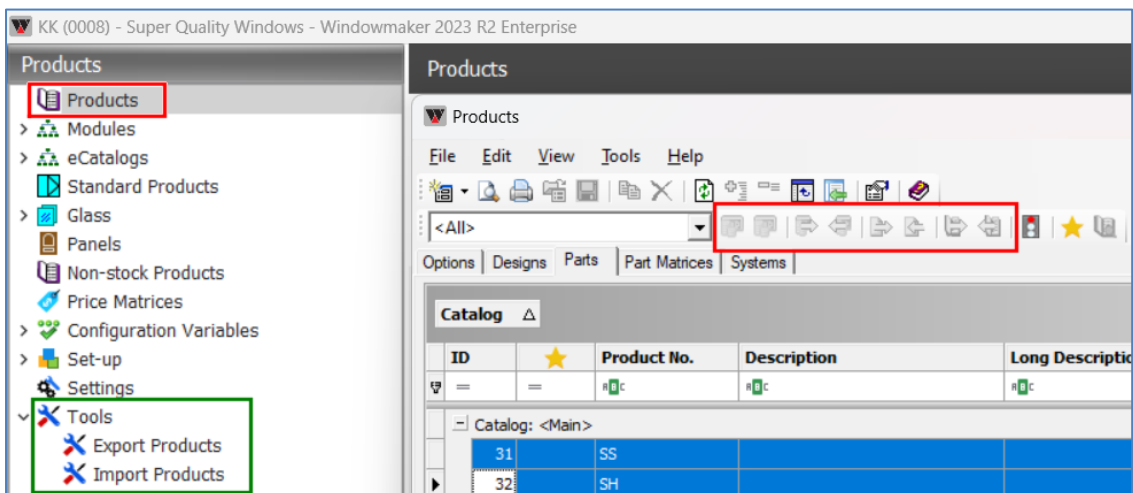
It is now easier to Export/Import multiple Modules/eCatalogs together. This can be done using Products → Tools: Export/Import Products.

All Products 'List' view no longer allows to Modify/Update Costs or Export/Import (any format). However, these can be done from individual Modules/eCatalogs.

Before Upgrade



After Upgrade

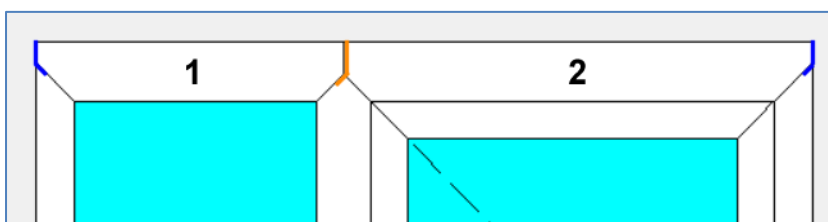


Pane Types

It is now possible to Export/Import Pane Types (as a '.CUP' file).

Saws - Y-Cut Capabilities

A Y-cut is required when there is a reverse butt weld (RBW) (marked orange in the image) or when two different thickness frames are joined (marked blue in the image). Y-cut includes a 45° cut and a 90° cut.



Earlier, Y-cuts were achieved in 2 steps: First by making a 45° cut/90° cut; Then by another 'operation' (cut) (e.g. HNT operation generated by Windowmaker).



However, the program can now directly instruct the saw/operator to make a Y-cut, if the saw has the capability to make Y-cuts.

For this, ensure that the Y-notch capability is turned ON on the saw settings.

Before Upgrade

V and Y notch Capabilities

☐ None

☐ Only from Below

☒ From Below and Above

☐ V and Y notches Affect Pairing

After Upgrade

V and Y notch Capabilities

☒ V notches from Below

☐ Y notches from Below

☒ From Above

☐ Affect Pairing

WARNING: By default, the Y-notch feature will be checked-off on the saw settings after upgrade. The existing working will continue as it is. However, to reduce the wastage, Links and Operations records in WC Tables will need to be updated along with enabling the Y-notch feature on the saw settings.

The Cutting List, Profile Labels and saw/machining centre control files will have works instructions to directly make the Y-cut.

Cutting List – if saw cannot make Y-notches

Order/ Sales Line	Slot	Qty	Size	Cut	Position
Order J00052 Customer GE0001 George Homes					
Outer Frame			EWS001W		1 x 6000
J00052 /0001	1	1	1406	\ /	F>1
J00052 /0001	1	1	1406	\ /	F<1
Offcut			3172		
Total			2	2812	1
Outer Frame Large			EWS006W		2 x 706
J00052 /0001	1	1	680	\	F_A
Waste			8		
J00052 /0001	1	1	680	\	F_B
Waste			8		
Outer Frame Large			EWS006W		1 x 710
J00052 /0001	1	1	680	/	F^A
Waste			10		

Cutting List – after Upgrade - if saw capable of making Y-notches

Order/ Sales Line	Slot	Qty	Size	Cut	Position
Order J00052 Customer GE0001 George Homes					
Outer Frame			EWS001W		1 x 6000
J00052 /0001	1	1	1406	\ /	F>1
J00052 /0001	1	1	1406	\ /	F<1
Offcut			3172		
Total			2	2812	1
Outer Frame Large			EWS006W		2 x 706
J00052 /0001	1	1	652	\= /	F^A
Waste			34		
J00052 /0001	1	1	652	\= /	F_A
Waste			34		
Outer Frame Large			EWS006W		1 x 710
J00052 /0001	1	1	652	\= /	F^B
Waste			38		

The Profile Labels will show correct graphics i.e., Y-cut instead of mitre cut earlier.

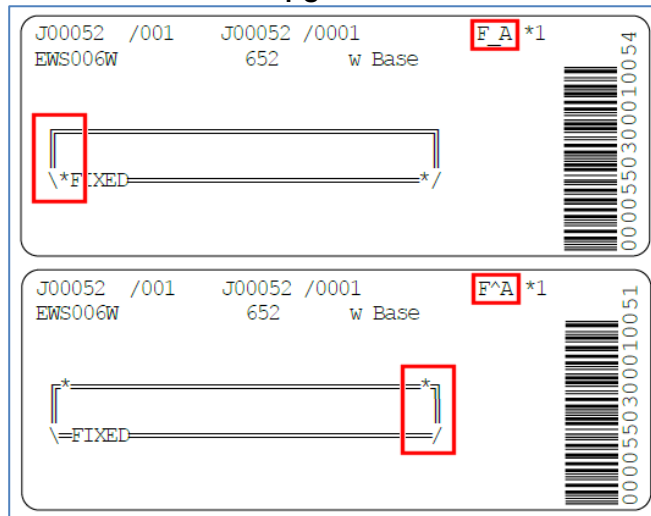
Profile Labels – before Upgrade



J00052 /001 J00052 /0001 F_A *1
EWS006W 680 w Base

J00052 /001 J00052 /0001 F^A *1
EWS006W 680 w Base

Profile Labels – after Upgrade



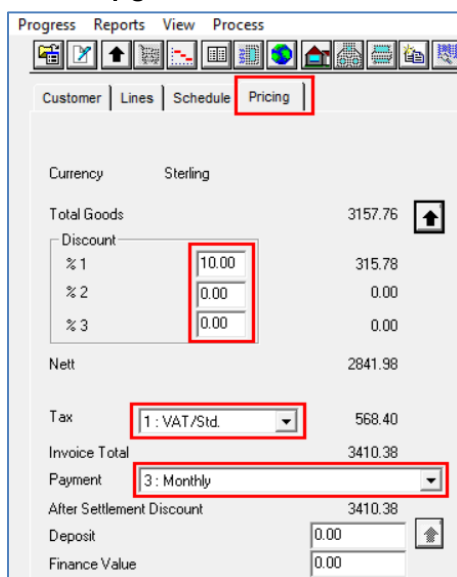
J00052 /001 J00052 /0001 F_A *1
EWS006W 652 w Base

J00052 /001 J00052 /0001 F^A *1
EWS006W 652 w Base

Quote/Order Pricing

Discounts, Tax and Payment Terms now need to be edited by clicking on the edit button provided.

Before Upgrade



Progress Reports View Process

Customer Lines Schedule Pricing

Currency Sterling

Total Goods 3157.76

Discount

% 1	10.00	315.78
% 2	0.00	0.00
% 3	0.00	0.00

Nett 2841.98

Tax 1 : VAT/Std. 568.40

Invoice Total 3410.38

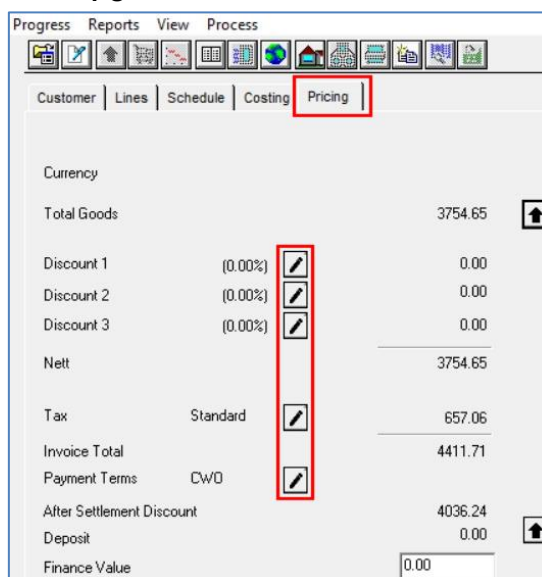
Payment 3 : Monthly

After Settlement Discount 3410.38

Deposit 0.00

Finance Value 0.00

After Upgrade



Progress Reports View Process

Customer Lines Schedule Costing Pricing

Currency

Total Goods 3754.65

Discount 1 (0.00%) 0.00

Discount 2 (0.00%) 0.00

Discount 3 (0.00%) 0.00

Nett 3754.65

Tax Standard 657.06

Invoice Total 4411.71

Payment Terms Cw/D

After Settlement Discount 4036.24

Deposit 0.00

Finance Value 0.00

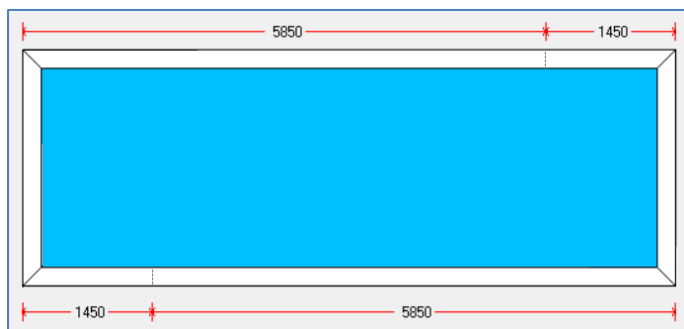
Enhancements to Options

Bar Optimisation III – Piece Length greater than bar Length

It is now possible to have profile sizes greater than bar length.

- Larger pieces are appropriately spliced into sizes less than bar length.
- Sequence of splicing is reversed for opposite sides of the rectangle. This way, the joins at frame top and bottom will not be one above the other. This is to impart better strength.
- Allows specifying the minimum piece length for splicing, on the System Joins page.
- Facility to define a +ve/-ve Adjustment value e.g.: to account for the length of connector, if any.
- Splicing feature applicable to reinforcements also.

WARNING: Machining Operations are currently not handled for spliced pieces. It will be available in an upcoming release. If you are using link to working centre, then it is recommended not to turn ON the Splicing functionality for Frame.



Splicing

☐ Overall

☒ Frame

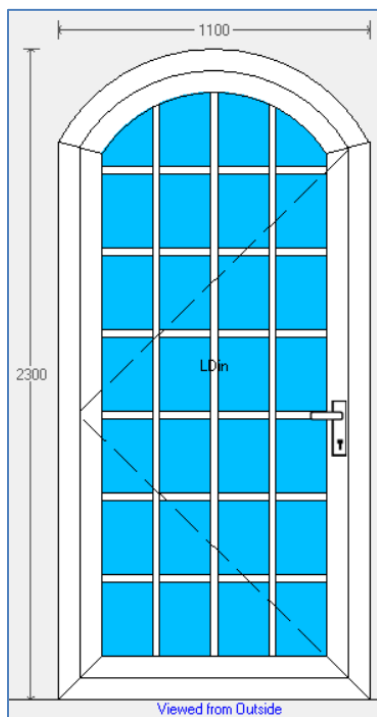
Adjustment

Minimum Piece Length

Bar Length Allowance

Georgians, Shapes

Arched shapes now allow having Stuck-on Grids in the arched portion. Note that hubs and spokes are still not allowed for Stuck-on type Grids.



Quantity	1					82 : Glass-BTD
Description	Qty.	Size	Where	Cost		
4-16-4 Clr 25mm Gr*	1	823w x 2023h 9	G-A1/1	32.97		
		[1795,1795,r=484]				
25mm Geo Bar GEO-25W	6	181w AC	G-A1	0.00		
25mm Geo Bar GEO-25W	12	180w CC	G-A1	0.00		
25mm Geo Bar GEO-25W	6	181w CA	G-A1	0.00		
25mm Geo Bar GEO-25W	2	1949h AA	G/A1	0.00		
25mm Geo Bar GEO-25W	1	1996h AA	G/A1	0.00		

Export-Import Sales Quotes/Orders

Windowmaker Sales Client

- Each quote/order is exported as a separate '.WQR'/''.WMR' file.
- Quotes/orders containing Extras can now be exported. Earlier they gave an error.
- Imported quotes/orders will have the original quote/order numbers.
- When importing, if the referred customer does not exist, first available Sundry Account is used.

Windowseller

- Orders containing Extras can now be exported. Earlier such orders gave an error.
- Imported quotes/orders will have the original quote/order numbers.

Windowmaker 2023 R2

Release Document



Link to Sales

The program now allows recording Deposits for a provisional order i.e., a Sales Quote that is not yet converted to a confirmed Sales Order. It now also allows recording payments against orders that are marked as complete.

Sales → Reports now provides two new views for 'Customer Transactions' - Detail and Summary. This helps to keep track of the payments received and outstanding against an order/customer.

KK (0008) - Super Quality Windows - Windowmaker 2023 R2 SQL

Sales

- Customers
- Sales Quotes
- Sales Orders
- Return Orders
- Reports
 - Customer Transactions (Detail)
 - Customer Transactions (Summary)
 - History (Last 1 month)
 - History (Last 3 months)
 - History (Last 6 months)

Customer Transactions (Detail)

File Edit View Tools Help

Drag a column header here to group by that column

Customer No.	Customer	Order No	Reference	Order Value	Transaction Date	Invoice Total	Payment Received	O/S Order Value
XX02	John Doe (XX02)	TEST1	TEST1	1993.81	01/06/2027 11:48:54	0	200	1793.81
XX02	John Doe (XX02)	TEST1	TEST1	1993.81	01/06/2027 11:48:59	0	300	1493.81

Link to Saws

Windowmaker now links to RazorGage ST saw stops.

Refer to <https://razorgage.com/product-line/#saw-stops> for more details.

Enhancements to Products

Windowmaker Dealer Client

Dealers can now specify a Mark-up %. This Mark-up can be applied to Dealer Extras, if applicable.

The default Mark-up % for a quote/order can be overridden using Global Changes.

Tax On Base Price

Tax (A) 1: VAT/Std.

Tax (B) <None>

Mark-up % 50.0

Installation (DL01)

Analysis Code DL01

Tax 0: <Same as tax on Base Price> ☐ Apply Tax (B)

Cost

Rate/ Unit 0.00

Rate/ Length 0.00 / metre

Rate/ Area 4.0 / sq. metre

Price

Rate/ Unit 0.00

Rate/ Length 0.00 / metre

Rate/ Area 5.0 / sq. metre

Category	Description	Analysis Code	Tax
DL02	Freight	DL02	<None>
DL03	Lead & Lift	DL03	<None>
DL04			<None>
DL05			<None>

☒ Apply Markup ☐ Apply Tax (B)

Windowmaker SQL Sales Client

Synchronisation between Sales Client and Windowmaker SQL no longer replicates WMScheduleCapacity table. These help to improve the speed of synchronisation.

Issues Fixed

Sales - Costing Pricing - Special Terms - 28511

When there were Sales Lines in Quotes/Orders with zero cost and non-zero price, the price kept on increasing on opening the Special Terms form. This is now fixed.

Sales - Order Entry - Sales Lines - Calculation - 28538

The shape code for Semi-circular Glass was output as Segmental Arch when no profile surrounded the glass. The shape is now output correctly.

Sales - Order Entry - Sales Lines - Calculation - 10224

The effect of the 1/16" rounding for calculation of composite profiles is corrected to round the final sizes and not every adjustment applied on it.

Sales - Order Entry - Sales lines - Calculation - 31670

Frame and Sash Weight were incorrectly calculated when Transom / Mullion profiles with half mechanical joins ('I' or 'J') or where the reinforcements were calculated via composite profiles with reinforcement deductions applied. This problem is now fixed and might result in change of BOM if it depends on the Frame or Sash weight. However, the modified configuration is correct.

Sales - Reports - 27568

The 'Owner' drop-down was always greyed out for the 'WM_Sales Analysis' report. This is now fixed, and the combo box offers list of users as per the managerial hierarchy and defaults of the user using the report.

Manufacturing - Sub-batching - 29234

Sub-batching was not considering slots as having infinite capacity when 'Maximum Profiles per Slot' was 999. This is now fixed.

Manufacturing - Process - Link to Stock - 28980

The Filename for the file exported using 'WM_Link to Stock' report is now modified as '<Production Batch No>_WM_Link to Stock.STK' from the previous output of '<Production Batch No>.STK'. Anyone wanting to go back to the old naming convention can use the General Setting for 'Export Filename' that is now added to the report. The setting can be modified to say '<ProductionBatchNo>' or '<SiteID>_<ProductionBatchNo>' and saved. This will restore the old name.

Manufacturing - Process - Link to Other Optimizers

Users using Glass Optimizer post processor DLLs will need recompiled DLLs to use with WM 2023 R2 onwards. The older ones will not work.

Sales - Dealer Client - 20699

Dealer Client always showed Mixed Tax even when there is only one tax associated with the entire Quote/Order. This is now fixed.

Products - System - Rules - Part Matrix - 30214

A Part Matrix embedded within a rule was not picking the correct Format Code, leading to misbehaviour of controls within the Rules form. This is now fixed.

Database Schema Changes

New database tables have been added as listed below:

- WMHistoryCategory
- WMSalesHeaderAnalysis
- WMSalesHeaderTaxAnalysis
- WMProductExtraPricing
- WMProductBasePricing
- WMReportParameter

New database views have been added as listed below:

- ACT_WM_NActionsByAssignedTo
- ACT_WM_NActionsByDueDate
- SUR_WM_NOrdersDetails
- ORD_WM_NOrdersByStatusByOwners
- ORD_WM_NOrdersDetails
- ORD_WM_NQuotesByStatusByOwners
- ORD-WM_NHistory Last 1 month
- ORD-WM_NHistory Last 3 months
- ORD-WM_NHistory Last 6 months
- ORD-WM_NCustomer Transactions Detail
- ORD-WM_NCustomer Transactions Summary
- INS_WM_NOrdersDetails

Changes specific to database tables are as listed below:

Table	Column	Change
WMCustomerHistory	AssignedTo	Added
	DueDate	Added
	Priority	Added
	Status	Added
	ReminderDateTime	Added
	DepartmentID	Added
WMSalesLineTable	ItemType	Added
	ProductionQuantity	Added
	DespatchedQuantity	Added
	InvoicedQuantity	Added
	OtherInfo	Added
	ShortProductionNote	Added
	ShortInstallationNote	Added
	TaxAID	Added
	TaxBID	Added
	InternalUse1	Added
	PriceFlags	Added
	SourceType	Added
	LastModifiedBy	Added
	LastModifiedOn	Added
	InternalUse2	Added
	CostingVersionDate	Added
WMSalesHeaderTable	TaxValueA1	Removed
	TaxValueA2	Removed
	TaxValueA3	Removed
	TaxValueB	Removed
	TaxA1ID	Removed
	TaxA2ID	Removed
	TaxA3ID	Removed
	TaxBID	Removed

WMMessageQueue	RequestID	Added
	CreatedBy	Added
	RequestHeader	Added
	ResponseHeader	Added
	RequestTime	Added
	ResponseTime	Added
	GatewayName	Added
	CreatedByUserID	Added
	RequestData	Modified
	ResponseData	Modified
	MessageID	Removed
	UserName	Removed

New Triggers added as listed below:

View	Remarks
wm_tg_AfterUpdateWMSalesHeaderTable_UpdateWMSalesHeaderAnalysis	Added WMSalesHeaderTable after update

Changes to indexes are as listed below:

Table	Remarks
WMSalesHeaderAnalysis table	Added index idxWMSalesHeaderAnalysisSalesHeaderID