



Contents

Upgrading from older versions 2

What's New 3

 General Enhancements 3

 Order Entry..... 3

 History 3

 Glazing 4

Issues Fixed..... 4

 Windowmaker 2021 R2.2 SP2 4

 Windowmaker 2021 R2.2 5

Upgrading from older versions

When upgrading please also refer to the following documents for changes since your current version:

If your current version is	What's New	Release Notes
Windowmaker 2021 (v9.x)	https://windowmaker.com/en/pdf/windowmaker-2021-r9.x-release-document.pdf	
Windowmaker 2020 (v8.x)	https://windowmaker.com/en/pdf/windowmaker-2020-r8.x-release-document.pdf	
Windowmaker 2018 (v7.x)	www.windowmaker.com/EN/PDF/Windowmaker%202018%20(v7.x)%20What's%20New.pdf	www.windowmaker.com/EN/PDF/Windowmaker%202018%20(v7.x)%20Release%20Notes.pdf
Windowmaker 2012 (v6.x)	www.windowmaker.com/EN/PDF/Windowmaker%202012%20(v6.x)%20What's%20New.pdf	www.windowmaker.com/EN/PDF/Windowmaker%202012%20(v6.x)%20Release%20Notes.pdf

Windowmaker 2021 R2.2

Release Document



Windowmaker 2021 R2.2

What's New

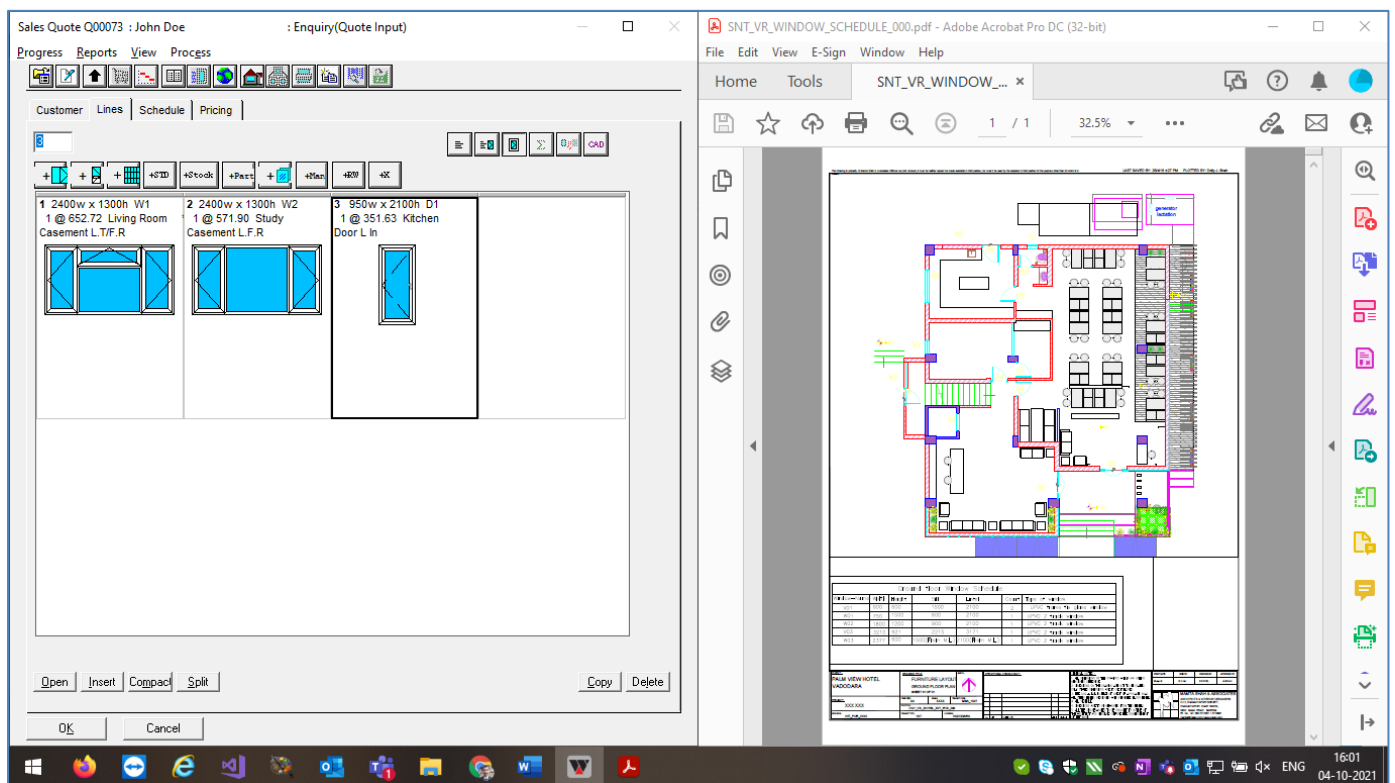
This section lists the important features/updates introduced in this release.

General Enhancements

Order Entry

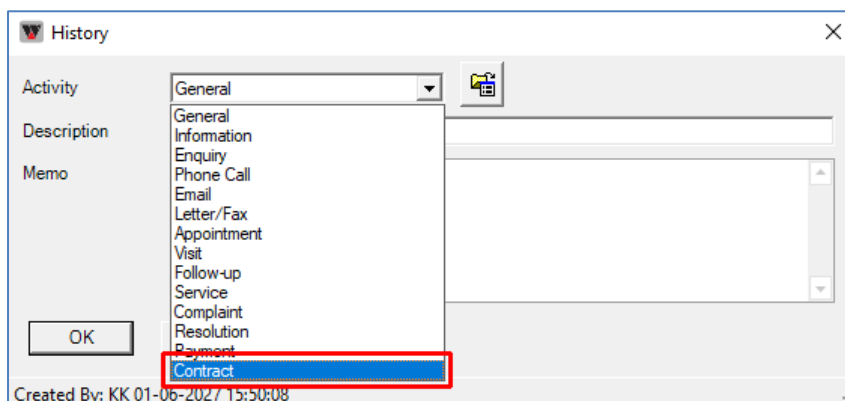
- Sales Line notebook
- Sales Header notebook

can now be resized/minimized, enabling Windowmaker to be run side-by-side with another application, especially on high resolution/wide screens. This helps improve efficiency.



History

A new Activity Type 'Contract' is now available for Customer/Sales Header History. This is useful e.g. to save copies of signed documents from customers.

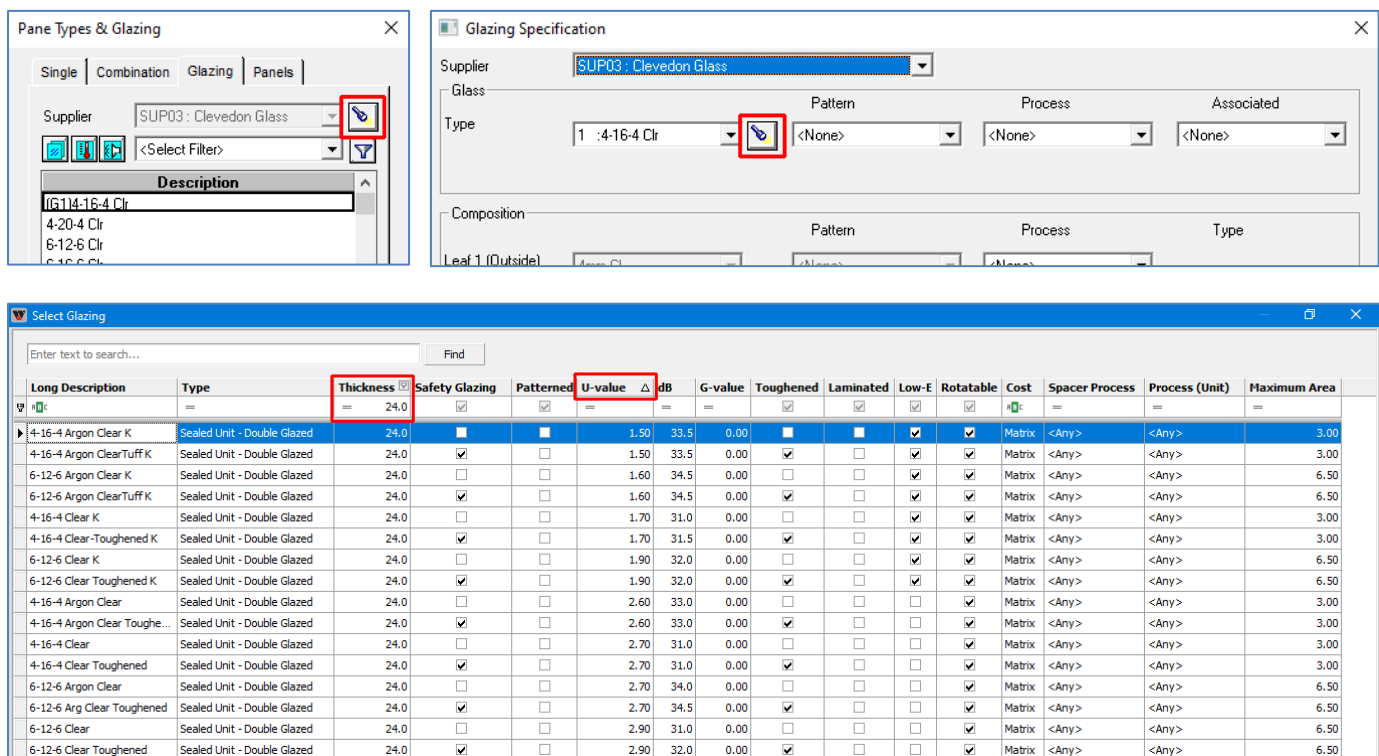


Glazing

The program now offers glass search facility for easy selection of glazing records during order entry. In the Search dialog:

- Only valid records, for all the selected panes, are listed considering
 - Width, Height, Area and Aspect Ratio limits, specified on the Glazing records
 - Security Glazing only, if Enforce Security Glazing is selected in Application Settings
 - Valid Glazing Thicknesses, specified on the System
- Search, sort and/or filter the glazing records on e.g. U-value, dB value, etc.

Search facility is also available on the Glazing Specification dialog.



The image contains three screenshots of the Windowmaker software interface:

- Pane Types & Glazing:** A dialog box with tabs for Single, Combination, Glazing, and Panels. The Glazing tab is active, showing a list of glazing records. A red box highlights the search icon in the top right corner.
- Glazing Specification:** A dialog box for specifying glazing details. It includes fields for Supplier (SUP03: Clevedon Glass), Glass Type (1 :4-16-4 Clr), Pattern (<None>), Process (<None>), and Associated (<None>). A red box highlights the search icon in the top right corner.
- Select Glazing:** A table showing a list of glazing records. The table has columns for Long Description, Type, Thickness, Safety Glazing, Patterned, U-value, dB, G-value, Toughened, Laminated, Low-E, Rotatable, Cost, Spacer Process, Process (Unit), and Maximum Area. A red box highlights the search icon in the top right corner.

Issues Fixed

Windowmaker 2021 R2.2 SP2

Sales - Order Entry - Customer Page - 15479, 15393

When 'Customer Selection from List' was deselected in Preferences, and the user tabbed away from the Customer Account no. edit line on the Sales Header notebook, the program would always ask for replacing the defaults from the Customer record even if there was no change of Customer. This is now fixed.

If the 'Customer Selection from List' was selected, a new customer record which was still in process of being set-up by another user, would appear in the Customer List, and would crash the program on trying to change the customer selection. This is also fixed.

Sales - Line Configuration - Options - 15395

The new Option-Answer dialog was not displayed with proper column widths on certain screen resolutions. This is now corrected.

Sales - Global Changes - 15570

Sales Header Mark-up checkbox was disabled on Global changes dialog. This is now corrected.

Sales - Convert Quote to Order - 15484

The 'Created By' for an Order that was converted from a Quote was not set to the user actually performing the process. This is now fixed.

Order Entry - History - 15360

Order History did not include Quote History. This is now corrected.

Administration - Data Conversion - 15296, 15590

The program sometimes hanged during data conversion or threw up an SQL Server related error while performing some conversion routines on certain SQL Editions. This is now fixed.

Windowmaker 2021 R2.2

Sales Order - Invoice - 7992

Standard WM_Invoice report did not print Extras Total when the Stored Price was different from the Current Price. This is now fixed.

Order Entry - Phased Orders - Transfer Quantity, Record Survey Sizes - 12665

When transfer of quantity was done from a Phased or Sub-order to any existing Sub-order, the 'Ordered' sizes for such lines did not appear on the 'Record Survey Sizes' form. This is now fixed.

Manufacturing - Remakes - Link to Saw - 14743

Cut angles were not correct in the case of designs using Reverse Butt-welds for Remake Sales lines. This is now corrected.

Stock - Records - 11682

In imperial data, while creating stock with type as 'Bar', the Stock Size, Minimum Reusable, and Maximum Wastage fields only allowed metric input. The measurement of Offcuts seen on the 'Offcuts' tab of the Stock notebook was also incorrect. These issues have been fixed.

ECatalogs - Rules - 15145

If a Size type 'Hidden and Changeable' option was set to a specific value in an Option related rule, the program did not allow setting all valid values within its defined range. This is now fixed.

Order Entry - Manual Sales Line - 15146

+Manual sales lines did not get saved with cost as 0. This is now fixed.