



Contents

Upgrading from older versions	2
What's New	3
General Enhancements	3
Windowmaker Helpfile	3
Dashboards	4
User Rights	4
Fixed Length Parts	5
Crucifix	5
Set-up - Parts	5
Enhancement to Options	6
Global Changes	6
Production Scheduling	6
Link to Stock	6
Link to Saw	6
Link to Working Centre	6
Breaking Changes	7
General Enhancements	7
Database Schema Changes	7
Issues Fixed	7
Windowmaker 2020 R1.1 SP1	7
Windowmaker 2020 R1.1	7



Upgrading from older versions

When upgrading please also refer to below documents for changes since your current version:

If your current version is	What's New	Release Notes
Windowmaker 2018 (v7.x)	www.windowmaker.com/EN/PDF/Windowmaker%202018%20(v7.x)%20What's%20New.pdf	www.windowmaker.com/EN/PDF/Windowmaker%202018%20(v7.x)%20Release%20Notes.pdf
Windowmaker 2012 (v6.x)	www.windowmaker.com/EN/PDF/Windowmaker%202012%20(v6.x)%20What's%20New.pdf	www.windowmaker.com/EN/PDF/Windowmaker%202012%20(v6.x)%20Release%20Notes.pdf

Windowmaker 2020 R1.1

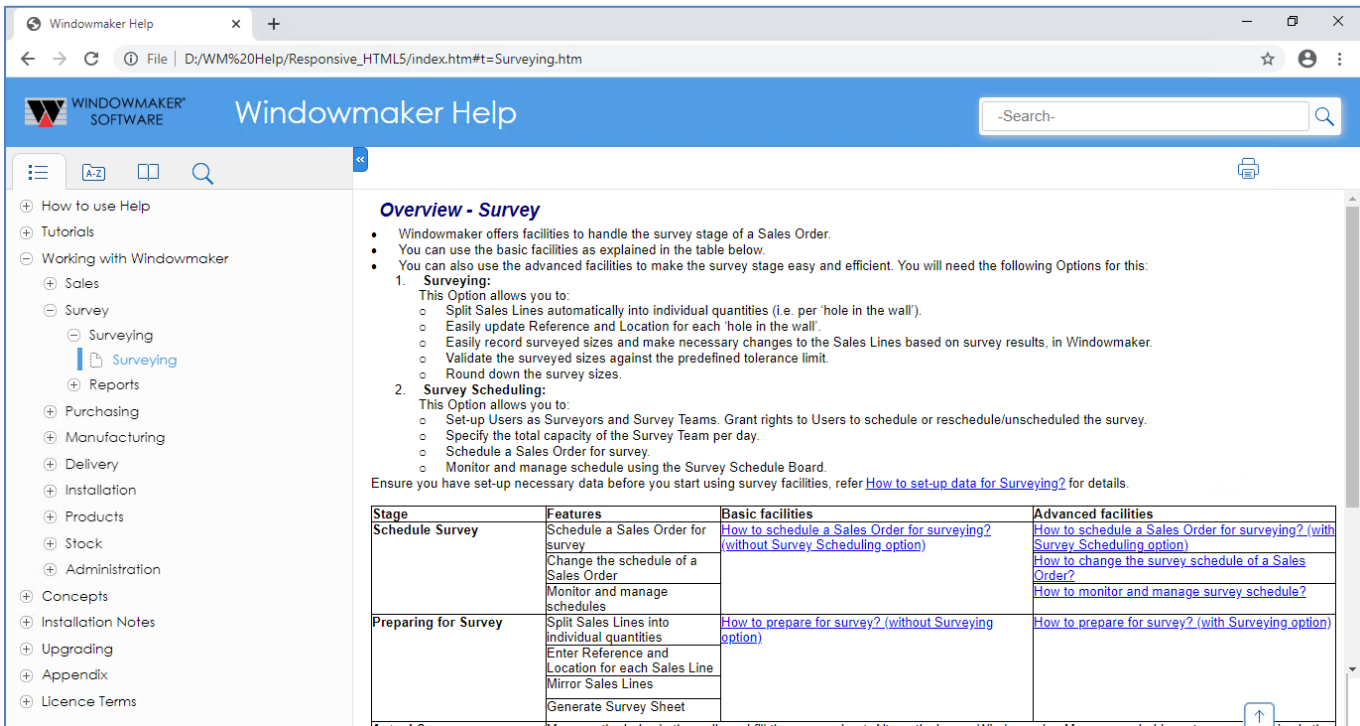
What's New

This section lists important features/updates introduced in this release.

General Enhancements

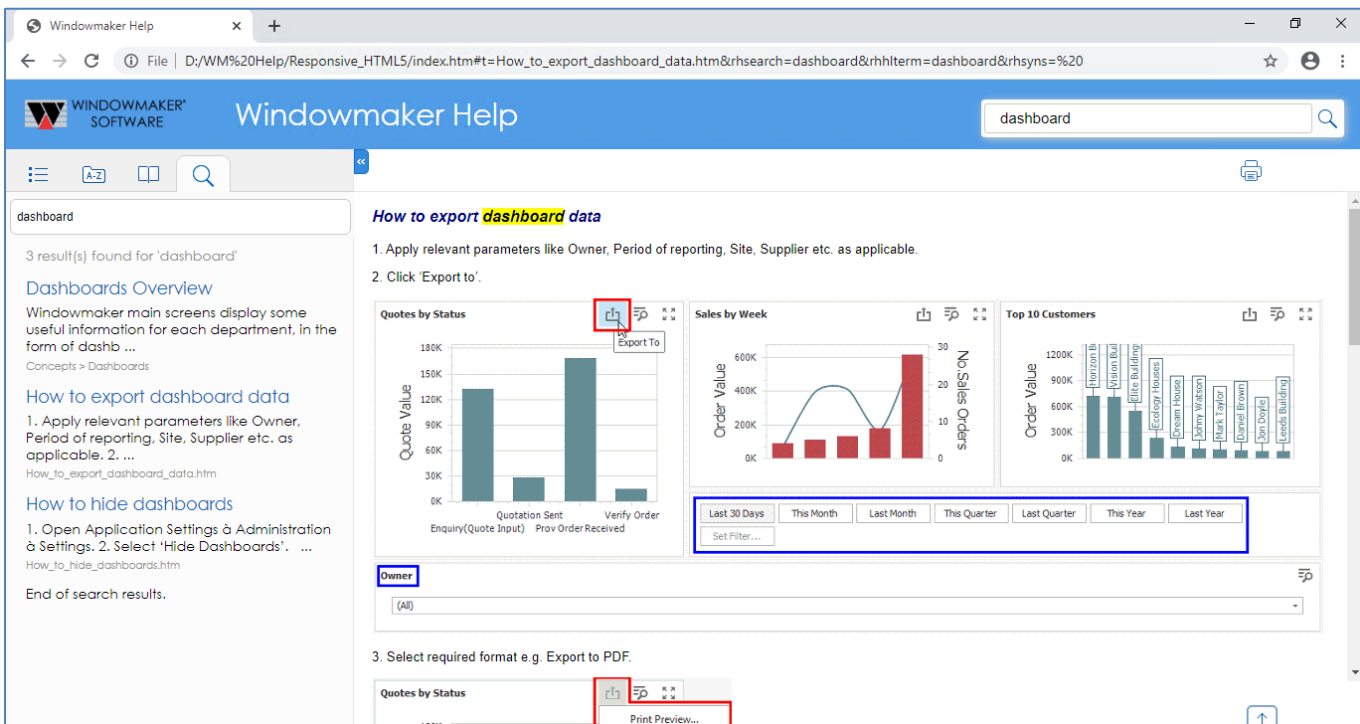
Windowmaker Helpfile

The Windowmaker helpfile is now in HTML format. This gives a better look and feel and can be opened in a browser.



The screenshot shows a browser window displaying the 'Windowmaker Help' page for 'Surveying'. The left sidebar contains a navigation menu with categories like 'How to use Help', 'Tutorials', 'Working with Windowmaker', 'Sales', 'Surveying', 'Reports', 'Purchasing', 'Manufacturing', 'Delivery', 'Installation', 'Products', 'Stock', 'Administration', 'Concepts', 'Installation Notes', 'Upgrading', 'Appendix', and 'Licence Terms'. The main content area is titled 'Overview - Survey' and includes a list of features and a table of facilities.

Stage	Features	Basic facilities	Advanced facilities
Schedule Survey	Schedule a Sales Order for survey Change the schedule of a Sales Order Monitor and manage schedules	How to schedule a Sales Order for surveying? (without Survey Scheduling option)	How to schedule a Sales Order for surveying? (with Survey Scheduling option) How to change the survey schedule of a Sales Order? How to monitor and manage survey schedule?
Preparing for Survey	Split Sales Lines into individual quantities Enter Reference and Location for each Sales Line Mirror Sales Lines Generate Survey Sheet	How to prepare for survey? (without Surveying option)	How to prepare for survey? (with Surveying option)

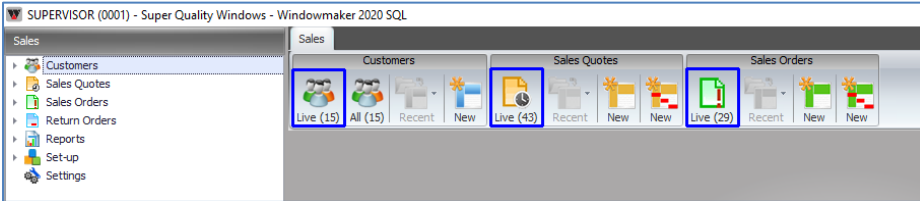


The screenshot shows a browser window displaying the 'Windowmaker Help' page for 'How to export dashboard data'. The search bar contains 'dashboard' and the results show 3 items. The main content area is titled 'How to export dashboard data' and includes a list of steps and three charts: 'Quotes by Status', 'Sales by Week', and 'Top 10 Customers'. The 'Quotes by Status' chart shows 'Quotation Sent' and 'Verify Order' with values up to 180K. The 'Sales by Week' chart shows 'Order Value' and 'No Sales Orders' over time. The 'Top 10 Customers' chart shows 'Order Value' for various customer names. A filter dropdown is set to 'Owner' with '(All)' selected. A 'Print Preview...' button is visible at the bottom.

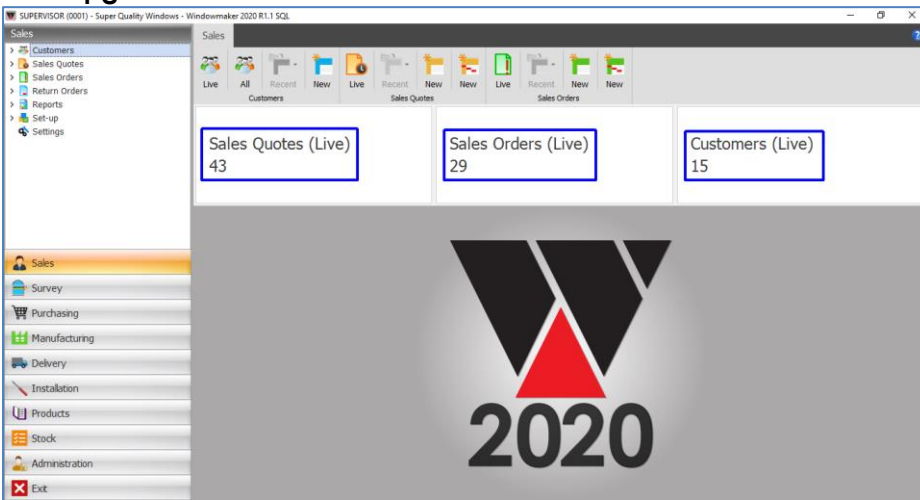
Dashboards

Hiding dashboards now hides only the charts; the counts are always displayed. This is done so that the counts visible in earlier versions are still available even if dashboards are hidden.

Earlier versions:



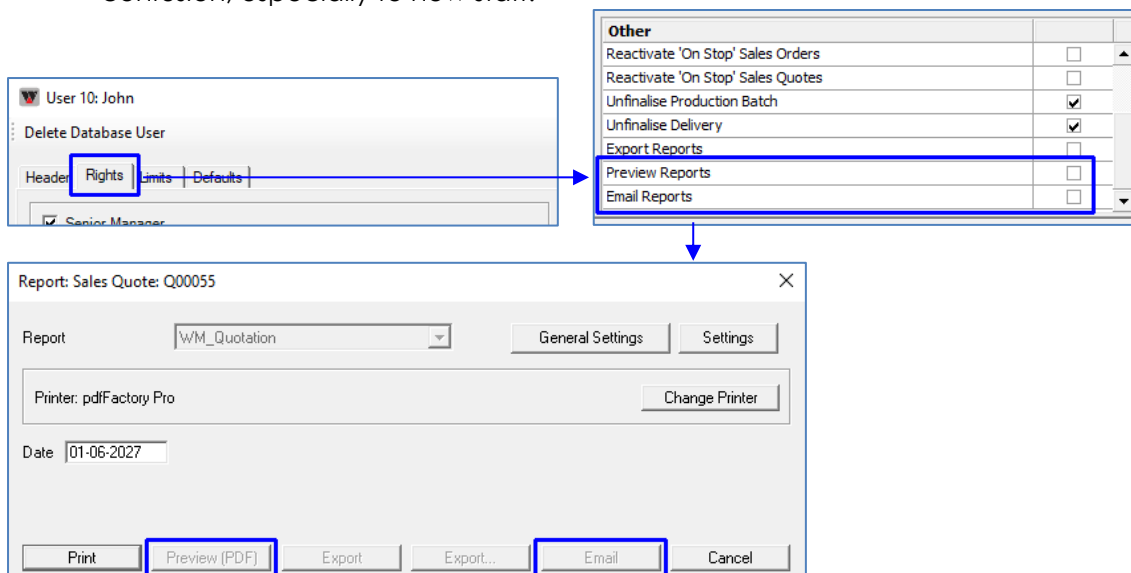
After upgrade:



User Rights

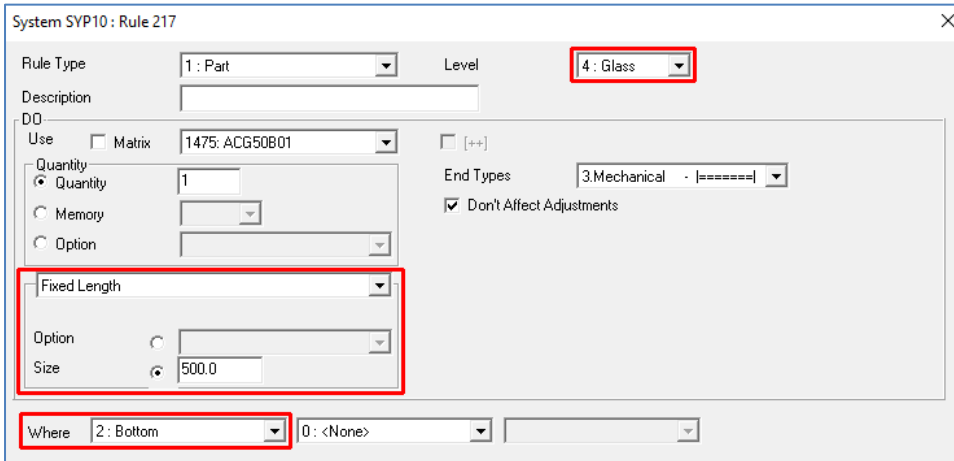
Windowmaker now provides User Rights to restrict previewing and emailing reports. This is useful in scenarios e.g.:

- Copies of reports sent to customers can be saved in History. Sales people could preview report PDFs, save them and send to customer. This activity is not recorded in History, preventing management to keep track of things.
- Emailing reports work only with desktop email applications. So, if you are using a web email application (e.g. gmail, yahoo) then you may not grant the Email Reports right to users. This will help avoiding confusion, especially to new staff.



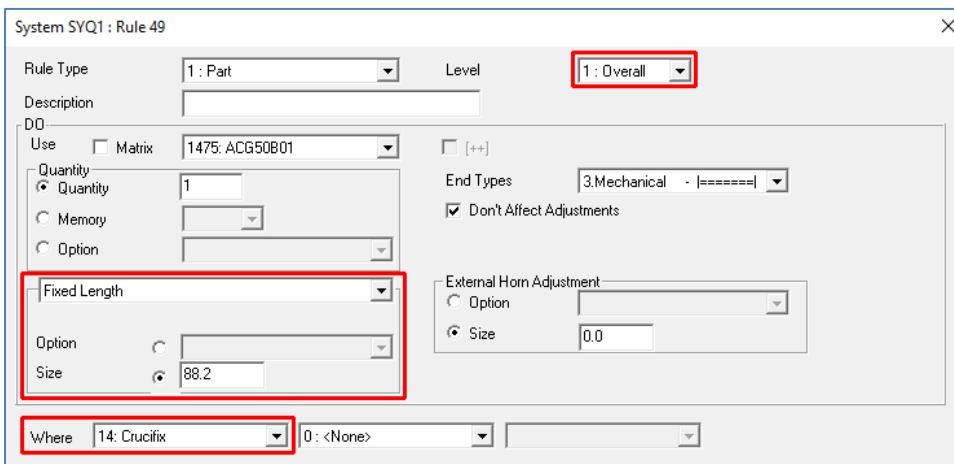
Fixed Length Parts

You can now calculate profile/reinforcement parts of fixed length, which are independent of the frame/pane sizes. It is treated as a normal part in all other respects e.g. included in optimised cutting instructions, stock management. This is useful for calculating such parts e.g. glazing support wedges.



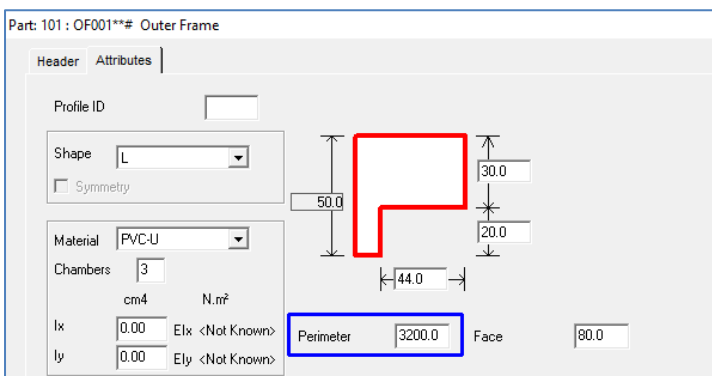
Crucifix

It is now possible to calculate profile/reinforcement/reel/unit parts at crucifix for Overall level. This is useful e.g. to calculate fixed length brackets for transom/mullion joins in curtain walls.



Set-up - Parts

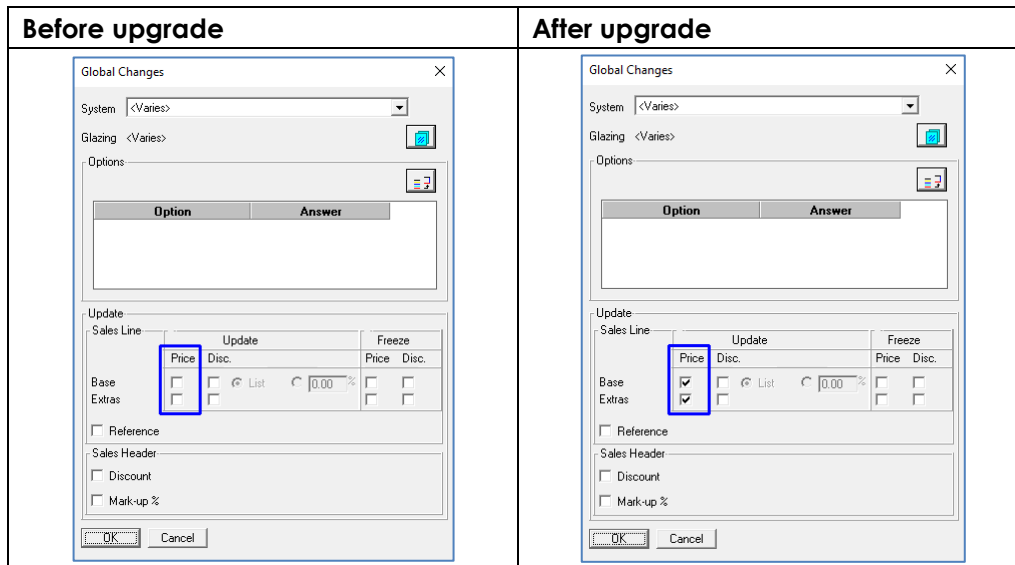
Part - Attributes now allow a maximum value of 3200 mm (125 63/64 inches in Imperial) for the Perimeter. Earlier this was limited to 1000 mm.



Enhancement to Options

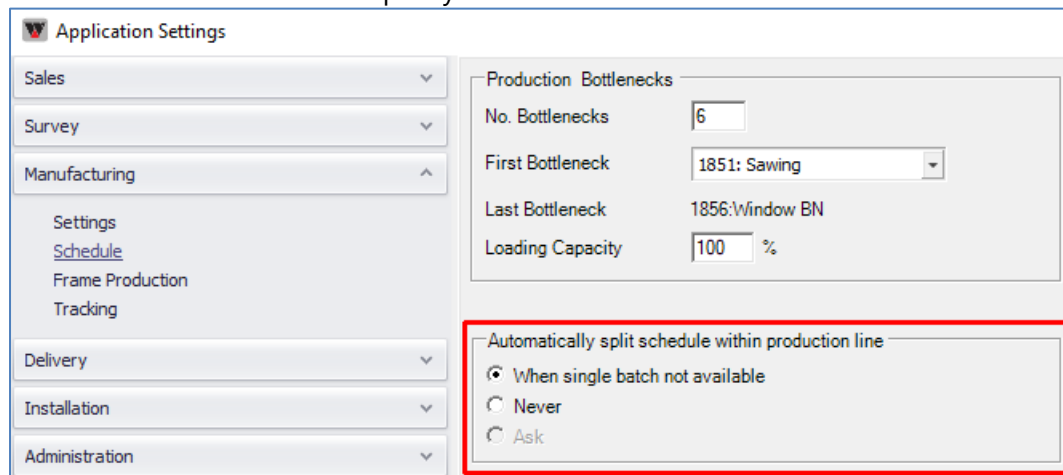
Global Changes

Doing Global Changes now updates Base & Extras Prices by default. For this, the 'Update Price' check boxes are selected by default. Earlier, the user had to select these manually. If one forgets to do so, then the changes were applied without the price getting updated.



Production Scheduling

Windowmaker now allows to specify whether an order should be scheduled across multiple production batches.



Link to Stock

Link to Stock now does not require creating stock records.

Link to Saw

Windowmaker now links to:

1. Graf Synergy 'Cut 500' cutting centre.
2. Dega (DECALUMA) Double Mitre Saw LJ2FJ-CNC-500.
3. Dega (DECALUMA) Glazing Bead Saw SJBWJ-CNC-3500.

Link to Working Centre

Windowmaker now links to Dega (DECALUMA) RUMBA3 working centre.

Breaking Changes

This section lists important behaviour changes, which are introduced in this version. These must be read in order to understand how they might affect your installation & upgrade process.

General Enhancements

Database Schema Changes

Changes specific to each table are as listed below:

Table	Column	Change
WMCustomerHistory	WMCustomerHistoryID	WMCustomerHistoryID type is changed to BIGINT from INT. The column type is now BIGINT.

Issues Fixed

Windowmaker 2020 R1.1 SP1

Order Entry | Mixable by Frame Options – 4349, 4470

Problems related to Incorrect functioning of 'Mixable by Frame' options are now resolved.

Order Entry | Sales Line | Status - 4210

Problem with Sales Line added after Order Status moved to 'Despatched' not appearing in Invoice document is now resolved. This affected unscheduled orders for Scheduling users.

Order Entry | Elevations - 3805

Problem with Elevations not getting copied correctly for Phased Quotes containing 'Property' Sales Lines is now resolved.

Windowmaker 2020 R1.1

Dashboards - 80644

The charts now reflect the correct statistics when multiple records are present in some weeks and single record in some other weeks.

Order Entry | Glass Sales line - 727

The problem with price not getting recalculated (even if it is not frozen) with change of Glass size is now resolved.

Order Entry | Elevations - 786

Selecting a constituent and then deleting or copying was not working correctly when the mouse was moved over other sales lines. This is now corrected.

Manufacturing | Optimization - 3118

The problem with incorrect piece quantity on Cutting List for parts that are "Pair Cut - Intelligently" is now corrected.

Tracking - 1763522

The Tracking Station number in the tracking file name is now 4 characters instead of 2 earlier. The polling station will just look for TRK<SSSS>*.TXT where SSSS is the station number.