



WINDOWMAKER®
SOFTWARE

WINDOWMAKER 2025

Release Version: 25 R2.0.0

Date : 21/05/2025

Contents

Upgrading from older versions.....	3
General Enhancements – Windowmaker.....	3
Sales Quote/ Order - History	3
Sales Line - Reference	3
Frame Production.....	4
Products - Export/Import Updates	4
Transfer Data.....	5
General Enhancements – Windowmaker Web	5
Sales Line - Glazing.....	5
Enhancement to Options - Windowmaker	6
Dealer Client	6
Costing Versions	6
Tracking	6
Excel-based Rules	6
Link to Saw.....	6
Enhancement to Options – Windowmaker Web	6
Bays & Bows	6
Dealer Client	7
Issues Fixed.....	7

UPGRADING FROM OLDER VERSIONS

When upgrading, please also refer to the following documents for changes since your current version:

If your current version is	What's New	Release Notes
Windowmaker 2025 (v25.x)	https://windowmaker.com/public/en/pdf/windowmaker-2025-rx-release-document.pdf	
Windowmaker 2024 (v12.x)	https://windowmaker.com/en/pdf/windowmaker-2024-r12.x-release-document.pdf	
Windowmaker 2023 (v11.x)	https://windowmaker.com/en/pdf/windowmaker-2023-r11.x-release-document.pdf	
Windowmaker 2022 (v10.x)	https://windowmaker.com/en/pdf/windowmaker-2022-r10.x-release-document.pdf	
Windowmaker 2021 (v9.x)	https://windowmaker.com/en/pdf/windowmaker-2021-r9.x-release-document.pdf	
Windowmaker 2020 (v8.x)	https://windowmaker.com/en/pdf/windowmaker-2020-r8.x-release-document.pdf	
Windowmaker 2018 (v7.x)	www.windowmaker.com/en/pdf/Windowmaker%202018%20(v7.x)%20What's%20New.pdf	www.windowmaker.com/en/pdf/Windowmaker%202018%20(v7.x)%20Release%20Notes.pdf
Windowmaker 2012 (v6.x)	www.windowmaker.com/en/pdf/Windowmaker%202012%20(v6.x)%20What's%20New.pdf	www.windowmaker.com/en/pdf/Windowmaker%202012%20(v6.x)%20Release%20Notes.pdf

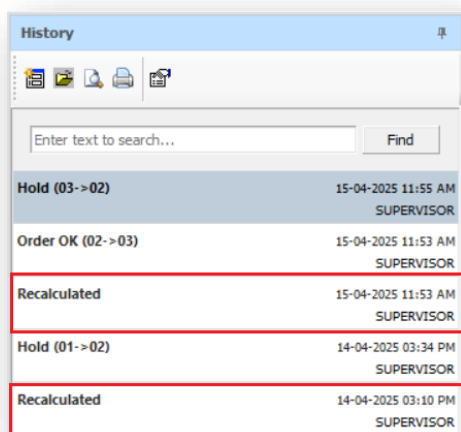
You may also refer:

Windowmaker Technical Requirements	https://windowmaker.com/en/pdf/windowmaker-technical-requirements.pdf
------------------------------------	---

GENERAL ENHANCEMENTS – WINDOWMAKER

SALES QUOTE/ ORDER - HISTORY

A History entry is now generated automatically during quote or order recalculation.



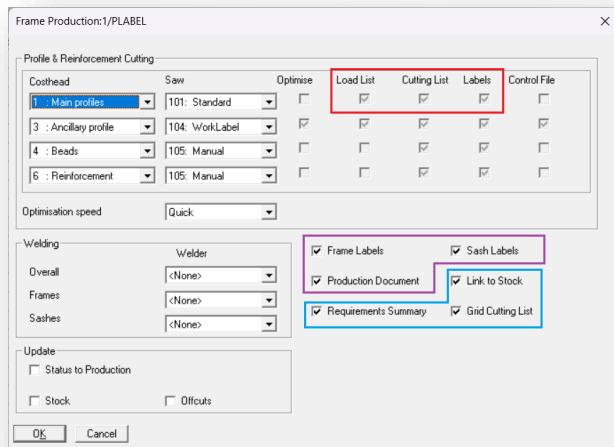
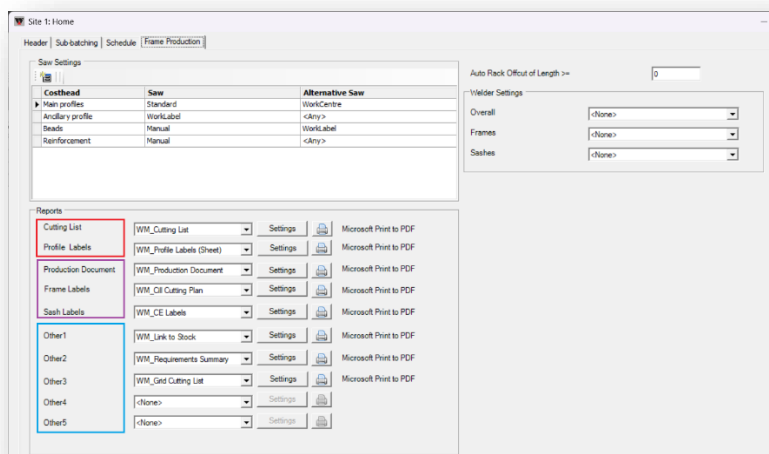
SALES LINE - REFERENCE

Windowmaker now automatically assigns the 'Reference' to new Sales Lines based on type (Window, Door and Other), reducing manual entry and errors.

By default, Sales Line Reference is auto assigned using the prefixes "W?" for windows, "D?" for doors and "G?" for all other lines, where '?' is a sequential number (e.g., W1, W2, W3). If a custom prefix is used e.g. "CODE1" is manually assigned to a window Line then subsequent window Lines will be assigned "CODE2", "CODE3", and so on.

FRAME PRODUCTION

Works instructions to be generated for production is now configurable per Site. More reports, with dedicated printer assignments, can be associated and automatically generated when a Production Batch is processed.



PRODUCTS - EXPORT/IMPORT UPDATES

Export Updates now include 'Costhead' and 'Unit Desc.' Columns. This gives users easier access to filter, review and update part costs based on Costhead and unit description.

These columns are for reference only and do not affect Import Updates.

Product ID	Product No.	Description	Long Description	Costhead	Inactive	Cost	Unit Desc
1184	UNS5280	Cill end Caps	Cill end Caps	76: ER Accessories	0	3.02	Each
1190	UNS5079G	Weather SealGasket	Weather SealGasket	74: ER Gaskets	0	2.8	Metre
1191	UNS5491G	Bubble Seal Gasket	Bubble Seal Gasket	74: ER Gaskets	0	2.83	Metre
1210	UNS3210	Thresh Conne Block	Thresh Conne Block	76: ER Accessories	0	2.83	Each
1211	UNS3515	Thresh Conne Block	Thresh Conne Block	76: ER Accessories	0	2.9	Each
1230	AA50	Adjustable angle	Adjustable angle	72: ER Ancl profiles	0	3.09	Metre
1536	AEC85	Cill end Caps	Cill end Caps	76: ER Accessories	0	2.9	Each
1537	AEC150	Cill end Caps	Cill end Caps	76: ER Accessories	0	2.58	Each
1538	AEC180	Cill end Caps	Cill end Caps	76: ER Accessories	0	2.97	Each
1541	VSW205	Cill AdaptorEndCap	Cill AdaptorEndCap	76: ER Accessories	0	3.1	Each
1542	JTA90I	Joint Trim	Joint Trim	71: ER Main profiles	0	3.1	Each
1543	JTA90E	Joint Trim	Joint Trim	71: ER Main profiles	0	3.1	Each
1544	JTA150	Joint Trim	Joint Trim	71: ER Main profiles	0	3.03	Each
1545	JTA135	Joint Trim	Joint Trim	71: ER Main profiles	0	2.49	Each
1546	JT150	Joint Trim	Joint Trim	71: ER Main profiles	0	3.08	Each
1691	ST1008	Gold Drip	Gold Drip	76: ER Accessories	0	3.02	Metre
1693	ST1009	Silver Drip	Silver Drip	76: ER Accessories	0	2.8	Metre
1709	EWS7573A	Int. Low Threshold	Int. Low Threshold	71: ER Main profiles	0	2.83	Metre

When the Costing Version option is **not** available in the licence, users can still update costs within Windowmaker using the following views:

Single Cost

<Option>

Cost editing functions as before, with audit trails generated upon saving changes.

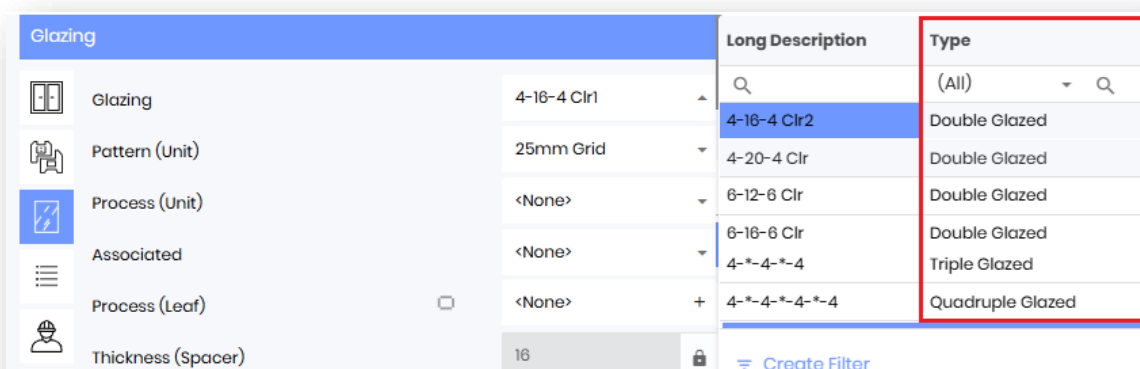
TRANSFER DATA

Windowmaker Cloud users can now generate a compressed (.zip) file containing both the required database (.DUP) and associated data folders in one step. This streamlines data transfer for support, backups or for data modification.

GENERAL ENHANCEMENTS – WINDOWMAKER WEB

SALES LINE - GLAZING

WM Web now includes a glazing type filter in the glass selection panel, making it easier to identify and select between Single Glass and various Sealed Unit options like Double, Triple, or Quadruple Glazed.



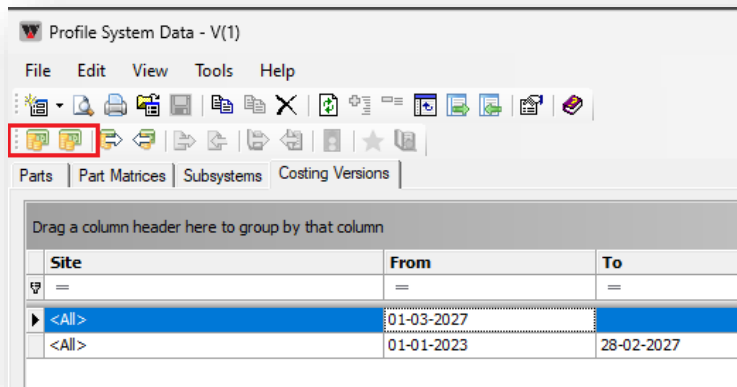
ENHANCEMENT TO OPTIONS - WINDOWMAKER

DEALER CLIENT

Dealer Managers can now modify Dealer Order lines until the fabricator schedules or releases it to production. This supports late-stage adjustments such as profile part substitutions without requiring rollback to earlier statuses.

COSTING VERSIONS

'Modify Cost by %' and 'Set Costs per Weight' now work for Costing Versions.



TRACKING

The Works Instructions screen for Sash and Glass stations can now display BOM details of up to 5 costheads.

EXCEL-BASED RULES

It is now possible to pass the Delivery State and the Delivery Country as inputs to an Excel System or Excel Subsystem, just like Delivery City. This helps any calculation based on delivery parameters.

LINK TO SAW

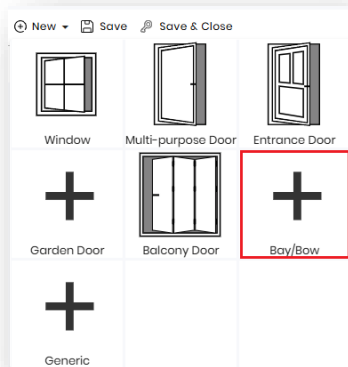
Windowmaker now links to Emmegi PRECISION TS2 TU/6 Saw.

ENHANCEMENT TO OPTIONS – WINDOWMAKER WEB

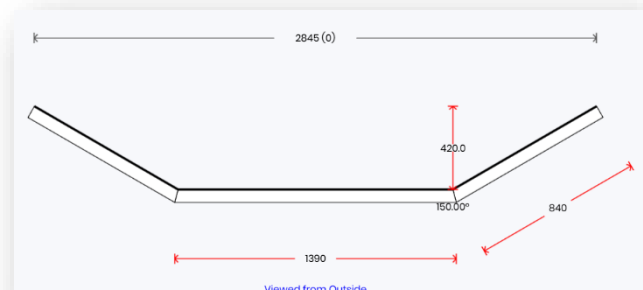
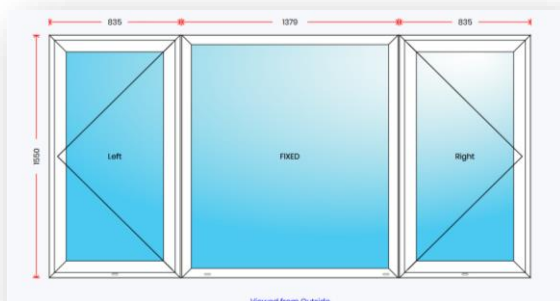
BAYS & BOWS

Creating Bay/Bow designs in Windowmaker Web is now easier and more intuitive than ever:

- New Bay/Bow item type added



- Auto-switching between Plan and Elevation views based on user actions.
- In-place editing of bay parameters (viz. Facet Widths, Facet Angles, Projection, Frame Depth) is now available from the plan view.



DEALER CLIENT

Dealers can now use Windowmaker Web for configuring, pricing and quoting.

ISSUES FIXED

SALES - LINE CONFIGURATION- GLAZING - 59844

The Glass thickness search functionality was not working for sizes in Imperial fractions in WM Web. This is now corrected.

SALES – LINE CONFIGURATION – OPTIONS - 59933

Sorting of Option answers on the answer drop down was not working in WM Web. This is now working.

SALES – LINE CONFIGURATION – DESIGN - 59935

Changing the system when forcing a change of design, did not refresh the Design description in WM Web. This is now corrected.

SALES – STANDARD LINES – SEARCH – 57733

Filtering Standard Product on width and Height did not support Imperial Values. This is now fixed.

MANUFACTURING-OPERATIONS-REMAKES – 60616

Users were unable to create remake orders for Stage suborders that only processed Glass. This is now fixed.

MANUFACTURING – TRACKING – WORK IN PROGRESS – 60614

Glass tracking stations were showing un-necessary Frame details on the Work in Progress screen, which were not even configured on the station. This is now fixed.

MANUFACTURING - LINK TO MACHINES - WELDERS - 65383

The un-necessary error 'Process not Complete' while processing batch with sales lines not requiring welding is now removed. This will only be prompted when there is an actual error is encountered with machinery links.

PRODUCTS – SYSTEMS- EXCEL SUB-SYSTEMS – 59211

Windowmaker Cloud users were unable to download the spreadsheet for 'Excel' system and sub-system. The download functionality has now been added for the same.

PRODUCTS- PARTS-COST MATRICES – 64552

The ability to increase the indices in the exported cost matrix spreadsheet and import the bigger matrix back, was lost. This is now re-instated.

SETUP – ADMINISTRATION- USERS – 65005

Reopening a user record of type Client - Sales Rep. with 'View only own' selected, showed this setting disabled. This is now corrected and 'View only own' is enabled.