



This document lists important behaviour changes, which are introduced in this version. These must be read in order to understand how they might affect your installation & upgrade process.

## Contents

<b>Pre-requisites for upgrading</b> .....	<b>1</b>
<b>General Enhancements</b> .....	<b>2</b>
Order Entry, Reports .....	2
Crystal Reports - UDFs .....	2
<b>Issues resolved</b> .....	<b>2</b>

## Pre-requisites for upgrading

When upgrading please also refer to below documents for changes since your current version:

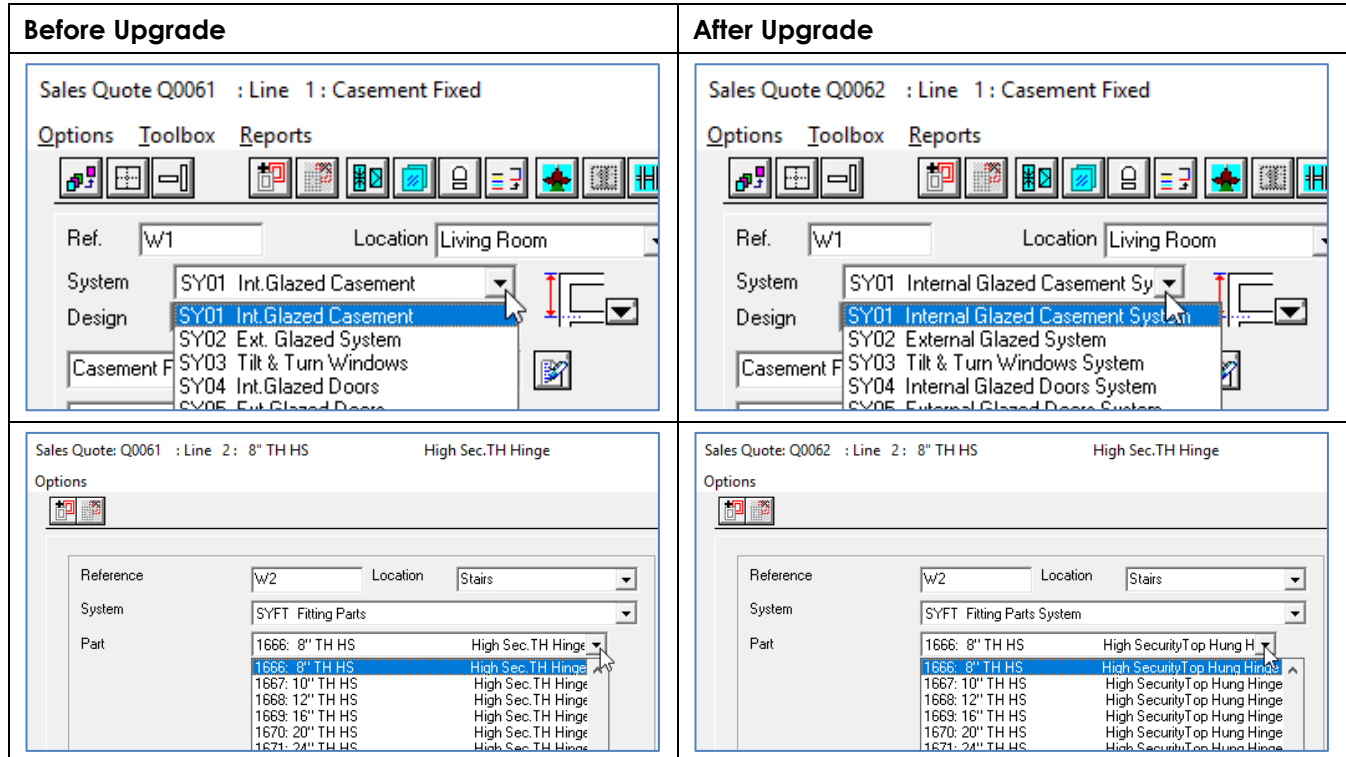
If your current version is	What's New	Release Notes
Windowmaker 2018 (v7.x)	<a href="http://www.windowmaker.com/EN/PDF/Windowmaker%202018%20(v7.x)%20What's%20New.pdf">www.windowmaker.com/EN/PDF/Windowmaker%202018%20(v7.x)%20What's%20New.pdf</a>	<a href="http://www.windowmaker.com/EN/PDF/Windowmaker%202018%20(v7.x)%20Release%20Notes.pdf">www.windowmaker.com/EN/PDF/Windowmaker%202018%20(v7.x)%20Release%20Notes.pdf</a>
Windowmaker 2012 (v6.x)	<a href="http://www.windowmaker.com/EN/PDF/Windowmaker%202012%20(v6.x)%20What's%20New.pdf">www.windowmaker.com/EN/PDF/Windowmaker%202012%20(v6.x)%20What's%20New.pdf</a>	<a href="http://www.windowmaker.com/EN/PDF/Windowmaker%202012%20(v6.x)%20Release%20Notes.pdf">www.windowmaker.com/EN/PDF/Windowmaker%202012%20(v6.x)%20Release%20Notes.pdf</a>
Windowmaker 5 (v5.x)	<a href="http://www.windowmaker.com/EN/PDF/What%27s%20New%20-%20Windowmaker%205.x.pdf">www.windowmaker.com/EN/PDF/What%27s%20New%20-%20Windowmaker%205.x.pdf</a>	

### General Enhancements

#### Order Entry, Reports

During order entry, Windowmaker now displays Long Description if specified; else Short Description, for:

- System List
- Parts List in '+Part' Sales Lines



#### Crystal Reports

- Standard as well as custom Crystal Reports now output Long Description of Systems.
- For '+Part' Sales Lines, Crystal Reports now output Long Description if specified; else Short description.

#### Crystal Reports - UDFs

Changes to Crystal Report UDFs:

UDF	Change
WMSaleslineSystemDescription1 ()	Now return the Long Description if present, else Short Description.
WMSalesHeaderPhotoFront ()	Now allows to suppress Glass and Profile Colour by setting proper Flag2. You may modify the Flag2 value of these UDFs in any custom Crystal report, to suppress profile and glass colours.
WMSalesHeaderPhotoFront1 ()	

### Issues resolved

#### Order Entry | Shapes - 1974002

The problem with the change of size freezing the program for hexagon shape is now resolved.

#### Order Entry | Property Sales line - 1870523

The Speed of the program while selecting and changing Property Products as well as entering their location during order Entry is now improved



### **Customer | Property Products - 1974112**

The problem of incorrect Costing, Pricing getting calculated for a Property product which contained Part or Manual Sales Lines with multiple quantity is now resolved.

### **Production | Offcuts - 1974094**

The limit for storing Offcuts is increased from 999 to 999999.

### **Production | Link to Welder - 1873108**

The problem with incorrect finish sizes being calculated for an 8 headed welder link when a threshold was applied is now resolved.

### **Production | Link to Welder - 1974272**

The problem with "Pre-fabricated" information missing in welder links for certain designs is now resolved.

### **Products | Migration - 1973886**

The problem with System Analysis code not getting set in Systems and Sales lines if non-migrated data is migrated to latest version is now resolved. Earlier, this resulted in the 'Link to Sales' functionality malfunctioning, and orders could not be invoiced.

### **Purchasing | Purchase Order - 1974184**

If a Purchase Order had more than 20 characters in Reference, the Purchase Order list did not fetch the PO details when trying to partially receive it. The problem is now resolved.

### **Crystal reports - 1974207**

Changing the 'Viewed from' setting and printing reports resulted in missing graphic details on reports. This problem is now fixed.

### **Crystal reports - 1973710**

Adding Status No. in report name for limiting report availability on Status was not working correctly for sub-orders, when viewing sub-orders list from within the Phased Order notebook. This is now corrected.

## **SP1**

### **Link to Working centre - 1975347**

Zero value is output as Half-notch position in 'Link To Working Centre' (WMW file) and \$ET (label) files, when a Frame Transom / Mullion meets other Mullion / Transom / Side profiles at a 'Butt-Weld' join. This is now fixed.