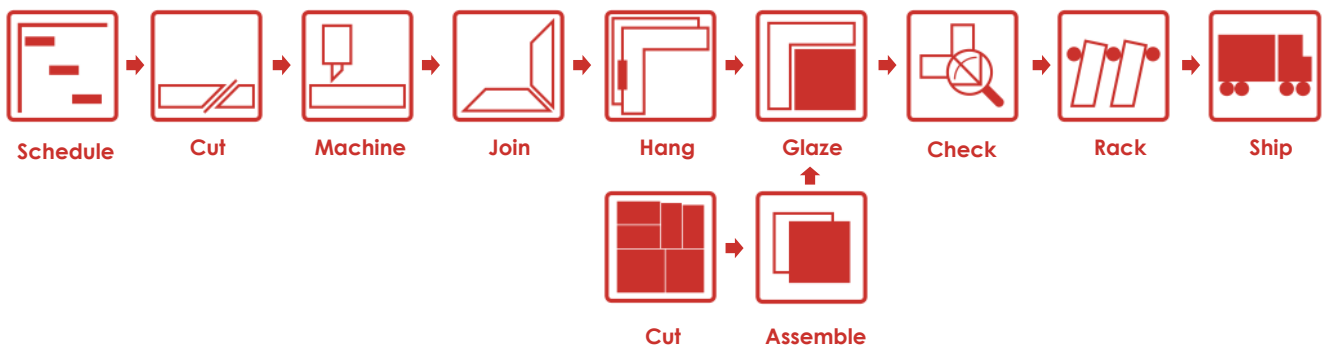




WINDOWMAKER SOFTWARE



The world's leading software for windows and doors



Contents

Introducing Windowmaker

The background to Windowmaker Software

The Windowmaker Configurator

The most advanced product configurator available

Driving better sales performance

Windowmaker Sales Clients help you sell quickly, accurately and profitably

Take control of operations

A single solution for the whole organisation

Automating production

Advanced solutions for lean manufacturing

Windowmaker Technology & Integration

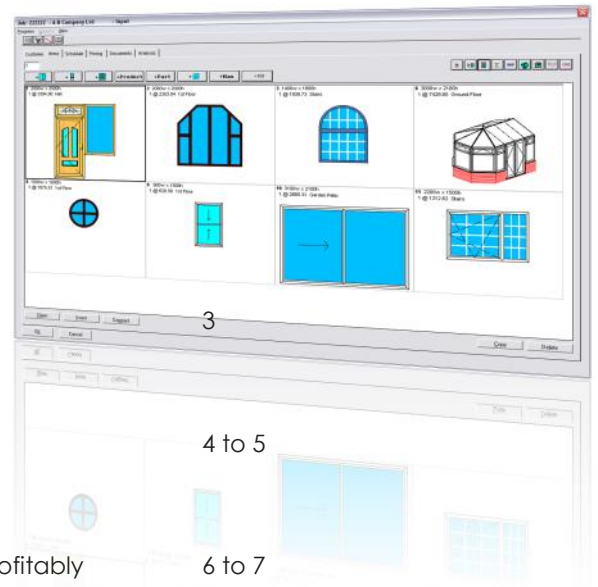
Delivering Business Intelligence to help you understand your business better

Windowmaker 2012

The biggest Windowmaker release this millennium

Choosing your product

The full Windowmaker product range





Introducing Windowmaker

More than 25 years experience

Windowmaker Software Ltd is one of the world's leading software companies supplying the window and door industry. With over 25 years of successfully developing and delivering market-leading solutions, Windowmaker has the knowledge and experience to provide customers with a competitive advantage.

More than 70 countries

Windowmaker has been sold to over 4000 window companies in over 70 countries. The need to meet the requirements of such a diverse set of customers has led the evolution of a product of unrivalled flexibility. A single adaptable solution is used for all company types in all markets and languages. Windowmaker software is truly a global company.

More than 40 developers

With an established international presence built over many years, Windowmaker Software has continually invested in the support and development team. Now numbering over 40 people, this includes teams working on new features and enhancements, as well as a comprehensive testing and support team to ensure the business critical software works first time, every time.

Microsoft Certified Partner

Windowmaker software Ltd was the first Microsoft Gold Certified Partner specializing in the window and door industry. This status recognizes the company's investment in training staff, many of whom are Microsoft Certified Professionals, as well as in proving competencies in relevant technologies such as Microsoft SQL Server, Microsoft Dynamics, web services etc..

Committed to quality

Windowmaker Software is committed to quality in both our products and our services. Our quality systems have conformed to ISO 9001 TickIT standards since 1994.



The Windowmaker Configurator

The most advanced fenestration configurator available

The Windowmaker Configurator drives the software - with powerful features and unlimited possibilities

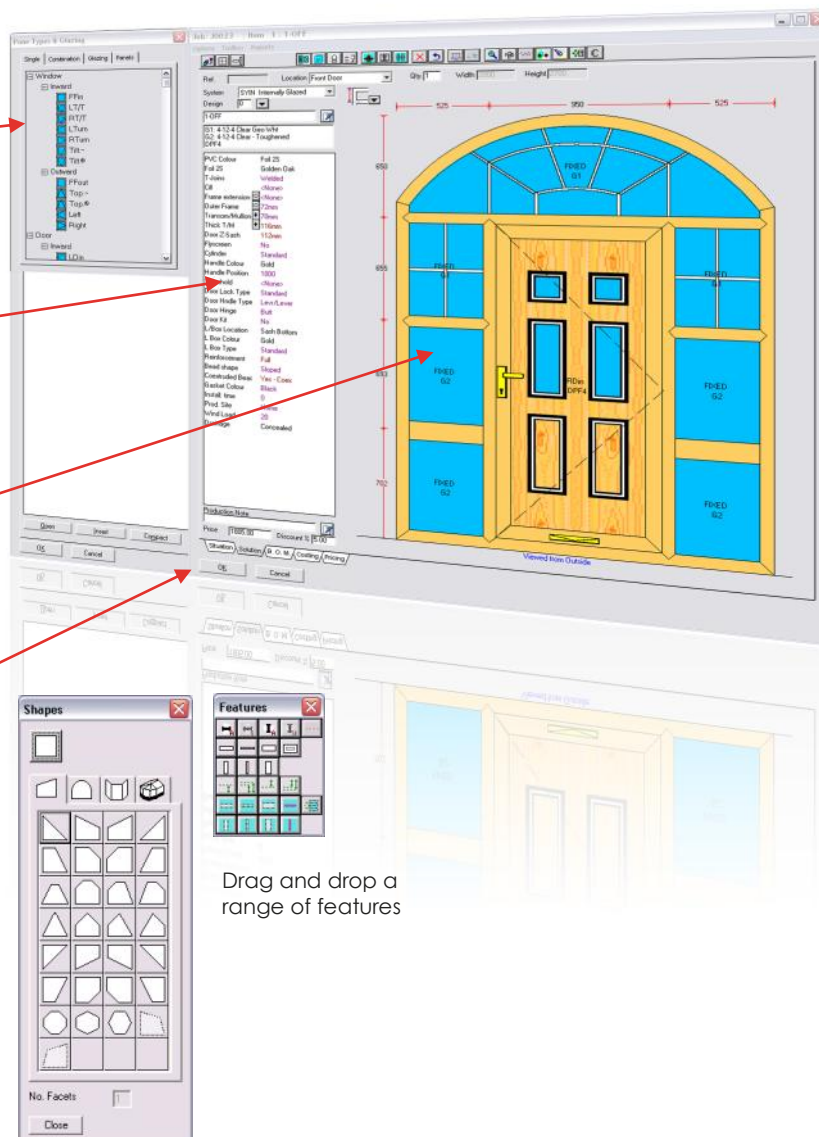
Drag and Drop functionality allows the user to quickly create and process simple designs from the options list

Choose from a **customised list of options**

Full **colour, detailed graphics** that clearly display the frames, glass and components during order entry

Windowmaker **instantly displays, and updates**, pricing

Use **Keyboard shortcuts** to reduce order processing time



Drag and drop a range of features



The Windowmaker Configurator enables the user to:

- ▲ Specify the shape and dimensions of the design to be created, and choose the system to be used (including from PVC, aluminium, wood, steel, composite and GRP profiles)
- ▲ Choose from standard designs, or create your own custom ones using a **drag & drop** interface to include features and pane types
- ▲ Perfectly **align and dimension** the finished elevation
- ▲ Choose from the options list to change specification (from colour to material) or add extras

Office based order entry staff can achieve high throughput using the keyboard. On the other hand, remote sales or survey staff can also work efficiently using just the stylus on a Tablet PC.

The **Windowmaker Rules** dynamically control the options and answers available - ensuring products that cannot be manufactured also cannot be configured and stored.

The fully scaled, detailed graphics can be used in many documents later on, from Quotes to Works Instructions, reducing mistakes and producing impressive sales material.

Description	Qty.	Size	Where	Cost
4-12-4 Clear Geo Wht	1	1890w x 572h 9	FIXED	55.34
4-12-4 Clear Geo Wht	1	[63,63,x=1127]		
4-12-4 Clear Geo Wht	1	440w x 615h	FIXED	1.06
4-12-4 Clear - Toughened	1	440w x 615h	FIXED	1.06
4-12-4 Clear - Toughened	1	440w x 600h	FIXED	11.85
4-12-4 Clear - Toughened	1	440w x 600h	FIXED	11.85
4-12-4 Clear - Toughened	1	440w x 602h	FIXED	11.33
4-12-4 Clear - Toughened	1	440w x 602h	FIXED	11.33
Door Panel-Full OFF4	1	740w x 1812h	RDin	0.00
Outer Frame 0L072-WHT	1	2382w	0.0v/v/ 0.0	6.81
Outer Frame 0L072-WHT	1	[1184]		
Outer Frame 0L072-WHT	2	2000w	v/v	5.73
Outer Frame 0L072-WHT	1	2150h	v/v 16.4	6.15
Outer Frame 0L072-WHT	1	2150h	16.4v/	6.15
Transom/Mullion T T7070-WHT	1	1920w	<>	5.10
Transom/Mullion T T7070-WHT	2	480w	<>	2.60
Transom/Mullion T T7070-WHT	2	2013h	<>	10.66
Transom/Mullion T7116-WHT	2	470w	l j	3.63
Door 2-Sash S2112-WHT	2	938w	v/v	0.59
Door 2-Sash S2112-WHT	2	2001h	v/v	18.24
Reinforcement 300042	2	740w	RDin	1.34
Reinforcement 300042	2	1912h	RDin	3.28
Fabrication Labs® Reinforce	60			12.00
Weather Seal 000046	1	11420		2.39
Door Seal 000030	1	1792		0.85
Reinforcement 300036	1	2417w		1.77
Reinforcement 500036	1	[1184]		
Reinforcement 300036	1	1891w		1.39
Reinforcement 300036	2	2113h		3.11
Reinforcement 300043	1	1851w		1.71
Reinforcement 300043	2	483w		0.62
Reinforcement 300043	2	1920h		3.53

Bill of Materials

Windowmaker Options

- ▲ Angled Shapes
- ▲ Arched Shapes
- ▲ Georgian & Leaded
- ▲ Panels
- ▲ Standard Products
- ▲ Bows & Bays
- ▲ Curtain Walling
- ▲ Conservatories

For more information, visit:
www.windowmaker.com/configurator

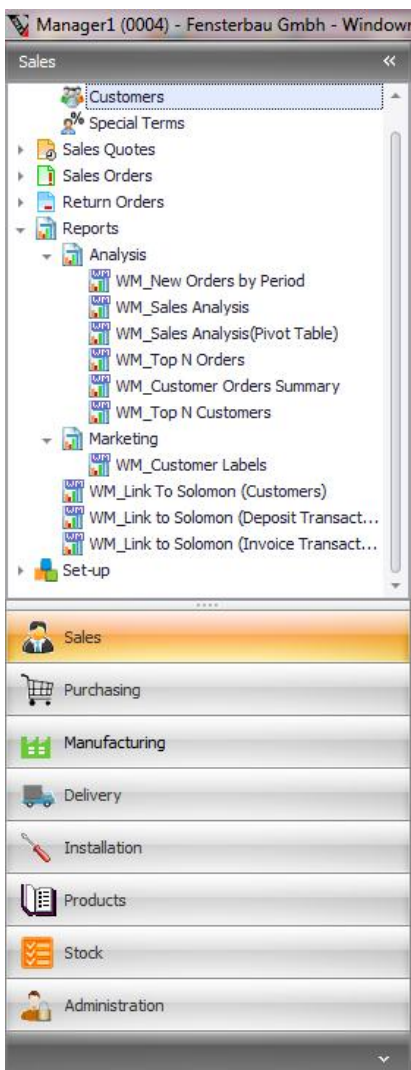


Driving better sales performance

Windowmaker Sales Clients help you sell quickly, accurately and profitably

The starting point for any successful business is sales—and Windowmaker provides you with the tools to maximise your sales performance.

Whether it is providing Windowseller to your resellers and Windowmaker Sales Client to your own sales staff or surveyors, Windowmaker has the flexibility and features you need.



When using Windowmaker internally, it is available on a range of machines - from laptops & PCs to thin clients.

Standard Clients provide full functionality, while **Tracking Clients** are designed for specific job roles.

If used remotely, Windowmaker can manage a range of requirements for the mobile workforce.

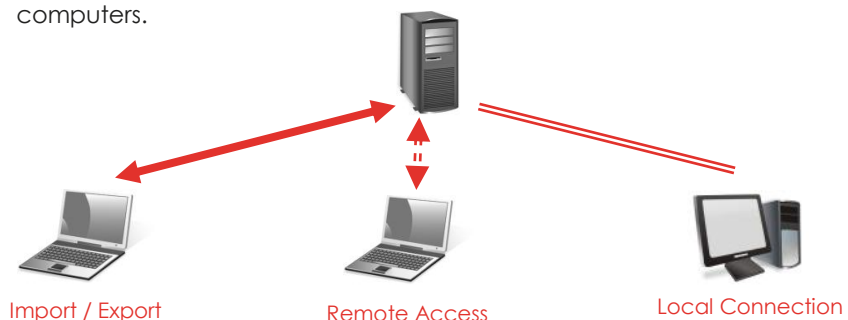
The **Sales Client** can be used to access Windowmaker directly, with features designed just for sales roles.

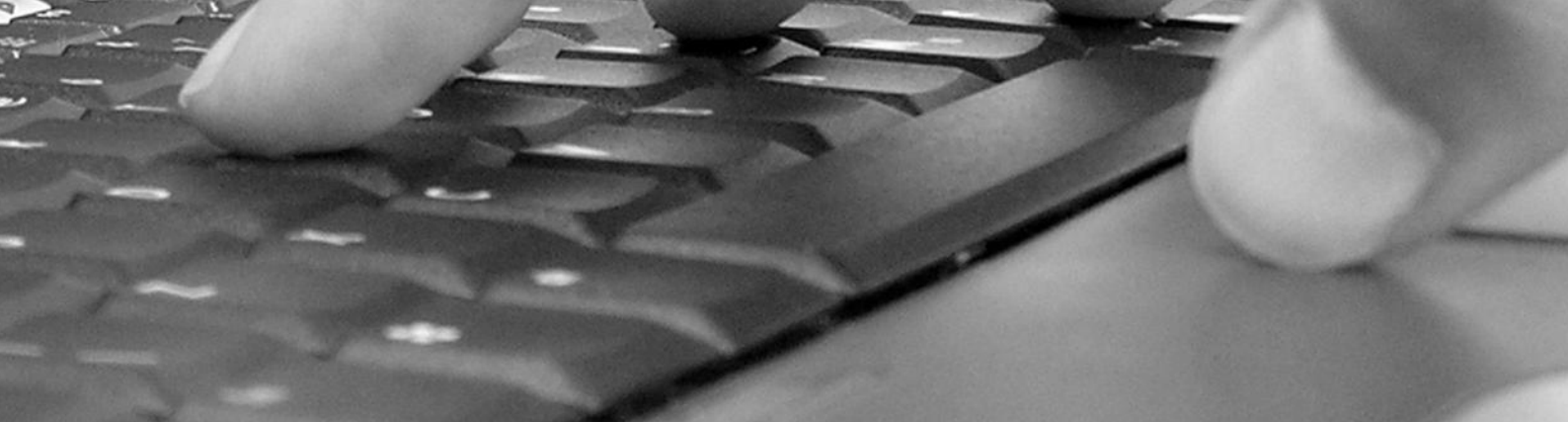
Alternatively, the **Remote Sales Clients** enable Sales Staff to work offline and replicate over the internet, or access the Head Office server directly to create Sales Quotes or enter Sales Orders.

For Dealers, **Windowseller** provides the ultimate Sales tool with all the benefits of Windowmaker integration.

Windowseller customers can export Orders directly to Windowmaker manufacturers, and receive exact product, system and pricing information in return.

It is also possible for manufacturers to host Windowseller on central servers. Dealers can choose between remote access or synchronising their own computers.





Sales Documentation allows you to create stunning graphical documents, from Quotations and Order confirmations to invoices, with the ability to include corporate branding, bought in products and one-off charges.

Design your own stationery, with default documents

Prices automatically calculated from the price list

Clear, scaled drawings

Include bought in products

Add one-off charges, and define what options are included

Quotation

MNC Company Ltd.
12 Church Street
Hastings
West Sussex
BN1 5PW
UK
Tel: +44 (0)1323 5556 Fax: +44 (0)1323 5556
Email: info@mncwindows.com

Ardent Windows
12 Church Lane
Bloxdown Drive
Crawley
TN11 3PB

Quote No.	Date	Customer Ref.	Responsible
J254	12/11/2012	PTW5	Chris

Line	Desc	Qty	Rate	Disc. %	Amount
0003	D1 Kitchen Recessed L 950w x 2,100h G117 PVCColour Fall 25 Light Oak	1	1,178.51	0.00	1,178.51
	Price - Extra Fall Surcharge				500.32
	Extra Subtotal				500.32
0004	W3 Living Room Vert Slide Standard 1,000w x 1,800h 4-16-4 Clear PVCColour White	1	807.47	0.00	807.47
0005	D17 South Wall Gate GT305	1	1,750.00	0.00	1,750.00
	Total				£ 7,545.02
	VAT		20.00%		£ 1,469.00
	Grand Total				£ 8,814.02

Windowmaker Options

- ▲ Pricing via Mark-Up & Cost Plus
- ▲ Pricing via Price Lists & Matrices
- ▲ Pricing Extras
- ▲ Customer Discounts
- ▲ Global Changes
- ▲ Optimised Costing
- ▲ Commercial Projects
- ▲ Link to CAD software
- ▲ Sales Order Imports
- ▲ Order Tracking

For more information, visit:
www.windowmaker.com/sales



Inventory Control

Windowmaker can link to ERP inventory software, but also offers its own integrated multi-site **Inventory Control**. All transactions can be posted manually, but most can be automated, with e.g. Allocations generated via Production Scheduling and Issues generated either by a production batch being released to manufacture or by a frame or sash being tracked at a station in the factory.

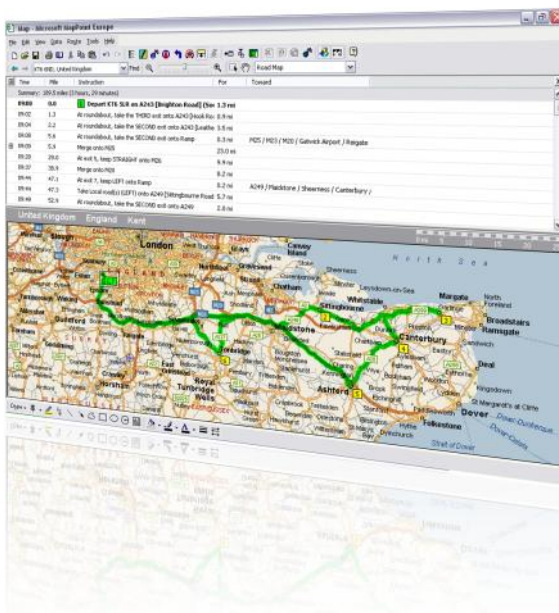
Stock reordering based on accurate data and early identification of the requirements for scheduled Sales Orders usually allow manufacturers to maintain lower inventory levels and free up capital.

When used in conjunction with other modules, Windowmaker Inventory reporting provides valuation figures for Inventory, Work In Progress and Finished Goods. Profile Offcuts are managed as part of WIP.

Shipping

When production is complete, shipping paperwork can be printed based on the frames and ancillaries that will actually ship.

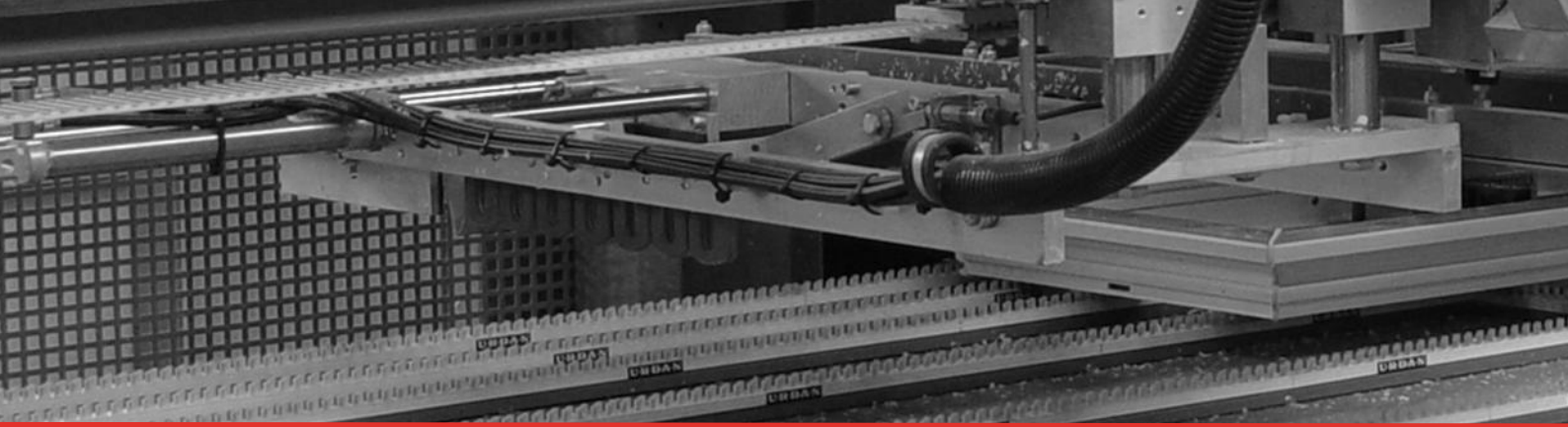
For shipping route optimization, data can be output to Microsoft MapPoint



Windowmaker Options

- ▲ Purchase Scheduling
- ▲ Purchase Ordering
- ▲ Electronic glass orders
- ▲ Production Scheduling
- ▲ Delivery Scheduling
- ▲ Installation Scheduling
- ▲ Multiple Locations
- ▲ Stock Control / Link to Stock
- ▲ Link to Sales

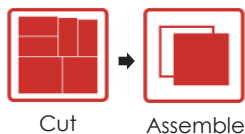
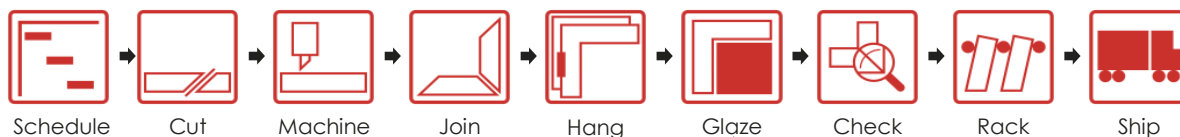
For more information, visit:
www.windowmaker.com/operations



Automating production

Advanced solutions for lean manufacturing

Once Sales Orders have been created, and batched - either manually or with scheduling - Windowmaker then processes them through production, with a range of optimisation options and the ability to automate your manufacturing.



Optimization

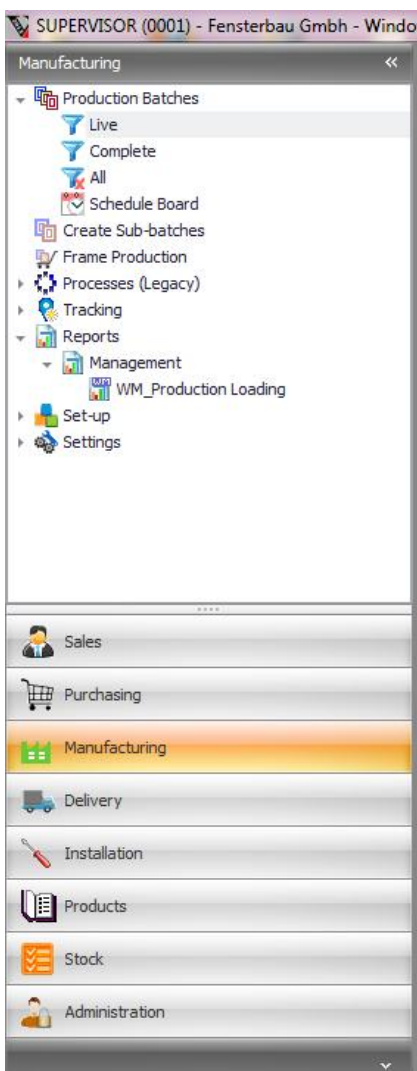
Once Sales Orders have been batched/scheduled for production, Windowmaker has a range of features to maximise your efficiency:

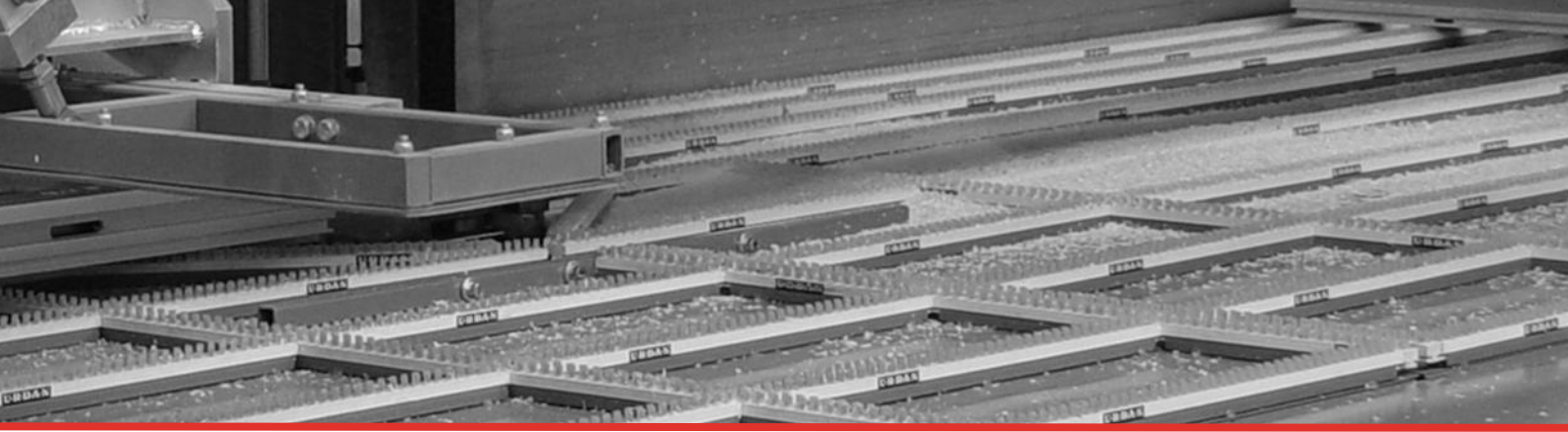
- ▲ Create optimum production sequences
- ▲ Use Sub-batching to further improve production output
- ▲ Use Pairing and Material Optimisation with Reusable Offcuts to minimise waste
- ▲ Calculate machining requirements

Works Instructions

With the orders passed through into Production, Windowmaker can provide a variety of Works Instructions, including:

- ▲ Machine Links, to a variety of saws, working centres, welders and glass cutting tables
- ▲ Labels and reports, which can be fully customised to your requirements including text and graphics
- ▲ Windowmaker Tracking displays, which provide comprehensive Works Instructions for each station operator
- ▲ The Tracking displays can show dynamically re-sequenced Work To Lists, to enable staff to react immediately to changed priorities





Windowmaker Options

For Frame Production

- ▲ Sub-batching
- ▲ Profile Pairing
- ▲ Bar Optimisation
- ▲ Reusable Offcuts
- ▲ Sash & Profile labels
- ▲ Tracking
- ▲ Link to Saws
- ▲ Link to Working Centres
- ▲ Link to Welders
- ▲ Link to Hinge Machines

For more information, visit:
www.windowmaker.com/frameproduction

Windowmaker Options

For Glass Production

- ▲ Optimaker
- ▲ Sealed Unit Pairing
- ▲ Cutting Instructions
- ▲ Optimised Labels
- ▲ Multiple Inventory Sizes
- ▲ Reusable Glass Offcuts
- ▲ Multiple Glass Tables
- ▲ Toughened Glass Report
- ▲ Link to Cutting Tables
- ▲ Link to Third Party Glass Optimisers

For more information, visit:
www.windowmaker.com/glassproduction



Tracking

With Windowmaker Tracking Screens, you can manage the status of the entire production process.

- ▲ Tracking Screens capture data regarding the progress of frames, sashes and glass through the factory—together with statistics on standard and actual performance by station, person, date and time.
- ▲ The Tracking screens also provide clear Works Instructions including dynamically reprioritised Work-To Lists. Labels can be printed at these screens.
- ▲ Reports can include comprehensive management information, including labor times and performance & problem statistics

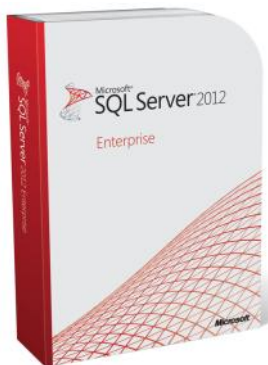




Windowmaker Technology & Integration

Delivering Business Intelligence to help you understand your business

As a Microsoft Partner with a large development team, Windowmaker Software can deliver solutions that truly exploit the power of the latest technology. The configuration available within Windowmaker, supported by powerful third party tools, enables you to get more from your software.



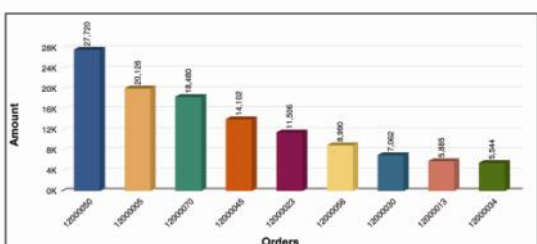
- ▲ Windowmaker uses **Microsoft SQL Server** as the underlying database, taking advantage of the support that this provides for exporting data and synchronising with other software
- ▲ For example, XML data can be exported to other packages, or SQL Triggers used to simplify integration with third party software.
- ▲ Windowmaker can also offer **web-services** to access the central SQL database, so that the data is available to a variety of devices, including **Microsoft Windows Mobile PDAs** and **Smartphones**.
- ▲ The 'User Data' facility allows fields to be added to the Windowmaker database and then accessed directly from within Windowmaker, further enhancing the customer-specific customisation available.

- ▲ In Windowmaker ERP seamless integration into **Microsoft Dynamics** applications is available, enabling a single ERP solution to be used across the organisation
- ▲ For example, you can create Windowmaker Orders from within the Microsoft Dynamics order entry process

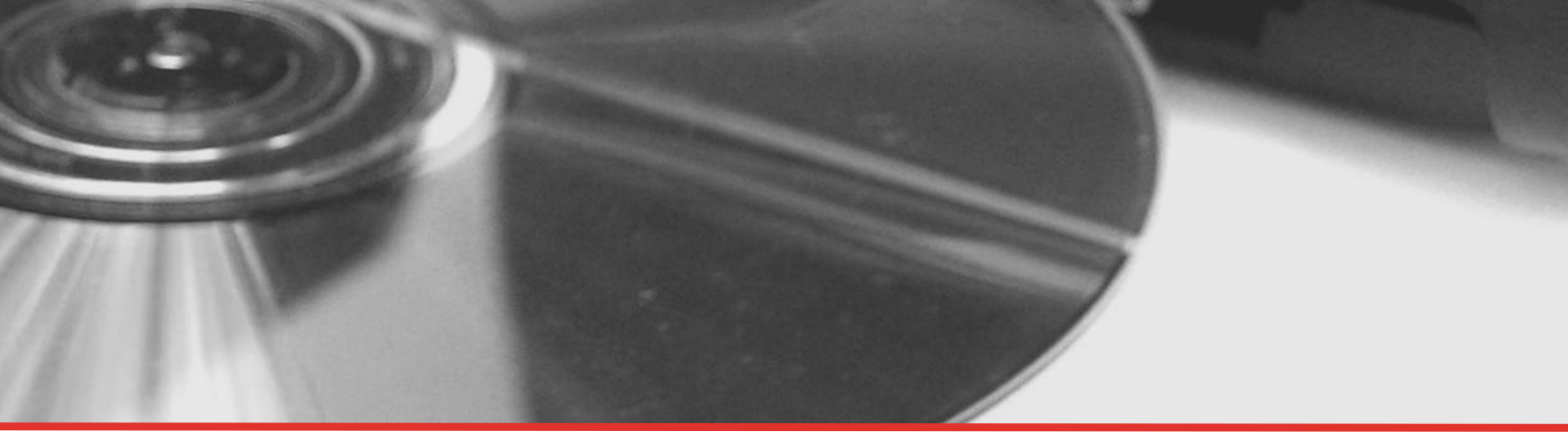


Top 10 Orders MNC Company Ltd. 02/11/2012

Order	Customer	Amount	Amount LCY	Cost	Contrib. %
12000050	Swan Windows	27,720.00	27,720.00	9,323.10	18,396.90 66.37
12000005	Ardent Windows	20,126.32	20,126.32	12,859.96	7,266.36 36.10
12000070	Choice Windows & Conservatories	18,480.00	18,480.00	6,215.40	12,264.60 66.37
12000045	Easigaze Ltd	14,102.00	14,102.00	7,897.60	6,204.40 44.00
12000023	Jubilee Windows Ltd	11,505.90	11,505.90	7,959.30	3,546.60 30.82
12000056	A B Company Ltd	8,990.40	8,990.40	5,899.66	3,090.72 34.38
12000030	RD Windows	7,961.88	7,961.88	4,061.04	3,900.84 42.69
12000013	Style Glaze Windows	5,884.90	5,884.90	3,559.20	2,325.70 39.52
12000034	Ardent Windows	5,544.00	5,544.00	2,271.80	3,272.20 59.02
TOTAL		119,415.40	119,415.40	60,047.08	59,368.32 49.72



- ▲ **Crystal Reports** technology is used extensively in Windowmaker, meaning advanced reports are available as standard with the capability for unlimited custom reports.
- ▲ Standard Windowmaker Reports throughout the software can be customised, filtered according to context including user roles and Sales Order statuses, and include graphics as well as text.
- ▲ Crystal Reports Designer can also be used to build new management, sales and production reports, and format files to interface to other software (such as exporting purchase orders or links to machinery)



Managing your software can be complex, even on a single site. When running multiple sites, or supporting remote sales staff, resellers or installers, the problems could become more complex. Typical problems include:

- ▲ **High IT costs** through supporting and maintaining software and hardware, including slow equipment
- ▲ **Data integrity problems**, from multiple sites needing to replicate information or access the latest data
- ▲ **Complex administration** of what internal or external users need access to, and how to manage that

Windowmaker OnDemand is a unique solution, delivering instant access to your complete Windowmaker system at anytime, from anywhere. It creates a single access point that virtually any internet-enabled or Microsoft-based device can access. It could change the way you run your business.

- ▲ Provide full access to Windowseller for resellers and installers, with simple administration, no loss of functionality, with easy order import
- ▲ Allowing sales staff to access Windowmaker, with all their usual options and features, from any internet-enabled PC at work, at home or out on the road
- ▲ Flexible access for all staff across the company, from senior management to shopfloor assembly staff



Windowmaker 2012.... Culmination of 500
man years of R&D
Thousands of features ..
New Role-Tailored Client
SQL-based business intelligence features

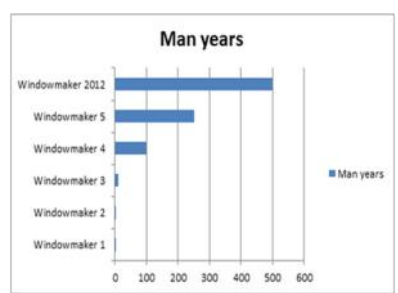


Windowmaker 2012

The biggest Windowmaker release this millennium

500 years R&D

Windowmaker 2012 builds on the foundations of Windowmaker versions 1 to 5. The total time invested in Windowmaker by the development team now exceeds 500 man years. This massive effort has resulted in a product that boasts thousands of useful features, but remains easy to use.

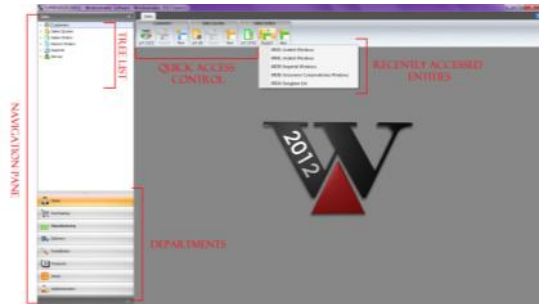


Modern, yet familiar user interface

Windowmaker 2012 includes all the functionality from earlier versions - and more. However, now the Outlook-style menus mean that it's easier to find things - and quicker to change to different parts of the software.

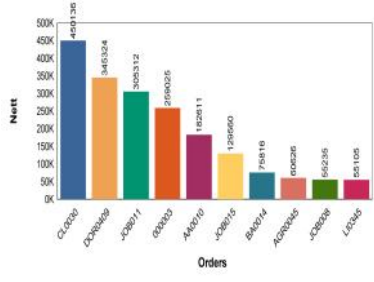
Role-tailored client

The Role-Tailored client interface in Windowmaker 2012 is designed to match the role and needs of users within different departments. Role categories provide such users with a single view of job-related tasks and information and enables them to organise, prioritise and access work from one main location within the software. This provides easier navigation, increased productivity and effectiveness.



Superlative reports

Windowmaker has been sold to a huge variety of window and door companies over 70 countries. The feedback from these customers has been especially influential on the design of reports. Windowmaker 2012 provides many improved and new reports.



Enriched library of standard reports - Windowmaker 2012 also features improved business intelligence and reporting capabilities based on the new Microsoft SQL Server database layer, enabling employees to drill into data, identify trends, generate business insights, and monitor how they're tracking against key performance indicators.



The Windowmaker range



Windowmaker **Express**

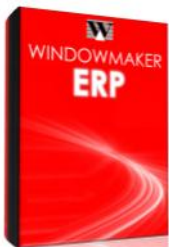
Windowmaker Express provides a complete quotation, design and production system for growing small and medium sized manufacturers, helping to improve business processes, increase efficiency and grow with the business.

Windowmaker Express is built on Microsoft SQL Server Express – the free version of the world's favourite database system, with excellent performance and reliability. Windowmaker Express is available with up to 10 concurrent users.



Windowmaker **SQL**

Windowmaker SQL builds on the foundations of Windowmaker Express to allow more users, bigger database capacities, improved performance and greater customisation. It is ideal for companies with multiple sites and/or remote sales teams.



Windowmaker **ERP**

Windowmaker ERP allows Windowmaker functionality to be accessed from within Microsoft Dynamics ERP. Now window manufacturers do not need to compromise by running multiple systems, but can have a single software solution that provides integrated, best of breed functionality.

Windowmaker **Lite**

Windowmaker Lite is software designed for the small manufacturer, supplied in partnership with profile companies, enabling you to start designing and producing windows in minutes.

Window**seller**

Windowseller is the complete software package for reseller to produce accurate and professional quotations, convert these to orders and transfer them electronically to fabricators.

Windowmaker 2012 now available



UK / International

Meadway House
17 Brighton Road
Surbiton
Surrey
KT6 5LR
United Kingdom

T +44 (0)20 8390 4931
F +44 (0)20 8390 6147

North America

115 Wolseley Street
Unit A
Toronto
M6J 1K1ON
Canada

T +1 (416) 762 5299
+1 (647) 258 4720
F +1 (416) 946 1467

Asia

201-207 Kalapi Avenue
20 Punit Nagar
Old Padra Road
Baroda
390015 Gujarat
India

T +91 (0)265 234 2716
F +91 (0)265 308 2808

Australia

Fenestration Solutions Aus.
1/11 Ashley Park Drive
Chelsea Heights
3196 VIC
Australia

T +61 (3)9773 3966
+61 (2)9037 4202
F +61 (3)9773 3988

France

Meadway House
17 Brighton Road
Surbiton
Surrey
KT6 5LR
United Kingdom

T +33 (0) 1 7072 6509
F +44 (0)20 8390 6147

Ireland

WGC Software Consultants
Unit 20
North City Business Centre
Belfast
BT 15 1GG
Northern Ireland

T +44 (0)2890 351188
F +44 (0)2890 351104

Germany

Büro-und Datentechnik Sell
Anger 14
D-07366 Pottiga
Germany

T +49 (0)366 422 8002
F +49 (0)366 422 8007

China

Decasoft Technologies Inc.
B-5F Qilusoft Park
No.1 Shunhua Rd.
High-tech Zone
Jinan City
P.R. China 250101

T +86 531 8900518
F +86 531 8065619

info@windowmaker.com

www.windowmaker.com