



Contents

Pre-requisites for upgrading	3
Windowmaker 2018 R3.7	4
General Enhancements	4
Crystal Reports	4
Database Schema Changes	4
Issues resolved	4
Windowmaker 2018 R3.5	5
General Enhancements	5
Order Entry, Reports	5
Crystal Reports - UDFs	5
Issues resolved	6
Windowmaker 2018 R3.2	7
General Enhancements	7
Database Schema Changes	7
Issues resolved	7
Windowmaker 2018 R2.3	8
General Enhancements	8
Order Entry - General.....	8
Brand Summary Report	8
Data Set-up - Parts	8
Issues resolved	8
Windowmaker 2018 R2.2	10
General Enhancements	10
Crystal Reports - UDFs	10
Crystal Reports – Added UDFs.....	13
Renamed Crystal Reports:	13
Changes to Database View	13
Issues resolved	14
Windowmaker 2018 R2.1	15
General Enhancements	15
Order Entry - General.....	15
Reports - Look & Feel	15
Production Document.....	15
Windowmaker SQL, Windowmaker ERP	15
Products - Where Used	15
Database Schema Changes	16
Issues resolved	16
Windowmaker 2018 R2	18
General Enhancements	18
Frame Production Settings.....	18
Database Schema Changes	18
Issues resolved	18
Windowmaker 2018	20
Pre-requisites for upgrading	20
General Enhancements	20
Costheads.....	20
Order Entry	20
Quotation, Order Acknowledgement, Invoice	20
Purchase Order	20
Wallchart/Design Summary	21
Glazing.....	21
Database Schema Changes	22
Elevations	22
Enhancements to Options	22



Remakes.....	22
Enhancements to Products	22
Windowseller.....	22
Issues resolved	23

Windowmaker 2018 Version 7.x

Release Notes



Pre-requisites for upgrading

When upgrading please also refer to below documents for changes since your current version:

If your current version is	What's New	Release Notes
Windowmaker 2018 (v7.x)	www.windowmaker.com/EN/PDF/Windowmaker%202018%20(v7.x)%20What's%20New.pdf	---
Windowmaker 2012 (v6.x)	www.windowmaker.com/EN/PDF/Windowmaker%202012%20(v6.x)%20What's%20New.pdf	www.windowmaker.com/EN/PDF/Windowmaker%202012%20(v6.x)%20Release%20Notes.pdf
Windowmaker 5 (v5.x)	www.windowmaker.com/EN/PDF/What%27s%20New%20-%20Windowmaker%205.x.pdf	

Windowmaker 2018 R3.7

General Enhancements

Crystal Reports

The program now outputs Short Description for answers of 'Part Filter' Type Options (Options with real parts as answers) e.g. Door Slabs, Glass Inserts, Profile (Part Filter). Earlier it used to output Stock No., making customer documents less informative.

Database Schema Changes

Changes specific to database tables:

Table	Column	Change
WMCustomer	DefaultLineSpecification (XML)	Added for storing details of default options-answers and glazing.
WMStockHeader	Rack	Created an index idxWMStockHeaderRack on WmStockHeader.Rack

Issues resolved

Order Entry | Sales Line - 1975064

The problem with incorrect pricing being stored on a sales line on 'drag and drop' copy of sales line item on another sales line such that both sales lines have different extras category applicable to them (or no extras) is now resolved.

Order Entry | Property Sales line - 1974846

The problem with the program reflecting recalculated prices on adding a property rather than the actual prices stored on the property is now resolved.

Customer | Standard Products - 1973944

The problem of incorrect storage of grid (Georgian) information in some cases is now resolved. This has earlier resulted in the Grid changing when reopening a Standard Product as compared to what was saved.

Remakes - 1974616

Creating Remake Order using a design having 1/4-1/2-1/4-dimension split was not working correctly. This is now rectified.

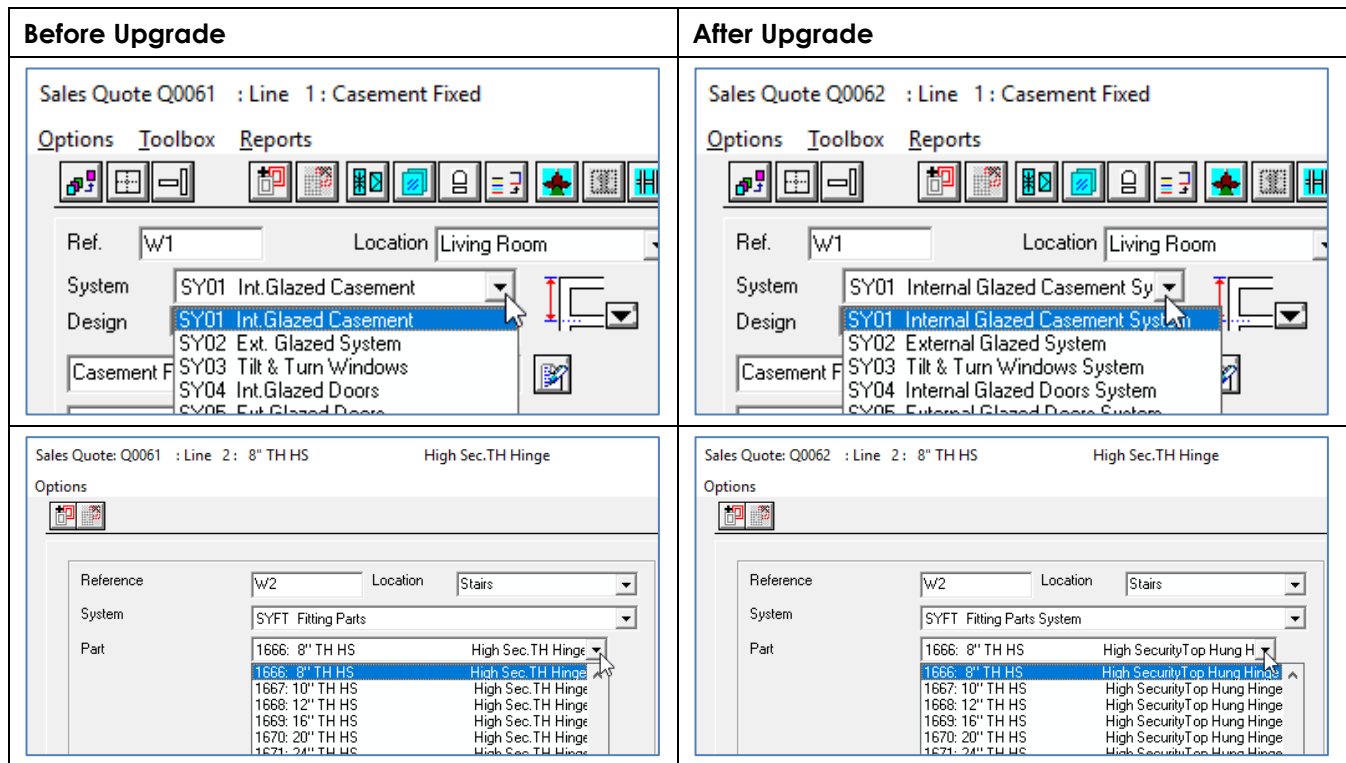
Windowmaker 2018 R3.5

General Enhancements

Order Entry, Reports

During order entry, Windowmaker now displays Long Description if specified; else Short Description, for:

- System List
- Parts List in '+Part' Sales Lines



Crystal Reports

- Standard as well as custom Crystal Reports now output Long Description of Systems.
- For '+Part' Sales Lines, Crystal Reports now output Long Description if specified; else Short description.

Crystal Reports - UDFs

Changes to Crystal Report UDFs:

UDF	Change
WMSaleslineSystemDescription1()	Now return the Long Description if present, else Short Description.
WMSalesHeaderPhotoFront() WMSalesHeaderPhotoFront1()	Now allows to suppress Glass and Profile Colour by setting proper Flag2. You may modify the Flag2 value of these UDFs in any custom Crystal report, to suppress profile and glass colours.



Issues resolved

Order Entry | Shapes - 1974002

The problem with the change of size freezing the program for hexagon shape is now resolved.

Order Entry | Property Sales line - 1870523

The Speed of the program while selecting and changing Property Products as well as entering their location during order Entry is now improved

Customer | Property Products - 1974112

The problem of incorrect Costing, Pricing getting calculated for a Property product which contained Part or Manual Sales Lines with multiple quantity is now resolved.

Production | Offcuts - 1974094

The limit for storing Offcuts is increased from 999 to 9999999.

Production | Link to Welder - 1873108

The problem with incorrect finish sizes being calculated for an 8 headed welder link when a threshold was applied is now resolved.

Production | Link to Welder - 1974272

The problem with "Pre-fabricated" information missing in welder links for certain designs is now resolved.

Products | Migration - 1973886

The problem with System Analysis code not getting set in Systems and Sales lines if non-migrated data is migrated to latest version is now resolved. Earlier, this resulted in the 'Link to Sales' functionality malfunctioning, and orders could not be invoiced.

Purchasing | Purchase Order - 1974184

If a Purchase Order had more than 20 characters in Reference, the Purchase Order list did not fetch the PO details when trying to partially receive it. The problem is now resolved.

Crystal reports - 1974207

Changing the 'Viewed from' setting and printing reports resulted in missing graphic details on reports. This problem is now fixed.

Crystal reports - 1973710

Adding Status No. in report name for limiting report availability on Status was not working correctly for sub-orders, when viewing sub-orders list from within the Phased Order notebook. This is now corrected.

Windowmaker 2018 R3.2

General Enhancements

Database Schema Changes

Changes specific to database tables:

Table	Column	Change
WMBOMTable	BomID	Changed type from Int to BigInt to allow more BOM Lines to be stored.
	SequenceID	Added
	ParentSequenceID	Added
	ParentBomID	Removed

Changes to database views:

Name	Remarks	
WMBOM	BomID	Changed type from Int to BigInt
	SequenceID	Added
	ParentSequenceID	Added
	ParentBomID	Retained

Crystal Reports:

All standard crystal reports updated to use ParentSequenceID instead of ParentBomID. Any custom report that uses the ParentBomID will continue to work. However, you may modify these to use ParentSequenceID instead.

Issues resolved

Purchase Reports - 1973724

WM_Purchase Order and WM_Glass Order reports used to show only 2 decimal places for currency even though the Home currency was set with 4 decimal places. This is now resolved.

Order Entry | Variable Spacer Thickness – 1973650

Program used to give an error in Imperial data, if the System setting only allowed an exact glazing thickness and the spacer thickness was changed during order entry to result in that thickness. This is now resolved.

Production | Schedule Board, Delivery | Schedule Board – 1973701

The Performance degradation of the application on visiting the Schedule Board is now fixed.

Windowmaker 2018 R2.3

General Enhancements

Order Entry - General

For parts with '*'s (asterisks), if the final stock number after substituting the '*'s exceeds 16 characters, the program will now give a warning instead of an error.

Brand Summary Report

The Brand Summary report is now renamed to 'Specification Summary'.

Data Set-up - Parts

When upgrading from Windowmaker 2018 R2 or higher, you may get the below warning if there are parts that use Cost Matrices indexed on a Size Type Option. Please correct the indices if needed, as instructed on the warning dialog. Please contact help@windowmaker.com for any additional help you may need.



Module	Product ID	Product No.
Profile System Data	55	Profile1
Profile System Data	57	OL056-WHT
Profile System Data	56	OL056-BRN

Issues resolved

Order Entry | Recalculation - 1872910

Users were unable to Re-calculate an Order or Quote if opened from the Customer notebook. This is now resolved.

Order Entry | Sales Header Notebook - 1973256

The problem with 4-digit user ID not supported in the 'Owner' combo of the Sales Header notebook is now resolved.

Order Entry | Sales line notebook - 1867526

The problem with program wrongly selecting a Standard location from the "Location" list if a custom location with a matching prefix is entered is now resolved.

Order Entry | Property Sales line - 1870523

The speed of the program while selecting and changing Property Products as well as entering their location during order Entry is now improved.

Order Entry | Global Changes - 1872639

The problem with the Multiline texts based on templates not getting refreshed while using global changes is now fixed.

Order Entry | Bays - 1872354

The change of Width from Situation page converted a 180° Bay/Bow window to a 90° one. This is now corrected, and the angle does not get changed.



Order Entry | On Stop - 1873103

If Quote is at 'On Stop' status and converted to an Order, the resultant order was also put 'On Stop'. This is now corrected.

Order Entry | Calculation -1973212

The Weight of a 'Make-to-Order' glass was not added to the Frame / Sash weight, resulting in incorrect rule evaluation. This is now corrected.

Order Entry | Sales Lines - 1872415

The problem with OK button being greyed out for certain Design Sales Lines that were converted from old Standard Products is now resolved.

Purchasing | Purchase Order Report - 1872947

The Column spacing of the Standard Purchase Order is now improved.

Stock | Outstanding Purchase Order Report – 1871763

The 'Outstanding Purchase Order' report listed those components whose entire quantities were already fully received. This is now corrected to skip such contents.

Production Batch | Production Document Report - 1872988

The speed of the Production Document is now improved.

Crystal Reports – 1870339

The Program now prints both the Long and Short Descriptions, on reports such as Quotation, Order Acknowledgement, Invoice, Survey Sheet , Production Document etc. if both are selected to be visible on the Order Type.

Crystal Reports | Email Report – 1872608

On Emailing a report, the Email subject now contains the generated file name (as attached to the mail) which normally contains the Report name and other additional attributes. Earlier only the report name was set in the subject.

Sales | Sales Header Import – 1872073

The problem with the Sales Header Totals getting reset to 0 on Import when Priced per Order is now resolved.

Products | Glazing - 1871828

The problem with the user not being able to edit Glazing and Glazing options as previously possible in presence of the "Restricted Setup" option is now resolved.

Production | Schedule Board, Delivery | Schedule Board – 1871667

The Performance degradation of the application on visiting the Schedule Board is now fixed.

Production | Schedule Board - 1873108

The problem with a user having only Production scheduling options (and no delivery scheduling) not being able to schedule orders using drag and drop on the Production Schedule Board is now resolved.

Setup | Survey/Installation Team - 1873144

The problem with the inability to edit existing Survey/Installation teams, if total no. of team counts of a particular type reached 99, is now corrected.

Windowmaker 2018 R2.2

General Enhancements

Crystal Reports - UDFs

The following User-defined Functions (UDFs) are now deprecated. Windowmaker products will stop supporting these UDFs in near future.

Deprecated UDF	Replacement UDF
WMBarcode	WMFrameSashBarcode
WMBarcode1	WMFrameSashBarcode
WMBarcodeI2o5	WMFrameSashBarcode
WMBarcodeI2o51	WMFrameSashBarcode
WMBarcodeI2o5WithCheckDigit	WMFrameSashBarcode
WMBarcodeI2o5WithCheckDigit1	WMFrameSashBarcode
WMExtractAnnotatedPicture	WMExtractAnnotatedPicture1
WMBatchBaseCost	Use corresponding field from WMBom View
WMBatchPlusMinusCost	Use corresponding field from WMBom View
WMBatchWastageCost	Use corresponding field from WMBom View
WMBatchCost	Use corresponding field from WMBom View
WMSalesHeaderUVal	WMSalesHeaderUVal1
WMSalesHeaderUserTelephone	Can be derived by linking WMSalesHeader.Responsible with WMUser.Name and using WmUser.TelNo
WMSalesHeaderUserTelephone1	Can be derived by linking WMSalesHeader.Responsible with WMUser.Name and using WmUser.TelNo
WMSalesHeaderUserEmail	Can be derived by linking WMSalesHeader.Responsible with WMUser.Name and using WmUser.Email
WMSalesHeaderUserEmail1	Can be derived by linking WMSalesHeader.Responsible with WMUser.Name and using WmUser.Email
WMSalesHeaderUserSalutation1	Can be derived by linking WMSalesHeader.Responsible with WMUser.Name and using WmUser.Salutation1
WMSalesHeaderUserSalutation11	Can be derived by linking WMSalesHeader.Responsible with WMUser.Name and using WmUser.Salutation1
WMSalesHeaderUserSalutation2	Can be derived by linking WMSalesHeader.Responsible with WMUser.Name and using WmUser.Salutation2
WMSalesHeaderUserSalutation21	Can be derived by linking WMSalesHeader.Responsible with WMUser.Name and using WmUser.Salutation2
WMSalesHeaderSettlementDiscount	WMPaymentTerm Fields are now public and can be derived by linking WMSalesHeader.PaymentTermID with WMPaymentTerm.PaymentTermID

Windowmaker 2018 Version 7.x

Release Notes



WMSalesHeaderSettlementDiscount1	WMPaymentTerm Fields are now public and can be derived by linking WMSalesHeader.PaymentTermID with WMPaymentTerm.PaymentTermID
WMSalesHeaderSettlementDays	WMPaymentTerm Fields are now public and can be derived by linking WMSalesHeader.PaymentTermID with WMPaymentTerm.PaymentTermID
WMSalesHeaderSettlementDays1	WMPaymentTerm Fields are now public and can be derived by linking WMSalesHeader.PaymentTermID with WMPaymentTerm.PaymentTermID
WMSalesHeaderDropNo	WMSalesHeaderDropNo1
WMSalesHeaderPhotoFront	WMSalesHeaderPhotoFront1
WMSalesHeaderCost	Use corresponding field from WMBom View
WMSalesHeaderCost1	Use corresponding field from WMBom View
WMSalesHeaderBaseCost	Use corresponding field from WMBom View
WMSalesHeaderBaseCost1	Use corresponding field from WMBom View
WMSalesHeaderPlusMinusCost	Use corresponding field from WMBom View
WMSalesHeaderPlusMinusCost1	Use corresponding field from WMBom View
WMSalesHeaderWastageCost	Use corresponding field from WMBom View
WMSalesHeaderWastageCost1	Use corresponding field from WMBom View
WMSalesHeaderCosts	Use corresponding field from WMBom View
WMSalesHeaderCosts1	Use corresponding field from WMBom View
WMSalesHeaderCurrentListPrice	WMSalesHeaderCurrentListPrice1
WMSalesHeaderCurrencyConvCurrentList	WMSalesHeaderCurrencyConvCurrentList1
WMSalesHeaderListPrice	WMSalesHeaderListPrice1
WMSalesHeaderTotalGoodsPrice	WMSalesHeaderTotalGoodsPrice1
WMSalesHeaderCurrentListDiscount	WMSalesHeaderCurrentListDiscount1
WMSalesHeaderListDiscount	WMSalesHeaderListDiscount1
WMSalesHeaderTaxRate	WMSalesHeaderTaxRate1
WMSalesHeaderTaxBRate	WMSalesHeaderTaxBRate1
WMSalesHeaderTaxNo	WMSalesHeaderTaxNo1
WMSalesHeaderTaxBNo	WMSalesHeaderTaxBNo1
WMSalesHeaderTaxable	WMSalesHeaderTaxable1
WMSalesHeaderTaxableB	WMSalesHeaderTaxableB1
WMSalesHeaderNonTaxable	WMSalesHeaderNonTaxable1
WMSalesLineSystemDescription	WMSalesLineSystemDescription1
WMSalesLineSystemUVal	WMSalesLineSystemUVal1
WMSalesLineProductCode	WMSalesLineProductCode1
WMSalesLineDesignNo	WMSalesLineDesignNo1
WMSalesLineDesignDescription	WMSalesLineDesignDescription1
WMSalesLineProductionNote	WMSalesLineProductionNote1
WMSalesLineInstallationNote	WMSalesLineInstallationNote1
WMSalesLineGlazingDescription	WMSalesLineGlazingDescription1
WMSalesLinePicture	WMSalesLinePicture1

Windowmaker 2018 Version 7.x

Release Notes



WMSalesLineFrameCount	WMSalesLineFrameCount1
WMSalesLineDoorCount	WMSalesLineDoorCount1
WMSalesLineWindowCount	WMSalesLineWindowCount1
WMSalesLinePlan	WMSalesLinePlan1
WMSalesLineCillPlan	WMSalesLineCillPlan1
WMSalesLineProcessQuantity	WMSalesLineProcessQuantity1
WMSalesLineOutstandingQuantity	WMSalesLineOutstandingQuantity1
WMSalesLineDespatchedQuantity	WMSalesLineDespatchedQuantity1
WMSalesLineInvoicedQuantity	WMSalesLineInvoicedQuantity1
WMSalesLineSize	WMSalesLineSize1
WMSalesLineBaseline	WMSalesLineBaseline1
WMSalesLineSightlineSize	WMSalesLineSightlineSize1
WMSalesLineInternalSightlineWidths	WMSalesLineInternalSightlineWidths1
WMSalesLineInternalSightlineHeights	WMSalesLineInternalSightlineHeights1
WMSalesLineBaseCost	Use corresponding field from WMBom View
WMSalesLineBaseCost1	Use corresponding field from WMBom View
WMSalesLinePlusMinusCost	Use corresponding field from WMBom View
WMSalesLinePlusMinusCost1	Use corresponding field from WMBom View
WMSalesLineWastageCost	Use corresponding field from WMBom View
WMSalesLineWastageCost1	Use corresponding field from WMBom View
WMSalesLineCost	Use corresponding field from WMBom View
WMSalesLineCost1	Use corresponding field from WMBom View
WMSalesLineNett	WMSalesLineNett1
WMSalesLineMarkup	WMSalesLineMarkup1
WMSalesLineCurrentListPrice	WMSalesLineCurrentListPrice1
WMSalesLineCurrencyConvCurrentList	WMSalesLineCurrencyConvCurrentList1
WMSalesLineListPrice	WMSalesLineListPrice1
WMSalesLineActualPrice	WMSalesLineActualPrice1
WMSalesLineCurrentListDiscount	WMSalesLineCurrentListDiscount1
WMSalesLineListDiscount	WMSalesLineListDiscount1
WMSalesLineDiscount	WMSalesLineDiscount1
WMSalesLineCurrentListDiscount2	WMSalesLineCurrentListDiscount21
WMSalesLineListDiscount2	WMSalesLineListDiscount21
WMSalesLineDiscount2	WMSalesLineDiscount21
WMSalesLineTaxRate	WMSalesLineTaxRate1
WMSalesLineTaxName	WMSalesLineTaxName1
WMSalesLineTaxNo	WMSalesLineTaxNo1
WMSalesLineOptionAnswer	WMSalesLineOptionAnswer1
WMSalesLineOption	WMSalesLineOption1
WMSalesLineOptionType	WMSalesLineOptionType1
WMSalesLineRoofOption	WMSalesLineRoofOption1
WMSalesLineRoofOptionAnswer	WMSalesLineRoofOptionAnswer1
WMSalesLineRoofHeight	WMSalesLineRoofHeight1
WMSalesLineRoofPitch	WMSalesLineRoofPitch1
WMSalesLineRoofGlazing	WMSalesLineRoofGlazing1

WMSalesLineRoofPlanGraphics	WMSalesLineRoofPlanGraphics1
WMSalesLineFacetNo	WMSalesLineFacetNo1
WMSalesLineFrameType	WMSalesLineFrameType1
WMSalesLineFramesIdenticalTo	WMSalesLineFramesIdenticalTo1
WMSalesLineFrameUValue	WMSalesLineFrameUValue1
WMPaneType	WMPaneType1
WMBomQuantity	WMBomQuantity1
WMBomSize	WMBomSize1
WMBomPositionCode	WMBomPositionCode1
WMBomUnit	WMBomUnit1
WMBomRate	WMBomRate1
WMBomBase	WMBomBase1
WMBomPlusMinusCost	WMBomPlusMinusCost1
WMBomWastageCost	WMBomWastageCost1
WMBomCost	WMBomCost1
WMBomExtrasDiscountedPrice	WMBomExtrasDiscountedPrice1
WMBomGraphics	WMBomGraphics1
WMBomNotchPositions	WMBomNotchPositions1
WMBomBarcode	WMGlassBarcode
WMBomBarcode2	WMGlassBarcode
WMBomBarcode1	WMProfileBarcode
WMSalesLineNettPrice	WMSalesLineNettPrice1

It is recommended that custom reports are modified to replace deprecated UDFs. Please contact help@windowmaker.com for any additional help you may need.

The deprecated UDFs are now moved to CRUFLWMOLD.DLL. Users hitting the maximum UDF limit of 300 can delete CRUFLWMOLD.DLL to resolve the error, provided custom reports do not use deprecated UDFs.

Crystal Reports – Added UDFs

UDF Name
WMProfileBarcode
WMWelderBarcode
WMFrameSashBarcode
WMGlassBarcode

Renamed Crystal Reports:

Old Name	New Name
WM_Link to WM Measure	WM_Link to Windowmaker Measure

Changes to Database View

View	Columns	Change
WMBom	IsMTOGlazingChild	Added

Issues resolved

Order Entry

1870464 - The problem with Size or Quantity type Option answers getting changed automatically on changing the answer and navigating to the BOM page using a mouse is now fixed.

1871018 - The incorrect error "Product No. exceeds 16 characters" given even if the Product Number is of exact 16 characters is now rectified. The program no longer gives an error in this situation.

1870657 - The program now gives an error if the same option has multiple and different "Auto" answers in a system. This may require a correction in the data setup.

1869329 - The Problem with the Costing, Pricing report hanging sometimes is now resolved.

Order Entry – Standard Products

1870652 - The problem with <All> not being available on Standard Product notebook during order Entry is now fixed.

Scheduling

1870000 - The speed of performing "Schedule Singly", "Move" on the Schedule board and scheduling from the 'Schedule Board' or the 'Schedule Now' dialog is now improved.

Excel-based Rules

1870604 - The answer of an option set to 'auto' was not changing on Solution page while changing from one Excel System/Sub-system to another, if the auto-answers were different in the two systems. This is now fixed.

1870801- The problem with Glass not appearing under the Frame/Sash subassembly for a remake of a Sales Line created using Excel sub-system is now resolved.

Windowmaker 2018 R2.1

General Enhancements

Order Entry - General

For parts with '*'s (asterisks), if the final stock number after substituting the '*'s exceeds 16 characters, the program will now give an error.

Reports - Look & Feel

The formatting of standard Windowmaker reports has been improved.

- ▲ Report title is now at centre to make it more prominent
- ▲ For all tabular reports, alternate row shading is now eliminated and gridlines are introduced to increase readability.
- ▲ 'Created with Windowmaker Software' is printed in a small font at bottom left

Refer [What's New](#) for more details.

Production Document

This version comes with a revised Production Document. However the previous one is also available, as 'Production Document (Old)'.

Windowmaker SQL, Windowmaker ERP

These products no longer support SQL Server 2005. Please refer 'How to upgrade SQL Server to the latest version?' in the Windowmaker Help file.

Products - Where Used

The 'Where used' feature is now accessed from the Products list. Earlier this was accessed from within the product. Refer [What's New](#) for more details.

Before Upgrade	After Upgrade																														
<p>Products:</p> <p>Part: 602 : OL056-2/* Outer Frame</p> <p>Header Attributes Where Used</p> <p>Catalog: Profile System Data</p> <p>ID: 602</p> <p>Stock No.: OL056-2/*</p>	<p>Products</p> <p>File Edit View Tools Help</p> <p><All></p> <p>Options Designs Parts Part Matrices Systems</p> <p>Drag a column header here to group by that column</p> <table border="1"> <thead> <tr> <th>ID</th> <th>Favorite</th> <th>Product No.</th> <th>Description</th> <th>Type</th> <th>Cost</th> <th>Unit Desc.</th> <th>Costhead</th> </tr> </thead> <tbody> <tr> <td>600</td> <td></td> <td>OL056-WHT</td> <td>Outer Frame</td> <td>Profile</td> <td>2.80</td> <td>Metre</td> <td>1: Main profiles</td> </tr> <tr> <td>601</td> <td></td> <td>OL056-BRN</td> <td>Outer Frame</td> <td>Profile</td> <td>3.10</td> <td>Metre</td> <td>1: Main profiles</td> </tr> </tbody> </table> <p>Where Used</p>	ID	Favorite	Product No.	Description	Type	Cost	Unit Desc.	Costhead	600		OL056-WHT	Outer Frame	Profile	2.80	Metre	1: Main profiles	601		OL056-BRN	Outer Frame	Profile	3.10	Metre	1: Main profiles						
ID	Favorite	Product No.	Description	Type	Cost	Unit Desc.	Costhead																								
600		OL056-WHT	Outer Frame	Profile	2.80	Metre	1: Main profiles																								
601		OL056-BRN	Outer Frame	Profile	3.10	Metre	1: Main profiles																								
<p>Glazing:</p> <p>Glazing: 1 : 4-12-4 Clear</p> <p>Header Configuration Attributes Limits</p> <p>Catalog: Glazing</p> <p>ID: 1</p> <p>Stock No.</p> <p>Description: 4-12-4 Clear</p> <p>Type: Sealed Unit - Double Glazed</p> <p>Costhead: 12 - Glass -supplier 1</p> <p>Costing Approach: Cost/Area 25.00</p> <p>Minimum Area: 0.20</p> <p>Rounding: 0</p> <p>Where Used</p>	<p>Products</p> <p>File Edit View Tools Help</p> <p><All></p> <p>Glazing</p> <p>Drag a column header here to group by that column</p> <table border="1"> <thead> <tr> <th>ID</th> <th>Description</th> <th>Long Description</th> <th>Costhead</th> <th>Cost</th> <th>Unit Desc.</th> </tr> </thead> <tbody> <tr> <td>300001</td> <td>4-12-4 Clear</td> <td>4-12-4 Clear</td> <td>12: Glass -supplier 1</td> <td>25.00</td> <td>Sq M</td> </tr> <tr> <td>300002</td> <td>4-12-4 Patterned</td> <td>4-12-4 Patterned</td> <td>13: Glass -supplier 2</td> <td>Matrix</td> <td>Sq M</td> </tr> <tr> <td>300003</td> <td>4-12-4 Clear - Tough</td> <td>4-12-4 Clear - Toughened</td> <td>12: Glass -supplier 1</td> <td>Matrix</td> <td>Sq M</td> </tr> <tr> <td>300004</td> <td>4-12-4 Patterned & T</td> <td>4-12-4 Patterned & Toughened</td> <td>12: Glass -supplier 1</td> <td>Matrix</td> <td>Sq M</td> </tr> </tbody> </table> <p>Where Used</p>	ID	Description	Long Description	Costhead	Cost	Unit Desc.	300001	4-12-4 Clear	4-12-4 Clear	12: Glass -supplier 1	25.00	Sq M	300002	4-12-4 Patterned	4-12-4 Patterned	13: Glass -supplier 2	Matrix	Sq M	300003	4-12-4 Clear - Tough	4-12-4 Clear - Toughened	12: Glass -supplier 1	Matrix	Sq M	300004	4-12-4 Patterned & T	4-12-4 Patterned & Toughened	12: Glass -supplier 1	Matrix	Sq M
ID	Description	Long Description	Costhead	Cost	Unit Desc.																										
300001	4-12-4 Clear	4-12-4 Clear	12: Glass -supplier 1	25.00	Sq M																										
300002	4-12-4 Patterned	4-12-4 Patterned	13: Glass -supplier 2	Matrix	Sq M																										
300003	4-12-4 Clear - Tough	4-12-4 Clear - Toughened	12: Glass -supplier 1	Matrix	Sq M																										
300004	4-12-4 Patterned & T	4-12-4 Patterned & Toughened	12: Glass -supplier 1	Matrix	Sq M																										

Database Schema Changes

Changes to database tables:

Table	Column	Change
WMCustomer	Responsible	Changed size from nvarchar(10) to nvarchar(50)
	LastModifiedBy	Changed size from nvarchar(10) to nvarchar(50)
	CreatedBy	Changed size from nvarchar(10) to nvarchar(50)
	CustomerType	Added
WMCustomerHistory	User	Changed size from nvarchar(15) to nvarchar(50)
WMCustomerSpecialTerm	CreatedBy	Changed size from nvarchar(10) to nvarchar(50)
	LastModifiedBy	Changed size from nvarchar(10) to nvarchar(50)
WMRoute	LastModifiedBy	Changed size from nvarchar(10) to nvarchar(50)
WMSalesHeaderElevation	LastModifiedBy	Changed size from nvarchar(10) to nvarchar(50)
WMSalesHeaderSpecialTerm	LastModifiedBy	Changed size from nvarchar(10) to nvarchar(50)
WMSalesHeaderTable	LastModifiedBy	Changed size from nvarchar(10) to nvarchar(50)
	CreatedBy	Changed size from nvarchar(10) to nvarchar(50)
	Responsible	Changed size from nvarchar(10) to nvarchar(50)
	Reference	Added idxWMSalesHeaderTableReference Non-unique, Non-clustered index on Reference (Index Added)
WMSalesLineTable	CalculationStatus	Added
WMSchedule	LastModifiedBy	Changed size from nvarchar(10) to nvarchar(50)
WMSupplierTransaction	LastModifiedBy	Changed size from nvarchar(10) to nvarchar(50)
	CreatedBy	Changed size from nvarchar(10) to nvarchar(50)
WMTrackingTable	User	Changed size from nvarchar(15) to nvarchar(50)
WMUser	TenantID	Added
		Unique constraint changed from Name to Name+TenantID

Changes to database views:

View	Column	Change
WMSalesLine	RevisionNo	Added

Issues resolved

Order Entry

1868525 - If Cancel was pressed after opening any Sales Quote or Order, without changing, it did not get listed in the 'Recent' menu. This is now resolved.

1869098 - Answers of some of the Options of a Standard Product were not Option-Answer dialog on Solution Page, for the Standard Product was created or modified in WM 2012 R2.1.1 or earlier.

1868737 - Threshold parts are now correctly calculated for Sliders XiOiO and OiOiX.

1868218 - A Sales Quote or Order created by a Sales Client in the local database crashed if opened by a user in Windowmaker SQL after replication. This is now resolved.

1867525 - Program taking too much time when a user opens a phased order with 4000 or more Sales Lines is now resolved.

1868752 - The door light / glass selection was slow when creating new Door item or modifying existing door item. This is now resolved.



1870376 - The Gap specified in 'Grid - Separate Glass - Thickness only' did not have effect on glass sizes. This is now corrected.

1869619 - When a 'Between leaves with stuck on both sides' type grid was applied to a Glass, the costing of between leave grids was not calculated correctly. This is now resolved.

1870070 - The problem of the program sometimes experiencing a deadlock while opening the Order or Quote list in a heavy traffic multiuser environment for very large databases is now resolved.

Purchase Order Numbering

1869207 - The problem of the program generating duplicate Purchase Order numbers with automatic document numbering is now resolved.

Products - System

1868420 - The problem with the corruption of System level Mark-up on upgrading any data to Windowmaker 2018 R2 is now resolved. If a user now upgrades to Windowmaker 2018 R2 directly, the System mark-ups are left intact.

Bar Optimization

1869215 - The program now allows performing variable length Bar Optimization in absence of the 'Stock Control' option for users who do not also have any Production scheduling options.

1868320 - The problem with Variable length Bar Optimisation result being displayed in Metric format for Imperial data is now corrected. The output is visible as per the size format of the data.

Link to QuickBooks

868710 - Windowmaker QuickBooks integration now works with the US edition of QuickBooks.

Link to Stock

1868761 - Windowmaker no longer updates the physical quantity of Stock records when generating issue transactions if user has 'Link to Stock' option only, and no 'Stock Control'. The earlier behaviour of updating the quantity was incorrect.

Customer Documents (WRP) Setup

1869391 - The problem with incorrect price or quantity value being printed when 'Thousands separator' was checked and the value was greater than thousand, is now corrected.

Tools | Transfer data

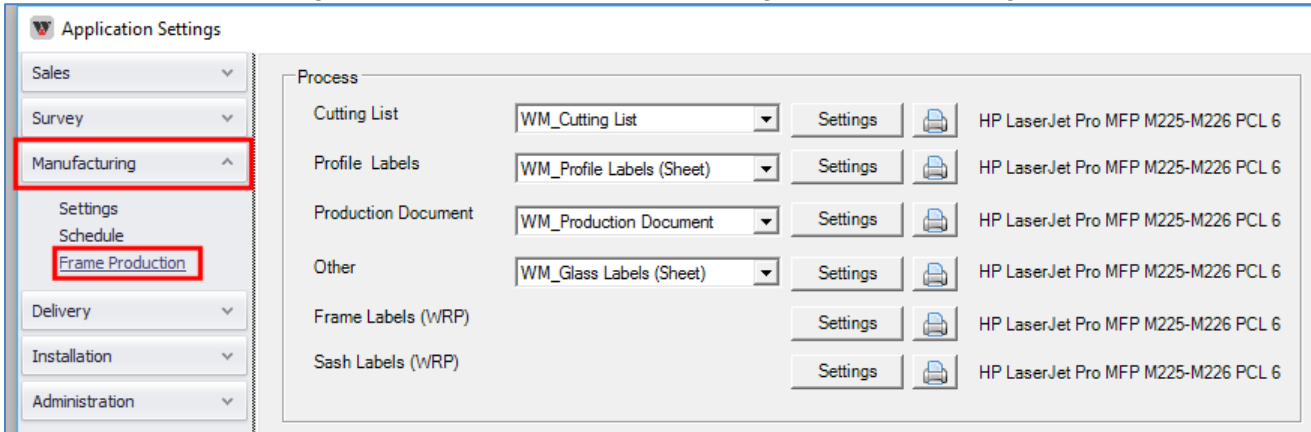
1868574 - The problem with the program throwing an error while doing 'Transfer Data' using the '.MDF' option on a virtual machine using the SQL instance of another machine, is now resolved.

Windowmaker 2018 R2

General Enhancements

Frame Production Settings

Frame Production Settings are moved to Application Settings → Manufacturing → Frame Production.



Database Schema Changes

Changes specific to database tables:

Table	Column	Change
WMProductTable	Status	Added

Issues resolved

Order Entry/Sales Lines

1866884 - The Speed of order entry for Sales Lines using Door Slabs and Glass Inserts is much improved.

1763179 - In the graphics of a shaped Sales Line, the ends of the transoms or mullions are now seen as appropriately hidden behind the profiles to which they meet when the Sales line graphics is viewed from Inside or Outside. Note that in one side they will be hidden behind the meeting profiles and in another side they will be drawn above the meeting profile.

Order Entry/Sales Header

1764494 - When multiple users created a Sales Order/Quote at exactly the same time, the same Sales Header number was allocated to the users if their customers were different. This problem is now resolved and unique Sales Header numbers are allocated to different users.

Order Entry/Sales Lines/Multiline Text

1867175 - The problem with Sales line Multiline Text, set using a Template, not getting refreshed if Sales Line is edited is now resolved. The editing of the Sales Line could be from Order Entry or Record Survey Sizes or any other form which allows changes to Sales Lines.

Order Entry/Revisions

1867112 - The problem with the program sometimes leaving Dummy Revision Records when creating Revisions for Quotes or Orders is now resolved.

1867402 - The problem with Revisions of Sales Quotes storing incorrect constituents for a property, if the property with the same Product code was edited for some other customer is now resolved.

Order Entry/Pricing Special Terms

1867174 - The problem with the Pricing Special Terms not supporting any change if only Extras Pricing was present is now resolved.



Crystal Reports/Locking

1867912 – The Problem with the program locking users unnecessarily while running reports requiring Dummy record generation where records were already stored in the database and no records were generated is now resolved.

Setup/Rules

1867693: When "(1/16) inch rounding" - setting is selected, the program now correctly rounds the negative imperial values and so they are stored and used correctly.

Windowmaker 2018

Pre-requisites for upgrading

When upgrading to Windowmaker 2018, please also refer to below documents on our website (www.windowmaker.com/EN/WhatsNew.aspx) for changes since your current version:

What's New : [www.windowmaker.com/EN/PDF/Windowmaker%202012%20\(v6.x\)%20What's%20New.pdf](http://www.windowmaker.com/EN/PDF/Windowmaker%202012%20(v6.x)%20What's%20New.pdf)

Release Notes : [www.windowmaker.com/EN/PDF/Windowmaker%202012%20\(v6.x\)%20Release%20Notes.pdf](http://www.windowmaker.com/EN/PDF/Windowmaker%202012%20(v6.x)%20Release%20Notes.pdf)

General Enhancements

Costheads

The program now allows storing Costhead description in multiple languages. Existing descriptions will be stored in the language used during program upgrade. Descriptions will be blank for other languages. You need to enter the translations for all required languages. Wherever descriptions are displayed/output it will use descriptions of the language used to run the program.

Order Entry

A warning message "Check BOM" is displayed when combination pane types introduced in R5.1 or later are applied to a sales line. This is to warn against any possible errors in the BOM. The rules need to be modified to ensure that the new pane types are handled appropriately in the data before upgrading to this version.

Quotation, Order Acknowledgement, Invoice

Quotation, Order Acknowledgement & Invoice now print Payment Text as defined on Payment Terms. If not to be printed, then 'Payment Text' must be set to spaces.

Also, these reports used to print two dates – Date & Quote Date. They now print only Quote Date.

Before upgrade:

Quote No.	Customer Ref.	Quote Date	Date	Sales Person - Anil
Q00040	R0029	20-04-2022	11-01-2018	+912652342716 sales1@windowmaker.com

After upgrade:

Quote No.	Customer Ref.	Quote Date	Sales Person - Anil
Q00040	R0029	20-04-2022	+912652342716 sales1@windowmaker.com

Purchase Order

Purchase Order used to print three dates – Date, Order Date & Due Date. It now prints two dates Order Date & Due Date.

Before upgrade:

P.O. No.	Order Ref.	Date	Order Date	Due Date	
P00011	J00011/ R0029	11-01-2018	12-04-2017	17-04-2017	
Order/ Sales Line	Position	Reference	Location	Size	Qty

After upgrade:

P.O. No.	Order Ref.	Order Date	Due Date		
P00011	J00011/ R0029	12-04-2017	17-04-2017		
Order/ Sales Line	Position	Reference	Location	Size	Qty

Wallchart/Design Summary

Wallchart report (WM_Wallchart) is now renamed to Design Summary (WM_Design Summary). The report is now changed to Portrait orientation. Refer [What's New](#) for more details.

Glazing

Glazing & Glazing Options are now migrated to Windowmaker database and stored in the WMProduct table instead of WMGL.DAT and WMGLCV.DAT files respectively. After migration, these files are deleted from the Windowmaker data folder.

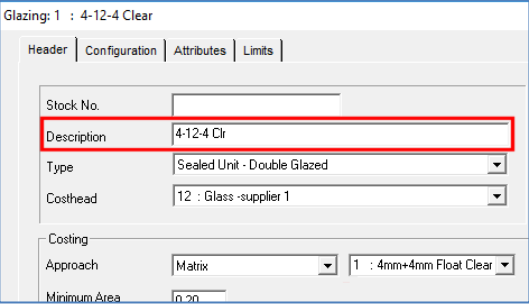
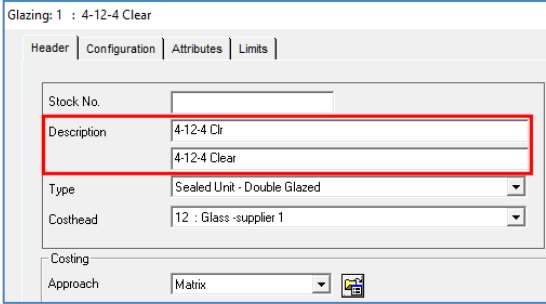

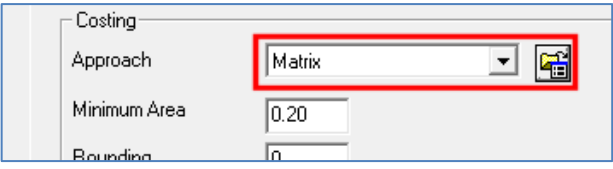
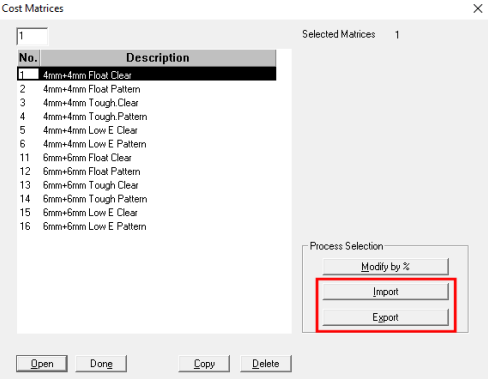
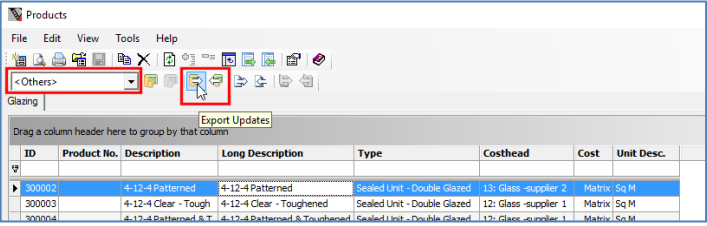
It is now possible to define a long description for glazing records. During data conversion, existing description will be retained as the long description. First 20 characters will be copied to the short description. Outputs and displays will use long description.

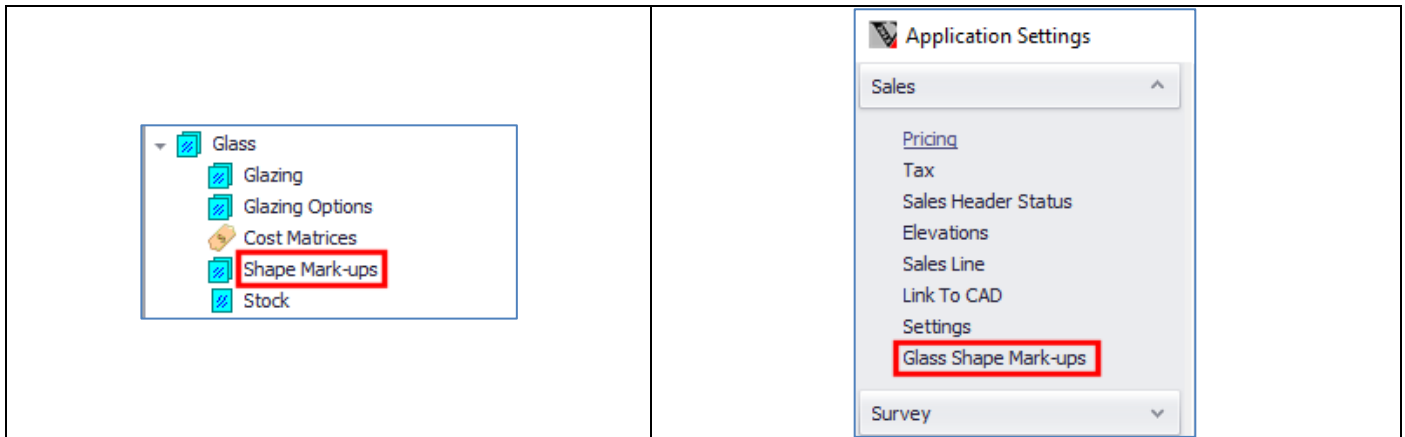
Glazing descriptions can now be stored in multiple languages. Existing descriptions will be stored in the language used during program upgrade. Descriptions will be blank for other languages. The translations for all required languages need to be entered. Wherever descriptions are displayed/output it will use descriptions of the language used to run the program.

Cost matrix associated with any glazing record is directly stored on the record. This makes viewing and editing matrices easier. Earlier cost matrices were set-up separately and corresponding matrix was selected while setting up the glazing record.

Refer [What's New](#) for more details.

Glass Shape Mark-ups settings under Products → Glass → Shape Mark-ups is now moved to Application Settings → Sales → Glass Shape Mark-ups.

Before Upgrade	After Upgrade
	
	
	



Database Schema Changes

Changes to database tables:

Table	Column	Change
WMCostheadTable	Description	Changed type from Text to XML to store language-wise description.
WMSalesLineTable	Flags1	Added. DataType tiny int. Note: This is only for internal use.

Renamed Tables:

Old Name	New Name
WMCosthead	WMCostheadTable

New database views:

Name	Remarks
WMCosthead	The view is created with the same name and similar schema as the corresponding old database table. This should ensure that most existing custom crystal reports work with the new database schema. However, there might be cases where minor changes to some crystal reports might be required to make these work with this program version.

Elevations

Grid size now defaults to Large instead of Medium on Elevations view.

Enhancements to Options

Remakes

Remake button is no longer available on Phased Orders. Remakes need to be created from Sub-orders.

Enhancements to Products

Windowseller

Pricing approach selection has now been moved from Order Type to 'Frames (Bought-to-order)' Costhead.



Issues resolved

Windowmaker 2018

Order Entry/Reports

1765967 - The Survey sheet is now available for Survey Sales Clients.

1764857 - Sales Line level reports requiring dummy B.O.M will now run faster. This will be especially evident when the Sales Quote/Order contains many number of Sales Lines, say, more than 100.

Order Entry/Pricing

1764891- The problem with Negative Pricing Extras lines storing garbage value after upgrading data from a version lower than Wm2012 R5.1 is now resolved. Note that the data needs to be Re-converted to the current version, again.

Order Entry/Pricing/Special Terms

1765921 - The problem with the program sometimes crashing when discount was modified on the Special Terms form is now fixed.

Order Entry/Sales Lines/Calculation

1763883 - If 'Option / Part (Default)' rules for the same 'Mixable By Features' types of Options are executed for different levels then Windowmaker gives 'Invalid Level' error. This is now rectified and such a setup works correctly.

1765824 - The program now displays a calculation error if A & C dimensions of a part used as Transom or Mullion are different. This prevents an incorrect window from being manufactured.

Order Entry/Sales Lines Notebook

1761460 - Windowmaker was not allowing generation of Sales Line level reports for any Sales Order with "Ordered" purchase. This is now corrected and the reports can be run successfully.

1763818 - User could not modify existing Sales Lines having quantity > 999 in presence of the "Surveying" option if a Sales Order/Quote was created using previous versions. This is now corrected.

1765345 - When "Open" button was clicked from the "Lines" page of the Sales Header notebook, the program response was fast but return back to the pages took much longer. This problem in refreshing the "Lines" page is now resolved.

1548070, 1763507, 1763509, 1764289, 1764444, 1765249, 1765567 - The appearance of the Sales Line notebook and allied child forms such as the Glazing notebook, Design Wallchart, Options list, Option prompt, Shapes form etc. have been improved for high resolution screens. The haphazard overlap of forms and controls is vastly improved.

Order Entry/B.O.M.

1763730 - The Supplier discount on the Costhead (negative Costing mark-up) was stored multiplied by 100 in WMBomTable.SupplierDiscount i.e. 5% was stored as 500%. This is corrected for exiting records and also for any new records that will be generated from now on.

Order Entry/Convert Quote to Order

1763911 - The problem with conversion of Quote to Order being prompted for already "Completed" Quotes is now corrected to display an appropriate error instead.

Order Entry/Bays

1765832 - The problem with the Plan Dimension Type getting reset to "Bay Projection" while changing a Standard Product to a design Sales Line is now resolved. Such a Sales Line now retains the last selected Plan Dimension type e.g. American Bay or Bay Angles etc.



Order Entry/Stock Transactions

1657504 - Stock Issue transactions were not created for +Part and +Stock Sales even if stock records existed. This is now corrected.

Order Entry/Phased Orders/Automatic creation of Sub-orders

1764506, 1764508, 1766313 - The speed of creation of suborders using the suborder creation wizard is now substantially improved. Also, sub-orders with no Order value or no sales lines are now automatically deleted.

Order Entry/Phased Orders /Sub-orders

1762095 - The problem on the 'Live' and 'Complete' views not getting refreshed on the Sub-Order page if user updated the status of the sub-orders to 'Cancelled' status is now resolved.

Order Entry/Remakes

1766497 - While creating remake, the problem of dimensions modified by users being overwritten by default design dimensions is now resolved.

General/Reports

1764704 - Any report designed for Landscape orientation now does not need a printer to be configured for Landscape printing to be selected before printing the report. The program will print the report in the designed Orientation automatically. Same applies for Portrait paper orientation also.

1766420 - Report settings page was not appearing properly for higher screen resolution such as 3840 x 2160. This is now rectified.

Purchase

1764885 - The Special Instructions multiline text box on the Purchase Input form now supports "unlimited" data to be entered.

Production Batches

1765228 - The problem with speed degradation while opening Live batches list or opening a batch is now rectified.

Scheduling/Production

1765344 - While moving sales line(s) from production batch, the problem of content of existing batch sometimes getting corrupt is now resolved. This happened for orders that were not already split scheduled.

Process/Link to Working Centre

1654761 - The problem of Profile Pairing not working for Reinforcement when "Link to Working Centre" Option was present is now corrected.

Process/Link to Saw

1764471 - If the user does not have a Bar Optimisation option, then the saw setting will automatically be changed to 'At saw' irrespective of the default in the data. The processing will also be according to the "At saw" setting, which it was already generating and required no correction.

Customers/Import

1763114 - The problem of Windowmaker being unable to Import customers in SQL Server 2008 and 2008R2 databases used in the Windowmaker backend is now resolved. Note that in higher versions of SQL such as 2012, 2014, 2016 etc. the functionality was working correctly and will continue to work so.

Windowmaker 2018 R1

Order Entry/Pricing

1866899 - Making changes on the 'Pricing Special Terms' when decimal separator was not "." (dot), caused random discounts to be calculated for Sales lines. This is now corrected.

1867022 - The problem with Mark-up or discount percentage showing garbage values on the Pricing Special Terms is now resolved. The problem occurred due to Sales Lines using systems whose System No. was less than 4 characters long.



Order Entry/Sales Line Graphics

Drawing Dark coloured profiles with white borders on Sales line graphics was introduced in WM2012 R5.3. This is now changed to the original method of drawing since this was causing problems when profiles were thin, e.g. beads.

Order Entry/Reports

1867109 - The problem with the Multiline Production Note not getting printed on the Batch level Production Document is now fixed.

General/Miscellaneous

1866839 - Windowmaker forms and dialogs now appear correctly on screens with various high resolutions and text magnification.

Stock/Records

The problem with Stock Offcuts not getting listed on the "Offcuts" pages of the Stock Input notebook is now resolved.

Setup/Rules

The problem with source records not getting removed when Systems were moved to new numbers is now fixed.